

# Transfection protocol of adherent 293F cells (96-well plate)

1. Preparation: Cells are seeded in plates at  $0.3 \times 10^6$  cells/mL and cultured with 5% CO<sub>2</sub> at 37°C for 18-24h before transfection.
2. Preparation of transfection mixture:
  - (1). Dilute 0.2µg DNA into DMEM medium without serum(25µL in total) and homogenize gently.
  - (2). Dilute 0.5µL Sinofection into DMEM medium without serum(25µL in total) and homogenize gently and incubate at room temperature for 5 min.
  - (3). Mix the DNA and Sinofection at room temperature for 15~20min.
3. Remove the culture medium and add 50µL mixture per well.
4. After 4-6hours, remove the transfection mixture and add DMEM medium with 10%FBS.
5. Gene expression is tested after incubation with 5% CO<sub>2</sub> at 37°C for 48-72h.

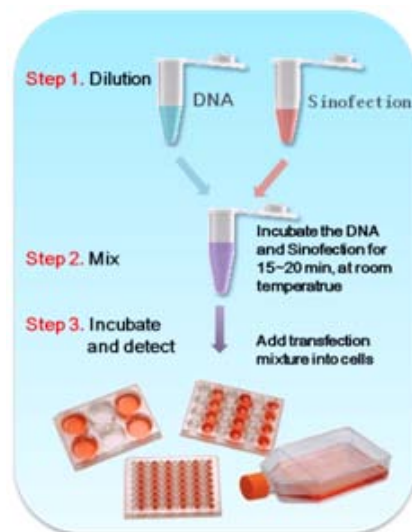
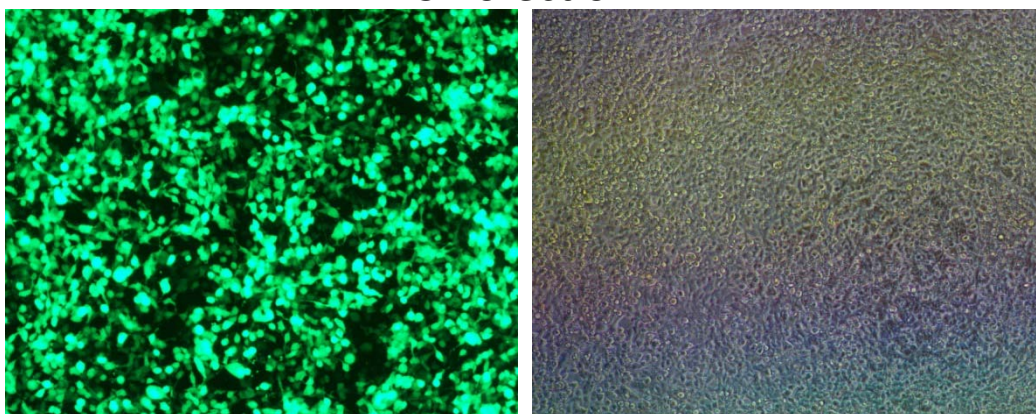
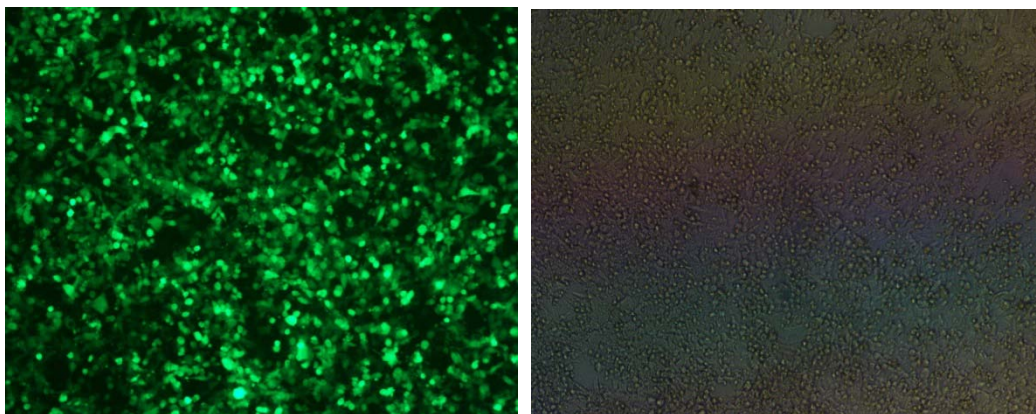


Fig. 1 Adherent cells' Transfection

## Sinofection



## L2K



Microscopy comparison of 293F cells transfected with L2K and Sinofection respectively