

Sino Biological Inc.

GENE | PROTEIN | ANTIBODY | ELISA Kit

Established in 2007, Sino Biological is a global biotechnology company manufacturing high quality research reagents for basic, translational, and clinical research. Sino Biological laboratories consist of over 80,000 square meters, producing cDNAs, recombinant proteins, antibodies and antibody-based kits that are used to study cellular function and human diseases.

Sino Biological scientists are experienced in recombinant protein expression and purification from bacterial, yeast, insect and mammalian system. The scientists have also developed technologies to produce and purify a comprehensive collection of mouse monoclonal antibodies, rabbit polyclonal antibodies, and rabbit monoclonal antibodies. Sino Biological offers integrated service from gene cloning to protein expression, protein purification, and immunization for polyclonal or monoclonal antibody generation. We have provided CRO services to produce targets proteins, antibodies, and optimized ELISA tools to meet the needs of the biopharmaceutical industry, including the top 10 pharmaceutical companies.

Sino Biological product sales are supported through a network of distributors in North American, European and Asian markets. We are proud that our products are helping scientists to solve significant problems in life science research. Every product has to pass rigorous QC test standards to ensure consistent high quality. We validate our product application and guarantee its performance as specified. We are developing tools and technologies to provide the global scientific community with the best-in-class product to accelerate scientific discovery and innovation.

CONTENTS

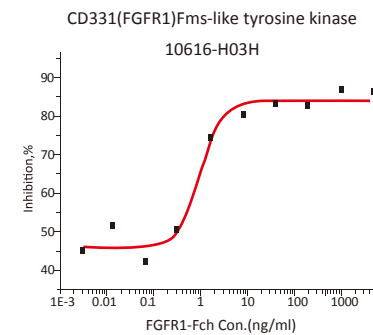
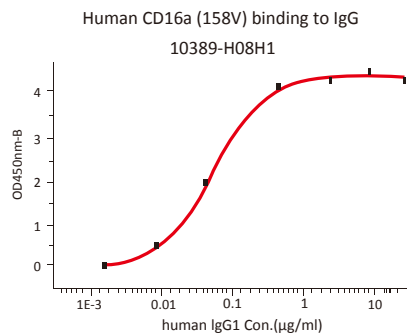
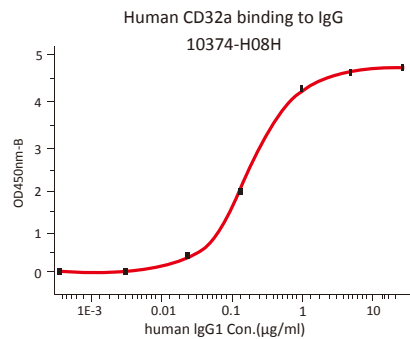
CONTENTS

Advantages	2
Product list	4
ELISA Kit product	14
Hot drug target	15

02 | Advantages

Sino Biological CD Antigen

- High biological activity
- Hot drug target
- All in stock, ship in 24 hours
- Multiple applications
- Proteins with high purity
- Multi-tissue validated
- High affinity, high sensitivity
- Rabbit Mab & Mouse Mab



Order

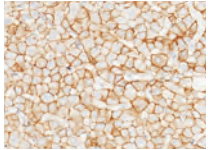
<http://www.sinobiological.com>

TEL: +86-400-890-9989

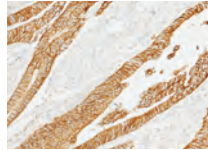
E-mail: order@sinobiological.com

Fax: +86-010-51029969

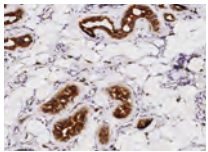
Multi-tissue validated



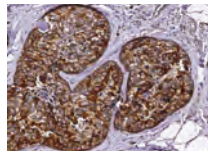
E-cadherin-pAb-1ug-IHC-P, Human Liver
Cat.No.10204-T58-100



E-cadherin-pAb-1ug-IHC-P, colon-carcinoma
Cat.No.10204-T58-100

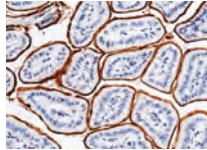


c-KIT-3ug-IHC-P, skin
Cat.No.11996-R351-100

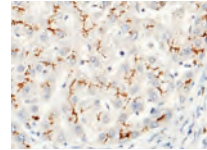


c-KIT-3ug-IHC-P, breast-cancer
Cat.No.11996-R351-100

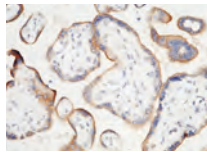
Rabbit MAB & Mouse MAB



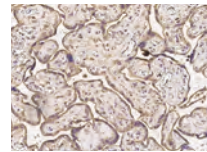
CEACAM1-5ug-intestine, Rabbit mAb
Cat.No.50571-R030-50



CEACAM1-15ug-liver, Mouse mAb
Cat.No.10822-MM02-50

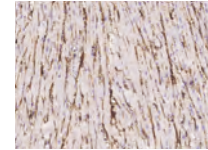


B7-H1-5ug-placenta, Rabbit mAb
Cat.No.10084-R015-50

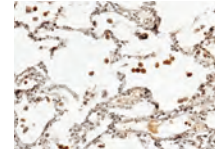


B7-H1-30ug-placenta, Mouse mAb
Cat.No.10084-MB55-100

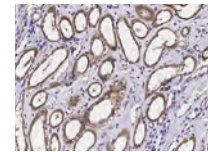
Examples of IHC application



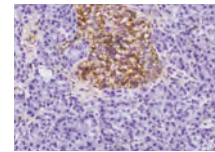
mCD34-0.2ug-heart
Cat.No.50589-T24-50



B7-1-1ug-lung
Cat.No.10698-T24-100

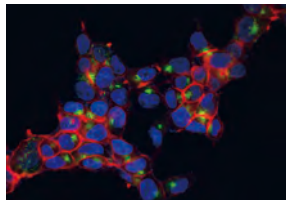


VEGFR2-1ug-kidney
Cat.No.10012-T24-100

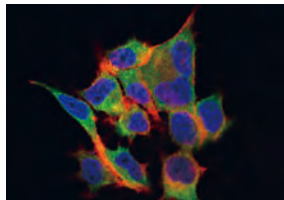


ANXA6-0.2ug-pancreas
Cat.No.100742-T40-100

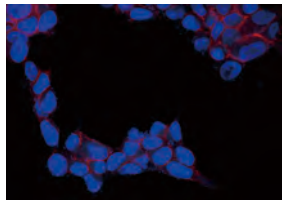
Examples of IP application



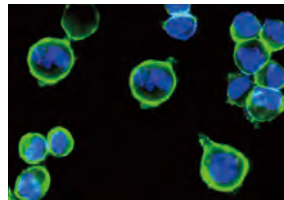
target-cell:LAMP1-MCF7
Cat.No.11215-MM07



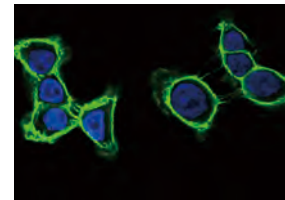
target-cell:GCSFR-MCF7
Cat.No.10218-MM03



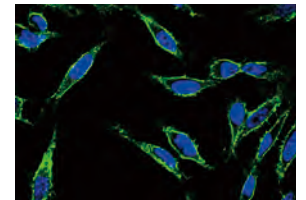
target-cell:E-CAD-P-MCF7
Cat.No.10204-MM08



target-cell:CD340-SKBR3
Cat.No.10004-R511



target-cell:CD321-A431
Cat.No.10198-MM04



target-cell:CD9-Hela
Cat.No.11029-MM01

Order

<http://www.sinobiological.com>

TEL: +86-400-890-9989

E-mail: order@sinobiological.com

Fax: +86-010-51029969

04 | Product list(CD1-28)

Name	Alias	human protein	anti-human antibody	mouse protein	anti-mouse antibody	rat protein	anti-rat antibody
CD1b	T6	+					
CD1c	R7, CD1, CD1A, BDCA1		WB				
CD1d	R3G1	+		+			
CD2	T11, LFA-2, SRBC-R, Erythrocyte receptor, LFA-3R	+(A)	ELISA, FCM, IHC-P, WB	+	ELISA, IHC-P, WB	+	
CD3d	T3D, IMD19, CD3-DELTA	+	ELISA, IHC-P, IP, WB	+	WB		
CD3e	T3E, TCRE, CD3 epsilon	+	ELISA, FCM, Func/A, IHC-P, IP, WB			+	
CD3G	T3G, IMD17, CD3-GAMMA		WB				
CD4	T4	+(A)	ELISA, FCM, IHC-P, WB	+(A)	ELISA, IHC-P, WB	+(A)	
CD5	T1, Tp67, LEU1	+(A)	ELISA, FCM, IHC-P, IP, WB	+	ELISA, FCM, ICC/IF, IF, IHC-P, WB	+(A)	ELISA, FCM, IHC-P
CD6	T12, OX52, TP120	+(A)		+(A)	ELISA, FCM, ICC/IF, IF	+(A)	ELISA, FCM, IHC-P
CD7	LEU 9, GP40, TP41	+(A)	ELISA, IHC-P, IP, WB	+(A)	ELISA	+	
CD8a	T8, Leu-2, MAL, CD8 alpha	+(A)	ELISA, FCM, IHC-P, WB	+(A)	ELISA, FCM, ICC/IF, IF	+	
CD8b	CD8B1, P37	+	ELISA, IHC-P				
CD9	p24, MRP-1, 5H9 antigen, MIC3, TSPAN29, GIG2	+	FCM, ICC/IF, IF				
CD10	CALLA, NEP, gp100, Neprilysin, SFE, MME, EPN	+(A)	ELISA, FCM, ICC/IF, IF, IHC-P	+(A)	ELISA	+	
CD11a	LFA-1, LFA1A, ITGAL		IHC-P				
CD13	Aminopeptidase N, APN, ANPEP, PEPN	+(A)	ELISA, ICC/IF, IF, IHC-P, IP, WB	+(A)	ELISA, IHC-P		
CD14	LPS-R	+	ELISA, FCM, IHC-P	+	ELISA, FCM, ICC/IF, IF, WB	+	ELISA
CD15	LeX, FUT4, ELFT, FCT3A, FUTIV, SSEA-1, FUC-TIV		IHC-P		WB		
CD16a	FcyRIIIA, FCGR3A, FCG3, FCGR3, IGFR3		FCM	+(A)	ELISA, FCM, WB		
CD16b	FcyRIIIB, FCGR3B, FCG3, FCGR3, IGFR3	+(A)	ELISA, IHC-P, WB				
CD19	B4, Leu-12	+	ELISA, FCM, IHC-P, IP	+(A)			
CD20	B1, Bp35, MS4A1	+	ELISA, FCM, IHC-P, WB				
CD21	C3DR, CR2, EBV-R	+(A)	ELISA, FCM, IHC-P, IP, WB				
CD22	BL-CAM, Siglec-2, Leu-14	+	ELISA, FCM, ICC/IF, IF, IHC-P	+	ELISA, FCM, IP, WB	+	ELISA, IHC-P
CD23	FceRII, BLAST-2, FCER2, CLEC4J	+	ELISA, IHC-P, WB	+	ELISA, FCM, ICC/IF, IF	+	
CD24	BA-1, Nectadrin	+		+		+	
CD25	Tac, p55, IL2RA	+(A)	ELISA, FCM	+	ELISA, FCM		
CD26	DPP IV, DPP4, ADABP, ADCP2	+(A)	FCM	+	ELISA		
CD27	T14, TNFRSF 7, CD27L receptor	+(A)	ELISA, FCM, IHC-P	+(A)	ELISA, FCM, ICC/IF, IF, IHC-P		
CD28	TP44, T44	+(A)	ELISA, FCM, Func/A, WB	+(A)	ELISA, IHC-P, WB	+	ELISA

+ : proteins available; + (A) : active protein; func/A : functional, activating antibody; Reagents for other species are available, such as Canine, Cynomolgus, Ferret and Rhesus. Gene reagents are also available.

Order

<http://www.sinobiological.com>

TEL: +86-400-890-9989

E-mail: order@sinobiological.com

Fax: +86-010-51029969

Product list(CD29-54) | 05

Name	Alias	human protein	anti-human antibody	mouse protein	anti-mouse antibody	rat protein	anti-rat antibody
CD29	Integrin β 1, ITGB1, FNBR	+	ICC/IF, IF, IHC-P, IP, WB				
CD30	Ki-1, TNFRSF8	+(A)	ELISA, FCM, IHC-P, IP, WB		IHC-P		
CD31	PECAM-1	+(A)	ELISA, FCM, ICC/IF, IF, IHC-P, IP, WB	+	ELISA, IHC-P		
CD32	FCG2, FCGR2A1, FCGR2			+(A)	ELISA		
CD32a	FcyRII, FCGR2A, Fc gamma RIIA	+(A)	ELISA, IHC-P, WB			+	
CD32b	FcyRII, FCGR2B, Fc gamma RIIb	+(A)	ELISA, FCM, IHC-P, IP, WB			+(A)	ELISA, IHC-P, WB
CD33	p67, Siglec-3	+	ELISA, FCM	+	ELISA		
CD34		+(A)	ELISA	+(A)	ELISA, FCM, IHC-P, IP, WB	+	
CD35	CR1, C3b/C4b receptor		IHC-P				
CD36	GPIV, GP3B, GP4, SCARB3	+(A)	ELISA, FCM, IHC-P, WB	+(A)		+	ELISA, IHC-P, WB
CD37	TSPAN26, GP52-40		WB	+			
CD38	T10, ADPRC1, ADP ribosyl cyclase 1	+	ELISA, IHC-P, IP, WB	+	ELISA, FCM, IHC-P	+	ELISA
CD39	NTPDase 1, ENTPD1	+		+(A)	ELISA		
CD40	TNFRSF5	+(A)	ELISA, FCM, ICC/IF, IF, IP, WB	+(A)		+	ELISA, FCM
CD42c	GPIIb, GPIBB	+				+	
CD43	Leukosialin, sialophorin, SPN		IP	+		+	
CD44	H-CAM, Pgp-1, Epican, HUTCH-I, LHR, ECMR-III	+	ELISA, FCM, ICC/IF, IF, IHC-P, IP, WB				
CD45	LCA, T200, B220, PTPRC	+(A)	ELISA, FCM, IHC-P	+(A)	ELISA		
CD46	MCP, TLX	+	ELISA, FCM, ICC/IF, IF, IHC-P, IP, WB				
CD47	IAP, MER6	+(A)	ELISA	+		+(A)	ELISA, WB
CD48	Blast-1, BCM1	+(A)	ELISA, FCM, IP, WB	+(A)	ELISA, FCM, ICC/IF, IF	+	ELISA, FCM, IHC-P, IP, WB
CD49b	VLA-2, ITGA2		WB				
CD49c	VLA-3, ITGA3		IHC-P				
CD49f	VLA-6, ITGA6		IHC-P				
CD50	ICAM-3		ELISA, FCM, IHC-P, IP, WB				
CD51	Vitronectin receptor, ITGAV, MSK8		IHC-P, WB				
CD52	CAMPATH-1, HE5, CDW52	+		+		+	
CD53	Tetraspanin-25, MOX44			+	ELISA, IP, WB		
CD54	ICAM-1	+(A)	ELISA, FCM, ICC/IF, IF, IHC-P, IP, WB	+(A)	ELISA, FCM, IHC-P	+(A)	ELISA, FCM, ICC/IF, IF, IHC-P, IP, WB

+ : proteins available; + (A) : active protein; func/A : functional, activating antibody; Reagents for other species are available, such as Canine, Cynomolgus, Ferret and Rhesus. Gene reagents are also available.

Order

<http://www.sinobiological.com>

TEL: +86-400-890-9989

E-mail: order@sinobiological.com

Fax: +86-010-51029969

06 | Product list(CD55-81)

Name	Alias	human protein	anti-human antibody	mouse protein	anti-mouse antibody	rat protein	anti-rat antibody
CD55	DAF	+(A)	ELISA, FCM, ICC/IF, IF, IHC-P, IP, WB	+	ELISA, FCM, ICC/IF, IF	+	
CD56	NCAM1	+	ELISA, IP, WB			+	
CD57	B3GAT1, GLCATP, GLCUATP, HNK1, LEU7, NK-1, NK1		WB				
CD58	LFA-3	+(A)	ELISA, FCM				
CD59	Protectin, MAC- inhibitor	+	ELISA, FCM, IP, WB			+	ELISA, FCM
CD59a				+	ELISA, IHC-P		
CD61	GPIIIa, ITGB3, GP3A		IHC-P		WB		
CD62E	E-selectin, ELAM-1, SELE	+(A)	ELISA, FCM, ICC/IF, IF, WB	+(A)	ELISA	+(A)	ELISA
CD62L	L-selectin, LECAM-1, SELL	+(A)	ELISA, FCM	+(A)	ELISA, FCM, ICC/IF, IF, IHC-P		IHC-P, WB
CD62P	P-selectin, PADGEM, SELP, LECAM3	+(A)	ELISA	+(A)	ELISA	+(A)	ELISA
CD63	LIMP, LAMP-3, MLA1	+	ELISA, FCM, IHC-P	+		+	ELISA
CD64	FcyRI, FCGR1, FCGR1A	+(A)	ELISA, FCM, WB	+(A)	ELISA, FCM, ICC/IF, IF, IHC-P, WB	+(A)	ELISA, FCM
CD66a	BGP-1, NCA-160, CEACAM1	+(A)	ELISA, FCM, ICC/IF, IF, IHC-P, WB	+	ELISA, FCM, ICC/IF, IF, IHC-P	+	ELISA, IHC-P
CD66b	CD67, CGM6, CEACAM8	+(A)	ELISA, FCM				
CD66c	NCA, CEACAM6	+(A)	ELISA, FCM, ICC/IF, IF, WB				
CD66d	CGM1, CEACAM3	+	ELISA, FCM				
CD66e	CEA, CEACAM5	+	ELISA, FCM, IHC-P, WB				
CD66f	PSG1, Sp-1, PSBG1	+	ELISA				
CD68	Macrosialin, gp110, KP1	+	ELISA, IHC-P			+	ELISA, IHC-P
CD69	AIM, CLEC2C, EA1	+	ELISA, IP, WB	+	ELISA		
CD70	Ki-24, CD27L, TNFSF7	+(A)		+	WB	+(A)	
CD71	T9, TFRC	+(A)	ELISA, FCM, ICC/IF, IF, IHC-P, IP, WB	+	ELISA	+	ELISA, IHC-P
CD72	Lyb-2, Ly-19, Ly-32						
CD73	5'-nucleotidase, NT5E	+(A)	ELISA, FCM, IHC-P, IP, WB	+(A)	ELISA	+(A)	ELISA
CD74	LN2, li, DHLAG	+(A)	ELISA, FCM, IHC-P, IP, WB				
CD75	ST6GAL1, Sialyltransferase 1	+	ELISA, IHC-P, IP, WB	+(A)			
CD77	Gb3, Pk blood group, BLA, A4GALT	+					
CD79a	MB1, IGA, Ig-alpha		IHC-P, WB	+			
CD79b	B29, IGB, Ig-beta			+	ELISA	+	ELISA, IHC-P
CD80	B7, B7-1, BB1	+(A)	ELISA, FCM, IHC-P, WB	+(A)	ELISA	+	
CD81	TAPA-1, Tetraspanin-28	+	ELISA, FCM	+		+	

+ : proteins available; + (A) : active protein; func/A : functional, activating antibody; Reagents for other species are available, such as Canine, Cynomolgus, Ferret and Rhesus. Gene reagents are also available.

Order

<http://www.sinobiological.com>

TEL: +86-400-890-9989

E-mail: order@sinobiological.com

Fax: +86-010-51029969

Product list(CD82-113) | 07

Name	Alias	human protein	anti-human antibody	mouse protein	anti-mouse antibody	rat protein	anti-rat antibody
CD82	R2, KAI1, Tetraspanin-27	+	ELISA, IHC-P, IP, WB				
CD83	HB15	+	ELISA, IHC-P, WB	+	ELISA	+	ELISA, WB
CDw84	SLAMF5, A130013D22Rik	+	ELISA, IP, WB	+(A)	ELISA		
CD85a	LILRB3, ILT5, LIR3	+	ELISA, FCM	+	ELISA, ICC/IF, IF		
CD85c	LILRB5, LIR8	+	IHC-P				
CD85d	LILRB2, ILT4, LIR2, MIR10	+(A)	ELISA, FCM				
CD85e	LILRA3, ILT6, LIR4	+	ELISA				
CD85f	LILRA5, ILT11, LIR9	+	ELISA, WB			+	ELISA
CD85i	LILRA1, LIR6	+	IP, WB				
CD85j	LILRB1, ILT2, LIR1	+	ELISA, FCM				
CD86	B70, B7-2, CD28LG2	+(A)	ELISA, FCM	+(A)	ELISA, IP, WB	+(A)	ELISA
CD87	UPA-R, PLAUR, MO3	+(A)	ELISA, FCM, IP	+(A)	ELISA		IHC-P
CD89	FcαR, FCAR	+(A)	ELISA, FCM			+	ELISA
CD90	Thy-1	+	WB	+	ELISA, IHC-P	+	
CD91	LRP1, A2MR, APOER	+					
CD93	C1qR, C1QR1, MXRA4	+	ELISA, FCM			+	ELISA
CD95	Apo-1, FASLG, APTL, TNFRSF6	+(A)	ELISA, FCM	+(A)	ELISA, FCM, ICC/IF, IF	+(A)	ELISA, FCM
CD96	TACTILE	+(A)	ELISA	+(A)	ELISA, IHC-P, WB		
CD97	ADGRE5	+(A)	ELISA, FCM, ICC/IF, IF, IP, WB				
CD98	4F2hc, SLC3A2, MDU1	+	ELISA, IHC-P, IP, WB	+	ELISA, IHC-P, WB	+	
CD99	MIC2, E2			+		+	
CD100	Semaphorin 4D, SEMA4D	+(A)	ELISA, FCM, WB	+(A)	ELISA, FCM, ICC/IF, IF	+	ELISA
CD102	ICAM-2	+(A)	ELISA, IHC-P, IP, WB	+(A)			
CD103	HUMINAE, ITGA1		ICC/IF, IF, WB				
CD105	Endoglin, ENG, END	+(A)	ELISA, FCM, ICC/IF, IF, IHC-P, WB	+(A)	ELISA, FCM, IHC-P, WB		
CD106	VCAM-1, L1CAM	+(A)	ELISA, WB	+(A)	ELISA		
CD107a	LAMP-1	+(A)	ELISA, FCM, ICC/IF, IF, IHC-P, IP, WB			+	
CD107b	LAMP-2	+	ELISA, ICC/IF, IF, IHC-P, IP, WB	+	ELISA, WB		
CD111	PVRL1, PRR1, Nectin-1, HVEC	+(A)	ELISA, FCM, WB			+	ELISA
CD112	PVRL2, PRR2, Nectin-2, HVEB	+(A)	ELISA, FCM, ICC/IF, IF, WB	+(A)	ELISA, IP, WB	+	ELISA, IHC-P
CD113	PVRL3, Nectin-3	+(A)	ELISA, IHC-P, WB				

+ : proteins available; + (A) : active protein; func/A : functional, activating antibody; Reagents for other species are available, such as Canine, Cynomolgus, Ferret and Rhesus. Gene reagents are also available.

Order

<http://www.sinobiological.com>

TEL: +86-400-890-9989

E-mail: order@sinobiological.com

Fax: +86-010-51029969

08 | Product list(CD114-146)

Name	Alias	human protein	anti-human antibody	mouse protein	anti-mouse antibody	rat protein	anti-rat antibody
CD114	GCSFR, CSF3R	+(A)	ELISA, FCM, ICC/IF, IF				
CD115	M-CSFR, c-fms, CSF1R	+(A)	ELISA, FCM, IHC-P	+(A)	ELISA	+(A)	ELISA
CD116	GM-CSFR α , CSF2RA, GM-CSFR	+(A)	ELISA, FCM				
CD117	c-kit, SCFR, KIT	+(A)	ELISA, FCM, IHC-P	+(A)	ELISA, IP, WB	+	
CD118	LIFR, gp190	+(A)	ELISA, IHC-P	+(A)	ELISA	+(A)	ELISA, WB
CD119	IFN γ R, IFNGR1	+(A)	ELISA, FCM, WB	+(A)	ELISA, FCM, ICC/IF, IF	+(A)	
CD120a	TNFR-I, TNFRSF1A, TNFR1	+(A)	ELISA, ICC/IF, IF, IHC-P, Neutralization, WB	+(A)	ELISA	+(A)	ELISA, WB
CD120b	TNFR-II, TNFRSF1B, TNFR2	+(A)	ELISA, Neutralization	+(A)	ELISA, FCM, IP, WB		
CD121a	IL-1R type I, IL1R1, IL1R1, IL-1 RI	+(A)	ELISA, IP, WB	+(A)	ELISA, FCM	+(A)	ELISA, FCM, WB
CD121b	IL-1R, type II, IL1R2, IL-1R2	+(A)	ELISA, WB	+(A)	ELISA	+(A)	ELISA
CD122	IL-2R β , IL-2RB	+(A)		+			
CD123	IL-3R, IL3RA	+(A)	ELISA, IP, WB	+			
CD124	IL4RA, IL4R	+(A)	ELISA, FCM, Neutralization, WB	+	ELISA	+(A)	ELISA
CD125	IL5RA, IL5R	+(A)		+	WB		
CD126	IL-6R, IL6R, gp80	+(A)	ELISA, FCM, ICC/IF, IF, Neutralization	+	ELISA, FCM, ICC/IF, IF, WB	+	ELISA, WB
CD127	IL-7R, IL7R	+(A)	ELISA, FCM, WB	+	ELISA, IP, WB	+(A)	ELISA
CD130	IL-6R β , gp130, IL6ST	+(A)	ELISA	+(A)	ELISA, IHC-P	+(A)	ELISA, FCM, WB
CD131	IL-3R common β , IL3RB, CSF2RB, IL5RB	+(A)	ELISA, FCM		IHC-P	+	
CD132	IL2RG, Common γ	+(A)	ELISA	+(A)	ELISA, FCM, ICC/IF, IF, WB	+	ELISA
CD134	OX-40, TNFRSF4	+(A)	ELISA, WB	+			
CD135	Flt3, Flk2	+(A)	ELISA, FCM, IP, WB	+			
CD136	MSP-R, RON, PTK8, MST1R	+	ELISA, IHC-P				
CD137	TNFRSF9, 4-1BB, CDw137, ILA	+(A)	ELISA	+(A)			
CD137L	4-1BB, TNFRSF9, ILA	+		+(A)	ELISA, FCM, ICC/IF, IF	+(A)	ELISA
CD138	Syndecan-1, SDC	+	ELISA, IHC-P, WB	+	ELISA, IHC-P	+(A)	ELISA
CD140a	PDGFR α , PDGFRA	+(A)	ELISA, FCM, IHC-P, WB			+	ELISA
CD140b	PDGFR β , PDGFRB	+(A)	ELISA, FCM, IHC-P			+(A)	
CD142	Tissue Factor, F3	+	ELISA, FCM, ICC/IF, IF, IP, WB	+(A)	ELISA, FCM, WB	+	ELISA
CD143	ACE1, DCP, DCP1, ICH, MVCD3				IHC-P		
CD144	VE-Cadherin, Cadherin-5	+(A)	ELISA, FCM, IHC-P	+	ELISA, FCM	+	ELISA, WB
CD146	MUC18, S-endo, MCAM	+(A)	ELISA, FCM, ICC/IF, IF, IHC-P, IP, WB	+	ELISA, IHC-P, IP, WB		

+ : proteins available; + (A) : active protein; func/A : functional, activating antibody; Reagents for other species are available, such as Canine, Cynomolgus, Ferret and Rhesus. Gene reagents are also available.

Order

<http://www.sinobiological.com>

TEL: +86-400-890-9989

E-mail: order@sinobiological.com

Fax: +86-010-51029969

Product list(CD147-178) | 09

Name	Alias	human protein	anti-human antibody	mouse protein	anti-mouse antibody	rat protein	anti-rat antibody
CD147	Neurothelin, basoglin, Basigin, BSG, EMMPRIN	+(A)	ELISA, FCM, ICC/IF, IF, IHC-P, IP, WB	+(A)	ELISA, ICC/IF, IF		
CD148	HPTP-eta, DEP1, PTPRJ	+	ELISA		IHC-P		
CD150	SLAM, SLAMF1, IPO-3	+(A)	ELISA, IHC-P, WB			+	ELISA
CD151	PETA-3, GP27, SFA-1,		IHC-P				
CD152	CTLA-4	+(A)	ELISA, WB	+(A)	ELISA, IP, WB	+	ELISA
CD153	CD30L, TNFSF8	+(A)				+(A)	
CD154	CD40L, CD40 Ligand, gp39, TRAP	+(A)	ELISA, WB	+(A)		+	
CD155	PVR, NECL-5	+(A)	ELISA, FCM, ICC/IF, IF, IP, WB	+(A)	ELISA, FCM, ICC/IF, IF	+(A)	ELISA
CD156a	ADAM8	+					
CD156b	ADAM17, ADAM18, CSVP, NISBD, NISBD1, TACE	+				+(A)	ELISA
CD156c	ADAM10	+					
CD157	BST-1	+	ELISA	+	ELISA, IP, WB	+	ELISA, IHC-P
CD158a	p58.1, KIR2DL1	+	ELISA, FCM				
CD158b2	NKAT-2, KIR2DL3	+	ELISA				
CD158d	KIR2DL4, KIR-103AS	+	ELISA				
CD158e	KIR3DL1		WB				
CD158z	KIR3DL3	+	IHC-P, WB				
CD159a	NKG2A, KLRC1, NKG2	+	ELISA	+	ELISA, WB		
CD160	BY55, NK1	+(A)	ELISA, FCM	+			
CD162	PSGL-1, SELPLG	+	ELISA, FCM, IHC-P, IP, WB	+	ELISA, IHC-P		
CD163	M130, MM130		IP, WB				
CD164	MGC-24, MUC-24	+	ELISA, FCM, IHC-P, IP, WB			+	ELISA
CD166	ALCAM	+(A)	ELISA, FCM, ICC/IF, IF	+(A)	ELISA, FCM, IHC-P	+(A)	ELISA, IHC-P, WB
CD167a	DDR1, MCK10	+(A)	ELISA, FCM, IP, WB	+(A)		+	
CD167b	DDR2	+(A)	ELISA	+(A)	ELISA, IHC-P	+(A)	
CD170	Siglec-5, CD33-like2, SIGLEC5, OB-BP2	+	ELISA, FCM				
CD171	NCAM-L1, L1CAM	+	ELISA, FCM, ICC/IF, IF, IHC-P				
CD172a	SIRP α , SHPS-1, SIRPA	+(A)	ELISA, FCM, IP, WB	+(A)	ELISA, FCM	+	ELISA, IHC-P, WB
CD172g	SIRP γ , SIRPB2	+(A)	ELISA				
CD177	NB1 glycoprotein, HNA-2a	+	ELISA, FCM				
CD178	FasL, CD95L, FASLG, Fas Ligand	+(A)	IP, WB	+			

+ : proteins available; + (A) : active protein; func/A : functional, activating antibody; Reagents for other species are available, such as Canine, Cynomolgus, Ferret and Rhesus. Gene reagents are also available.

Order

<http://www.sinobiological.com>

TEL: +86-400-890-9989

E-mail: order@sinobiological.com

Fax: +86-010-51029969

10 | Product list(CD179-227)

Name	Alias	human protein	anti-human antibody	mouse protein	anti-mouse antibody	rat protein	anti-rat antibody
CD179a	VPREB1, IGI, IGVPB, VPREB				WB		
CD179b	IGLL1		WB				
CD180	RP-105	+(A)		+(A)	ELISA, IHC-P, WB		
CD183	CXCR3		IHC-P, WB				
CD185	CXCR5, BLR1		WB				
CD186	CXCR6, BONZO, STRL33, TYMSTR		IP, WB				
CD191	CCR1, MIP-1 α R, RANTES-R		ICC/IF, IF, IHC-P, IP, WB		IHC-P		
CD192	CCR2, MCP-1-R		ICC/IF, IF, IP, WB				
CD196	CCR6, BN-1, CKR-L3, CKRL3, CMKBR6, DCR2, DRY6, GPR29, GPRCY4, STRL22		WB				
CD200	OX-2, OX2	+(A)	ELISA, FCM, IHC-P, WB	+(A)	ELISA, FCM		
CD201	EPC-R, PROCR	+	ELISA, IHC-P	+	ELISA	+	ELISA
CD202b	Tie2, Tek	+(A)	ELISA, FCM, ICC/IF, IF	+(A)	ELISA	+(A)	
CD204	Macrophage scavenger-R, MSR1	+	ELISA, WB	+	ELISA, FCM, ICC/IF, IF, IHC-P	+	
CD205	DEC-205, LY75	+	IHC-P				
CD207	Langerin		IP, WB				
CD208	DC-LAMP, LAMP3	+	ELISA, ICC/IF, IF, IHC-P, IP, WB				
CD209	DC-SIGN	+	ELISA, WB				
CD212	IL-12-R β 1, IL12RB1	+(A)	IP, WB				
CD213a1	IL-13-R α 1, IL13RA1	+(A)	ELISA, FCM, WB	+(A)	ELISA	+	
CD213a2	IL-13-R α 2, IL13RA2	+(A)	ELISA	+(A)	ELISA	+(A)	ELISA, IHC-P
CD215	IL15RA		WB				
CD217	IL-17R, IL17RA	+(A)	ELISA, Neutralization, WB	+(A)	ELISA	+(A)	ELISA
CD218a	IL-18R α , IL-1Rrp, IL18R1	+(A)	ELISA, FCM	+(A)	ELISA	+	
CD218b	IL-18R β , IL18RAP	+(A)	ELISA, IHC-P, WB	+(A)			
CD220	Insulin-R, Insulin Receptor, IINSR	+(A)	ELISA, IHC-P, WB				
CD221	IGF-1 R, IGF1R	+(A)	ELISA, FCM, ICC/IF, IF, WB				
CD223	LAG-3	+		+		+	
CD224	GGT1		IHC-P, WB		IHC-P	+	ELISA, IHC-P
CD225	IFITM1, Leu-13, DSPA2a		IHC-P, IP, WB				
CD226	DNAM-1, PTA-1, TLISA1	+(A)	ELISA	+(A)	ELISA, FCM	+(A)	ELISA
CD227	MUC1, EMA, PUM, Mucin 1	+	ELISA, IHC-P				

+ : proteins available; + (A) : active protein; func/A : functional, activating antibody; Reagents for other species are available, such as Canine, Cynomolgus, Ferret and Rhesus. Gene reagents are also available.

Order

<http://www.sinobiological.com>

TEL: +86-400-890-9989

E-mail: order@sinobiological.com

Fax: +86-010-51029969

Product list(CD228-273) | 11

Name	Alias	human protein	anti-human antibody	mouse protein	anti-mouse antibody	rat protein	anti-rat antibody
CD228	Melanotransferrin, MFI2			+	ELISA		
CD229	Ly-9, LY9, SLAMF3			+	ELISA, FCM, ICC/IF, IF		
CD230	Prion protein, PRNP	+					
CD231	TALLA-1, A15, Tspan-7,	+	ELISA	+	ELISA	+	
CD233	Band 3, SLC4A1		IHC-P				
CD235a	Glycophorin A, GYPA	+	IHC-P		IHC-P		
CD236	Glycophorin C/D, GYPC	+	ELISA				
CD238	Kell, KEL, Blood Group Kell		IHC-P, WB				
CD239	B-CAM, BCAM	+	ELISA, IHC-P, IP, WB	+(A)		+(A)	ELISA, IHC-P
CD242	ICAM-4	+					
CD244	2B4, NAIL	+(A)	ELISA, FCM, IP, WB				
CD247	TCRz, CD3-ZEETA	+	ELISA, IP, WB				
CD249	Aminopeptidase AM, EAP, ENPEP	+		+(A)	ELISA	+(A)	
CD252	OX40L, gp34	+	IHC-P				
CD253	TRAIL, Apo-2L, TL2, TNFSF10	+(A)	ELISA, IHC-P	+	ELISA, WB		
CD254	TNFSF11, RANKL, OPGL, ODF	+(A)	ELISA, IP, Neutralization, WB	+(A)			
CD256	APRIL, TALL-2, TRDL-1, TNFSF13		IHC-P, WB	+			
CD257	BlyS, BAFF, TALL-1, TNFSF13B	+(A)	ELISA, FCM, IP, WB				
CD258	LIGHT, HVEM-L, TNFRSF14	+		+			
CD261	TRAIL-R1, DR4, TNFRSF10A	+(A)	ELISA, FCM				
CD262	TRAIL-R2, DR5, TNFRSF10B	+(A)	ELISA, FCM	+(A)	ELISA		
CD264	DCR2, TRAIL-R4, TNFRSF10D	+(A)	ELISA, IHC-P, IP, WB				
CD265	RANK, TRANCE-R, ODFR, TNFRSF11A	+	ELISA, ICC/IF, IF, IP, WB			+	ELISA
CD266	TWEAK-R, FGF-inducible 14, TNFRSF12A	+(A)					
CD267	TACI, TNFR SF13B, TNFRSF13B	+	ELISA				
CD268	BAFFR, TR13C, TNFRSF13C			+(A)		+(A)	
CD269	BCMA, TNFRSF13B, TNFRSF17	+(A)	ELISA, IP, WB	+(A)		+	
CD270	HveA, TR2, TNFRSF14	+(A)	ELISA	+(A)			
CD271	NGFR, p75 (NTR)	+(A)	ELISA, IP, WB	+(A)	ELISA, WB		
CD272	BTLA	+		+(A)	WB	+(A)	
CD273	B7DC, PD-L2, PDCD1L2	+(A)	ELISA, FCM, WB	+(A)	ELISA	+(A)	

+ : proteins available; + (A) : active protein; func/A : functional, activating antibody; Reagents for other species are available, such as Canine, Cynomolgus, Ferret and Rhesus. Gene reagents are also available.

Order

<http://www.sinobiological.com>

TEL: +86-400-890-9989

E-mail: order@sinobiological.com

Fax: +86-010-51029969

12 | Product list(CD274-314)

Name	Alias	human protein	anti-human antibody	mouse protein	anti-mouse antibody	rat protein	anti-rat antibody
CD274	B7-H1, PD-L1	+(A)	ELISA, IHC-P, Neutralization	+(A)	ELISA, FCM, ICC/IF, IF	+(A)	
CD275	B7-H2, ICOSL, B7-RP1, GL50	+(A)	ELISA, FCM, WB	+(A)	ELISA	+	
CD276	B7-H3	+	ELISA, FCM, ICC/IF, IF, IP	+	ELISA, IP, WB	+	ELISA, IP, WB
CD277	BTN3A1, butyrophilin SF3 A1, BTF5	+					
CD278	ICOS, AILIM	+(A)		+		+	
CD279	PD1, SLEB2	+(A)	ELISA, IHC-P, Neutralization, WB	+(A)	ELISA, IHC-P	+(A)	
CD282	TLR2	+		+		+	
CD283	TLR3			+	ELISA		
CD284	TLR4	+	ELISA				
CD286	TLR6		IHC-P				
CD292	BMPR1A, ALK3, SKR5	+(A)	ELISA, IHC-P	+(A)	ELISA, IHC-P		
CD295	LeptinR, LEPR, OB-R, Leptin Receptor	+(A)	ELISA				
CD296	ART1, ARTC1				IHC-P		
CD297	ART4, dombrock blood group			+	ELISA, WB	+	ELISA, IHC-P, WB
CD298	ATP1B3, ATPB-3		WB		IHC-P, WB		
CD299	DC-SIGN-related, LSIGN, DC-SIGN2, CLEC4M, DC-SIGNR	+					
CD300a	CMRF35H, IRC1, IRp60M, CLM-8	+	ELISA, FCM	+			
CD300b	CLM-7, IREM3, LMIR5, CMRF35-A2	+					
CD300c	CMRF35A, LIR, CLM-6	+	ELISA, FCM				
CD300e	CMRF35L, CLM-2, CMRF35-A5	+	WB				
CD300f	CLM-1, IREM-1, LMIR3	+	WB				
CD300g	CLM-9, TREM4	+	ELISA, IP, WB			+	ELISA
CD301	MGL, HML, CLEC10A, MGL1	+		+	ELISA		
CD302	DCL1, BIMLEC			+	ELISA, IHC-P	+	
CD304	BDCA4, neuropilin 1, CLEC4C, NRP1	+(A)	ELISA, FCM, IHC-P				
CD305	LAIR1	+		+	ELISA, IHC-P		
CD306	LAIR2	+(A)	ELISA, FCM				
CD307a	FCRL1	+	ELISA	+	ELISA, IP, WB		
CD307b	FCRL2	+	ELISA, WB				
CD309	VEGFR2, KDR, FLK-1	+(A)	ELISA, IHC-P	+(A)	ELISA, FCM	+(A)	ELISA
CD314	NKG2D, KLRK1	+(A)	ELISA				

+ : proteins available; + (A) : active protein; func/A : functional, activating antibody; Reagents for other species are available, such as Canine, Cynomolgus, Ferret and Rhesus. Gene reagents are also available.

Order

<http://www.sinobiological.com>

TEL: +86-400-890-9989

E-mail: order@sinobiological.com

Fax: +86-010-51029969

Product list(CD315-362) | 13

Name	Alias	human protein	anti-human antibody	mouse protein	anti-mouse antibody	rat protein	anti-rat antibody
CD315	PTGFRN, CD9P-1, EWI-F, FPRP, SMAP-6		WB				
CD316	EWI2, PGRL, CD81P3, KASP, IGSF8, EWI-2, KCT-4	+	ELISA	+	ELISA		
CD317	BST2, HM1.24	+	ELISA, IHC-P, IP, WB	+			
CD318	CDCP1, SIMA135	+		+	ELISA, IHC-P		
CD319	CRACC, SLAMF7	+(A)	ELISA	+(A)	ELISA, FCM		
CD320	FDC-SM-8D6, TCbIR, 8D6 antigen			+(A)	ELISA	+	
CD321	JAM-A, JAM-1, PAM-1, F11R	+(A)	ELISA, FCM, ICC/IF, IF, IP, WB	+		+	
CD322	JAM-B, JAM-2, VE-JAM		IHC-P	+(A)	ELISA	+(A)	
CD324	E-Cadherin, Uvomorulin, CDH1, E-cad	+(A)	ELISA, FCM, ICC/IF, IF, IHC-P, IP, WB	+(A)	ELISA, IHC-P, IP, WB	+	ELISA, ICC/IF, IF, WB
CD325	N-Cadherin, NCAD, CDH2	+(A)	ELISA, FCM, ICC/IF, IF, WB	+		+	
CD326	Ep-CAM, Ly74, , EGP314, TROP-1, TACSTD1	+(A)	ELISA, FCM, ICC/IF, IF, IHC-P, IP, WB	+	ELISA, FCM, IHC-P, WB	+	ELISA, IHC-P
CD327	SIGLEC6, OB-BP1	+					
CD331	FGFR1, Fms-like tyrosine kinase-2, KAL2, N-SAM	+(A)	ELISA, IHC-P	+(A)	ELISA		
CD332	FGFR2, BEK, KGFR	+(A)	ELISA	+	ELISA		
CD333	FGFR3, ACH, CEK2	+	ELISA	+(A)	ELISA		
CD334	FGFR4, JTK2, TKF	+(A)	ELISA, IHC-P	+(A)	ELISA	+(A)	ELISA, IHC-P
CD336	NKp44, Ly-95 homolog, NCR2	+					
CD337	NKp30, Ly117, NCR3	+	ELISA			+	ELISA
CD338	ABCG2, BCRP, Bcrp1, MXR	+					
CD339	Jagged-1, JAG1, JAGL1, hJ1	+(A)	FCM				
CD340	ERBB2, MLN 19	+(A)	ELISA, FCM, ICC/IF, IF, IHC-P, IP, WB	+	ELISA, WB	+	ELISA, IP, WB
CD344	Frizzled-4, Fz-4, FzD4	+				+	
CD350	Frizzled-10, Fz-10, FZD10	+		+			
CD352	NTB-A, SLAMF6, LY108	+(A)	ELISA, IHC-P	+(A)	ELISA		
CD353	SLAMF8			+(A)	ELISA, IHC-P, WB		
CD354	TREM-1	+	ELISA				
CD355	CRTAM	+(A)	ELISA				
CD357	TNFRSF18, GITR	+	ELISA			+	
CD358	TNFRSF21	+(A)	ELISA, WB	+(A)	ELISA		
CD360	IL-21R	+(A)	ELISA	+	ELISA	+(A)	ELISA
CD362	Syndecan-2, HSPG, SDC2	+				+	IHC-P

+ : proteins available; + (A) : active protein; func/A : functional, activating antibody; Reagents for other species are available, such as Canine, Cynomolgus, Ferret and Rhesus. Gene reagents are also available.

Order

<http://www.sinobiological.com>

TEL: +86-400-890-9989

E-mail: order@sinobiological.com

Fax: +86-010-51029969

14 | ELISA Kit product

Name	Product Name	Application	Catalog NO.	Name	Product Name	Application	Catalog NO.
CD6	Mouse CD6 ELISA Kit	ELISA	KIT50711	CD120a	Human TNFR1 ELISA Kit	ELISA	KIT10872
CD21	Human CD21 ELISA Kit	ELISA	KIT10811	CD120a	Mouse TNFR1 ELISA Kit	ELISA	KIT50496
CD28	Human CD28 ELISA Kit	ELISA	KIT11524	CD120b	Mouse TNFR2 ELISA Kit	ELISA	KIT50128
CD30	Human TNFRSF8 ELISA Kit	ELISA	KIT10777	CD121a	Rat IL-1R1 ELISA Kit	ELISA	KIT80028
CD31	Human PECAM-1 ELISA Kit	ELISA	KIT10148	CD121b	Human IL-1R2 ELISA Kit	ELISA	KIT10111
CD38	Human CD38 ELISA Kit	ELISA	KIT10818	CD121b	Rat IL-1R2 ELISA Kit	ELISA	KIT80196
CD40	Human TNFRSF5 ELISA Kit	ELISA	KIT10774	CD124	Human IL-4R ELISA Kit	ELISA	KIT10402
CD48	Human SLAMF2 ELISA Kit	ELISA	KIT10797	CD126	Mouse IL6R ELISA Kit	ELISA	KIT50280
CD48	Mouse SLAMF2 ELISA Kit	ELISA	KIT50415	CD130	Mouse gp130 ELISA Kit	ELISA	KIT50135
CD54	Human ICAM-1 ELISA Kit	ELISA	KIT10346	CD132	Mouse IL2RG ELISA Kit	ELISA	KIT50087
CD55	Human DAF ELISA Kit	ELISA	KIT10101	CD146	Human MCAM ELISA Kit	ELISA	KIT10115
CD62E	Rat E-Selectin ELISA Kit	ELISA	KIT80033	CD147	Human EMMPRIN ELISA Kit	ELISA	KIT10186
CD62L	Human L-Selectin ELISA Kit	ELISA	KIT11838	CD150	Human SLAMF1 ELISA Kit	ELISA	KIT10837
CD62L	Mouse L-Selectin ELISA Kit	ELISA	KIT50045	CD200	Human CD200 ELISA Kit	ELISA	KIT10886
CD62P	Human P Selectin ELISA Kit	ELISA	KIT13025	CD209	Human DC-SIGN ELISA Kit	ELISA	KIT10200
CD66c	Human CEACAM6 ELISA Kit	ELISA	KIT10823	CD218a	Human IL18R1 ELISA Kit	ELISA	KIT11102
CD82	Human KAI-1 ELISA Kit	ELISA	KIT12275	CD218a	Mouse IL18R1 ELISA Kit	ELISA	KIT50094
CD86	Human B7-2 ELISA Kit	ELISA	KIT10699	CD229	Mouse LY9 ELISA Kit	ELISA	KIT50504
CD86	Rat B7-2 ELISA Kit	ELISA	KIT80025	CD239	Human BCAM ELISA Kit	ELISA	KIT10238
CD87	Human PLAUR ELISA Kit	ELISA	KIT10925	CD276	Human B7-H3 ELISA Kit	ELISA	KIT11188
CD97	Human CD97 ELISA Kit	ELISA	KIT11280	CD306	Human LAIR2 ELISA Kit	ELISA	KIT10868
CD105	Human Endoglin ELISA Kit	ELISA	KIT10149	CD321	Human JAM-A ELISA Kit	ELISA	KIT10198
CD105	Mouse Endoglin ELISA Kit	ELISA	KIT50407	CD324	Human E-Cadherin ELISA Kit	ELISA	KIT10204
CD112	Human Nectin-2 ELISA Kit	ELISA	KIT10005	CD332	Human FGFR2 ELISA Kit	ELISA	KIT10824
CD115	Human CSF1R ELISA Kit	ELISA	KIT10161	CD340	Human HER2 ELISA Kit	ELISA	KIT10004
CD117	Human c-KIT ELISA Kit	ELISA	KIT11996	CD352	Human Ly108 ELISA Kit	ELISA	KIT11945

Order

<http://www.sinobiological.com>

TEL: +86-400-890-9989

E-mail: order@sinobiological.com

Fax: +86-010-51029969

Immunotherapy-B7 family

Ligand	Other name	Species	Function	Receptor	Other name	Species
B7.1	CD80	h, m, r, cy	Co-stimulation	CD28		h, m, r, cy
			Co-inhibition	CTLA-4	CD152	h, m, r, cy, ca
			Co-inhibition	B7-H1	PD-L1	h, m, r, cy, ca
B7.2	CD86	h, m, r, cy	Co-stimulation	CD28		h, m, r, cy
			Co-inhibition	CTLA-4	CD152	h, m, r, cy, ca
B7-H1	PD-L1	h, m, r, cy, ca	Co-inhibition	PD-1	PDCD1	h, m, r, cy, ca
			Co-inhibition	B7.1	CD80	h, m, r, cy
B7-H2	ICOSL	h, m, r, cy	Co-stimulation	ICOS	CD278	h, m, r
			Co-stimulation	CD28		h, m, r, cy
B7-H3	CD276	h, m, r, cy		Unknown		
B7-H4	VTCN1	h, m, r		Unknown		
B7-H5	VISTA	h, m, r, rh	Co-stimulation	CD28H	TMIGD2	h
B7-H6	NCR3LG1	h, r, cy	Co-stimulation	NKp30		h, r, cy
B7-H7	HHLA2	coming soon	Co-stimulation	CD28H	TMIGD2	h
B7-DC	PD-L2	h, m, r, cy	Co-inhibition	PD-1	PDCD1	h, m, r, cy, ca

*h: human; m: mouse; r: rat; cy: cynomolgus monkey; rh: rhesus monkey; ca: canine

Immunotherapy-Fc receptor

ligand subtype	Name	Other name	Species	Biotinylated Protein	ligand subtype	Name	Other name	Species	Biotinylated Protein
IgG	FCGR1	CD64	h, m, r	√	IgA	FCAR	CD89	h, r	
	FCGR2A	CD32a	h, cy	√		IgE	FCER1A		h, m
	FCGR2B	CD32b	h, m, r, cy	√	FCER2		CD23	h, m, r	
	FCGR3A	CD16a	h, m (CD16), r	√					
	FCGR3B	CD16b	h, m (CD16-2)	√					
	FCGRT & B2M	FcRn	h, m, r, cy						

*h: human; m: mouse; r: rat; cy: cynomolgus monkey

16 | Drug target

Immunotherapy-TNF superfamily

Receptor	Other name	Species	Ligand	Other name	Species
TNFRSF7	CD27	h, m, cy	TNFSF7	CD70	h, r
TNFRSF5	CD40	h, m, r, cy, ca	TNFSF5	CD40LG	h, m, r, cy, ca
TNFRSF9	CD137	h, m, ca	TNFSF9	CD137L	h, m, r
TNFRSF4	OX40	h, m	TNFSF4	OX40L	h, cy
TNFRSF13C	BAFFR	m, r	TNFSF13B	BAFF	h, cy, ca

*h: human; m: mouse; r: rat; cy: cynomolgus monkey; ca: canine

Other hot drug target

Name	Species	Activity	Name	Species	Activity
CD20	h	√	LAG3	h, m, r	
DPP4	h, m, cy	√	NGF	h, m	√
ERBB2	h, m, r, cy, rh, ca	√	PCSK9	h, m, r, rh	√
ERBB3	h, m, r, rh	√	VEGFA	h, m, r, ca	√
HGF	h, m, r, cy, ca	√	VEGFR1	h, r	√
IL17A	h, m, ca, ma	√	VEGFR2	h, m, r	√
IL23	h, m, r, ma	√	IGFBP3	h, cy	√
IL6R	h, m, r, ca	√	BTLA	h, m, r, cy	√
LOXL2	h, m	√	TIM3	h, m, cy	

*h: human; m: mouse; r: rat; cy: cynomolgus monkey; rh: rhesus monkey; ca: canine; ma: marmoset monkey



Quality Assurance



Bulk in Stock

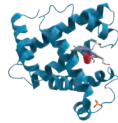


Order Online

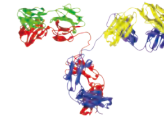


Technical Support

40,000 Research Reagents



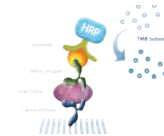
Protein (5,000+)



Antibody (8,000+)

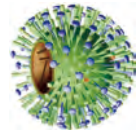


Gene (25,000+)

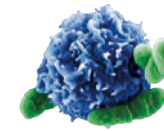


ELISA Kit (500+)

Reagents for hot research areas



Influenza (2,500+)



Cytokine &
Receptor (5,000+)



Drug Target (6,000+)



Secondary & Tag
Antibody