

EGFR / HER1 / ErbB1 Antibody (PE), Mouse MAb



Sino Biological
Biological Solution Specialist

Catalog Number: 10001-MM08T-P

GENERAL INFORMATION

Immunogen:	Recombinant Human EGFR / HER1 / ErbB1 protein (Catalog#10001-H08H)
Reagents:	PE-conjugated Mouse monoclonal antibody
Preparation	This product is a recombinant monoclonal antibody expressed from HEK293 cells. Then conjugated with PE under optimum conditions, the unreacted PE was removed.
Ig Type:	Mouse IgG1
Clone ID:	08
Specificity:	Human EGFR / HER1 / ErbB1
Concentration:	2 µl/Test, 0.1 mg/ml
Formulation:	PBS solution containing 0.5% BSA and 0.03%ProClin300
Storage:	This antibody can be stored at 2°C-8°C for twelve months without detectable loss of activity. Protected from prolonged exposure to light. Do not freeze !
Alternative Names:	EGFR

APPLICATIONS

Applications:	FCM
----------------------	-----

RECOMMENDED CONCENTRATION

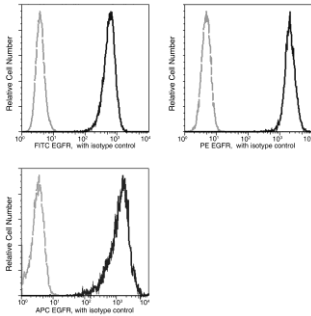
Please Note: Optimal concentrations/dilutions should be determined by the end user.

EGFR / HER1 / ErbB1 Antibody (PE), Mouse MAb



Sino Biological
Biological Solution Specialist

Catalog Number: 10001-MM08T-P



Flow cytometric analysis of EGFR expression
on human A431 cells.

Flow cytometry was performed on a BD
FACSCalibur flow cytometry system.
Please refer to www.sinobiological.com/Flow-Cytometry-FACS-Protocols-a-750.html for
technical protocols.