

EGFR / HER1 / ErbB1 Antibody, Mouse MAb



Sino Biological
Biological Solution Specialist

Catalog Number: 10001-MM08T

GENERAL INFORMATION	
Immunogen:	Recombinant Human EGFR / HER1 / ErbB1 protein (Catalog#10001-H08H)
Preparation	This product is a recombinant monoclonal antibody expressed from HEK293 cells.
Ig Type:	Mouse IgG1
Clone ID:	08
Specificity:	Human EGFR / HER1 / ErbB1 No cross-reactivity in ELISA with Human ErbB2 Human ErbB3 Human ErbB4
Formulation:	0.2 µm filtered solution in PBS
Storage:	This antibody can be stored at 2°C-8°C for one month without detectable loss of activity. Antibody products are stable for twelve months from date of receipt when stored at -20°C to -80°C. Preservative-Free. Avoid repeated freeze-thaw cycles.
Alternative Names:	ERBB,ERBB1,HER1,mENA,NISBD2,PIG61
APPLICATIONS	
Applications:	FCM,ICC/IF
RECOMMENDED CONCENTRATION	
ICC/IF	ICC/IF: 1:20-1:100
Flow Cytometry	FCM: 1:25-1:100

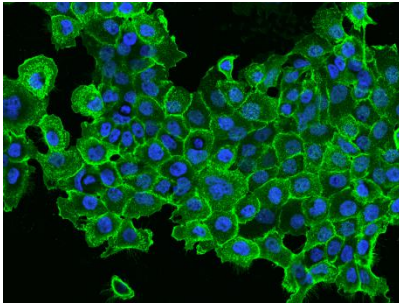
Please Note: Optimal concentrations/dilutions should be determined by the end user.

EGFR / HER1 / ErbB1 Antibody, Mouse MAb

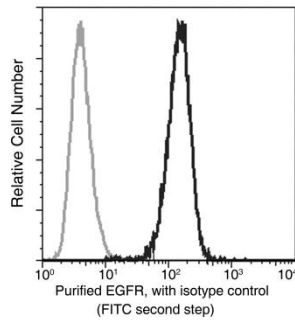


Sino Biological
Biological Solution Specialist

Catalog Number: 10001-MM08T



Immunofluorescence staining of EGFR in A431 cells. Cells were fixed with 4% PFA, blocked with 10% serum, and incubated with mouse anti-Human EGFR monoclonal antibody (dilution ratio 1:60) at 4°C overnight. Then cells were stained with the Alexa Fluor®488-conjugated Goat Anti-mouse IgG secondary antibody (green) and counterstained with DAPI (blue). Positive staining was localized to Cell membrane.



Flow cytometric analysis of Human EGFR expression on A431 cells. Cells were stained with purified anti-Human EGFR, then a FITC-conjugated second step antibody. The histogram were derived from gated events with the forward and side light-scatter characteristics of intact cells.

Flow cytometry was performed on a BD FACSCalibur flow cytometry system. Please refer to www.sinobiological.com/Flow-Cytometry-FACS-Protocols-a-750.html for technical protocols.