

**EGFR / HER1 / ErbB1 Antibody,
Rabbit MAb**

Catalog Number: 10001-R043

EliteRmab® is a registered trademark of Sino Biological Inc.

GENERAL INFORMATION	
Immunogen:	Recombinant Human EGFR / HER1 / ErbB1 protein (Catalog#10001-H08H)
Preparation	This antibody was obtained from a rabbit immunized with purified, recombinant Human EGFR / HER1 / ErbB1 (rh EGFR / HER1 / ErbB1; Catalog#10001-H08H; NP_005219; Met 1-Ser 645).
Ig Type:	Rabbit IgG
Clone ID:	043
Specificity:	Human EGFR / HER1 / ErbB1
	No cross-reactivity in ELISA with Human ErbB2 Human ErbB3
Formulation:	0.2 µm filtered solution in PBS
Storage:	This antibody can be stored at 2°C-8°C for one month without detectable loss of activity. Antibody products are stable for twelve months from date of receipt when stored at -20°C to -80°C. Preservative-Free. Sodium azide is recommended to avoid contamination (final concentration 0.05%-0.1%). It is toxic to cells and should be disposed of properly. Avoid repeated freeze-thaw cycles.
APPLICATIONS	
Applications:	ELISA, IHC-Fr, ICC/IF
RECOMMENDED CONCENTRATION	
IHC-Fr	IHC-Fr: 1:50-1:200
ICC/IF	ICC/IF: 1:20-1:100
ELISA	ELISA: 1:5000-1:10000 This antibody can be used at 1:5000-1:10000 with the appropriate secondary reagents to detect Human EGFR.

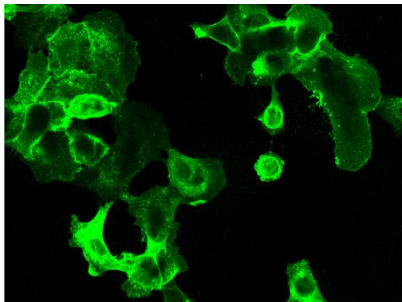
Please Note: Optimal concentrations/dilutions should be determined by the end user.

EGFR / HER1 / ErbB1 Antibody, Rabbit MAb

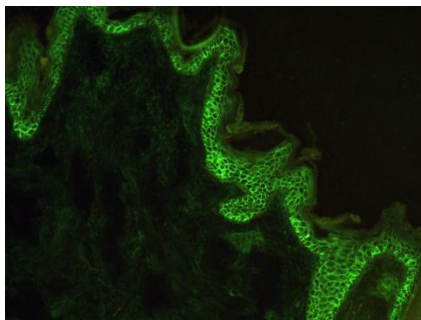


Catalog Number: 10001-R043

EliteRmab® is a registered trademark of Sino Biological Inc.



Immunofluorescence staining of EGFR in A431 cells. Cells were fixed with 4% PFA, blocked with 10% serum, and incubated with rabbit anti-human EGFR monoclonal antibody (dilution ratio 1:60) at 4°C overnight. Then cells were stained with the Alexa Fluor®488-conjugated Goat Anti-rabbit IgG secondary antibody (green). Positive staining was localized to Cytoplasm and Cell membrane.



Immunofluorescence staining of EGFR in monkey skin with rabbit monoclonal antibody (1:50, frozen section). The image showing membrane staining of squamous epithelium cell.