

# EGFR / HER1 / ErbB1 Antibody, Rabbit PAb, Antigen Affinity Purified



Sino Biological  
Biological Solution Specialist

Catalog Number: 10001-T24

GENERAL INFORMATION	
<b>Immunogen:</b>	Recombinant Human EGFR / HER1 / ErbB1 Protein (Catalog#10001-H20B2)
<b>Preparation</b>	Produced in rabbits immunized with purified, recombinant Human EGFR / HER1 / ErbB1 (rh EGFR / HER1 / ErbB1; Catalog#10001-H20B2; NP_005219; Met668-Ala1210). EGFR / HER1 / ErbB1 specific IgG was purified by Human EGFR / HER1 / ErbB1 affinity chromatography.
<b>Ig Type:</b>	Rabbit IgG
<b>Specificity:</b>	Human EGFR / HER1 / ErbB1
<b>Formulation:</b>	0.2 µm filtered solution in PBS
<b>Storage:</b>	This antibody can be stored at 2°C-8°C for one month without detectable loss of activity. Antibody products are stable for twelve months from date of receipt when stored at -20°C to -80°C. Preservative-Free. Sodium azide is recommended to avoid contamination (final concentration 0.05%-0.1%). It is toxic to cells and should be disposed of properly. Avoid repeated freeze-thaw cycles.
APPLICATIONS	
<b>Applications:</b>	ELISA, IHC-P
RECOMMENDED CONCENTRATION	
<b>IHC-P</b>	IHC-P: 1:500-1:2000
<b>ELISA</b>	ELISA: 1:5000-1:10000 This antibody can be used at 1:5000-1:10000 with the appropriate secondary reagents to detect Human EGFR / HER1 / ErbB1.

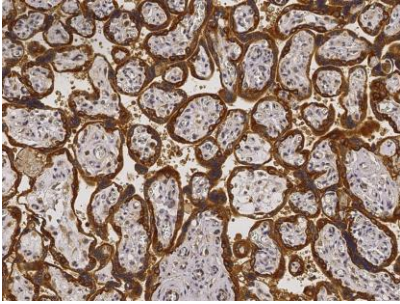
**Please Note: Optimal concentrations/dilutions should be determined by the end user.**

# EGFR / HER1 / ErbB1 Antibody, Rabbit PAb, Antigen Affinity Purified

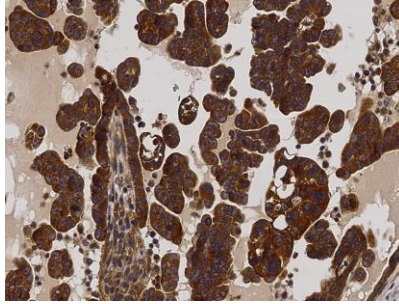


Sino Biological  
Biological Solution Specialist

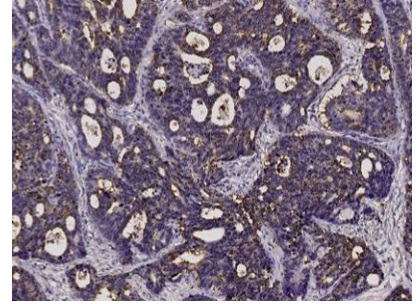
Catalog Number: 10001-T24



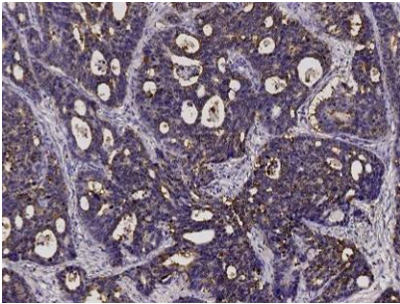
Immunohistochemical staining of human EGFR in human placenta with rabbit polyclonal antibody (1:1000, formalin-fixed paraffin embedded sections). Positive staining was localized to trophoblast.



Immunohistochemical staining of human EGFR in human ovarian cancer with rabbit polyclonal antibody (1:1000, formalin-fixed paraffin embedded sections).



Immunohistochemical staining of human EGFR in human colon carcinoma with rabbit polyclonal antibody (1:1000, formalin-fixed paraffin embedded sections).



Immunohistochemical staining of human EGFR in human colon carcinoma with rabbit polyclonal antibody (1:1000, formalin-fixed paraffin embedded sections).