

# EGFR Antibody, Rabbit PAb, Antigen Affinity Purified



Sino Biological  
Biological Solution Specialist

Catalog Number: 10001-T48

GENERAL INFORMATION	
<b>Immunogen:</b>	Recombinant Human EGFR Protein (Catalog#10001-H08B)
<b>Preparation</b>	Produced in rabbits immunized with purified, recombinant Human EGFR (rh EGFR; Catalog#10001-H08B; NP_005219; Met1-Lys642). EGFR specific IgG was purified by Human EGFR affinity chromatography.
<b>Ig Type:</b>	Rabbit IgG
<b>Specificity:</b>	Human EGFR
<b>Formulation:</b>	PBS, pH7.0 with 0.03% Proclin300
<b>Storage:</b>	This antibody can be stored at 2°C-8°C for one month without detectable loss of activity. Antibody products are stable for twelve months from date of receipt when stored at -20°C to -80°C. Avoid repeated freeze-thaw cycles.
APPLICATIONS	
<b>Applications:</b>	WB,ELISA
RECOMMENDED CONCENTRATION	
<b>Western Blot</b>	WB: 1:500-1:2000
<b>ELISA</b>	ELISA: 1:5000-1:10000 This antibody can be used at 1:5000-1:10000 with the appropriate secondary reagents to detect Human EGFR.

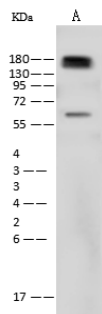
**Please Note: Optimal concentrations/dilutions should be determined by the end user.**

# EGFR Antibody, Rabbit PAb, Antigen Affinity Purified



Sino Biological  
Biological Solution Specialist

Catalog Number: 10001-T48



Anti-EGFR rabbit polyclonal antibody at 1:500 dilution

Lane A: HeLa Whole Cell Lysate

Lysates/proteins at 30  $\mu$ g per lane.

Secondary

Goat Anti-Rabbit IgG (H+L)/HRP at 1/10000 dilution.

Developed using the ECL technique.

Performed under reducing conditions.

Predicted band size:134 kDa