

MERS-CoV Spike Protein S2 Antibody, Rabbit PAb, Antigen Affinity Purified



Sino Biological
Biological Solution Specialist

Catalog Number: 100210-RP02

GENERAL INFORMATION

Immunogen:	A synthetic peptide corresponding to the S2 subunit of MERS-CoV (NCoV / Novel coronavirus) spike glycoprotein (S protein).
Preparation	Produced in rabbits immunized with purified, a synthetic peptide corresponding to the S2 subunit of MERS-CoV (NCoV / Novel coronavirus) spike glycoprotein (S protein), and purified by antigen affinity chromatography.
Ig Type:	Rabbit IgG
Specificity:	The antibody reacts with S2 subunit of MERS-CoV (NCoV / Novel coronavirus) Spike protein (S protein) and full-length S protein
Formulation:	0.2 µm filtered solution in PBS
Storage:	This antibody can be stored at 2°C-8°C for one month without detectable loss of activity. Antibody products are stable for twelve months from date of receipt when stored at -20°C to -80°C. Preservative-Free. Sodium azide is recommended to avoid contamination (final concentration 0.05%-0.1%). It is toxic to cells and should be disposed of properly. Avoid repeated freeze-thaw cycles.

APPLICATIONS

Applications:	WB
	IHC, FCM, IF, IP et al. applications haven't been validated. (Antibody's applications haven't been validated with corresponding virus positive samples. Optimal concentrations/dilutions should be determined by the end user.)

RECOMMENDED CONCENTRATION

Western Blot	WB: 1:500-1:2000
---------------------	------------------

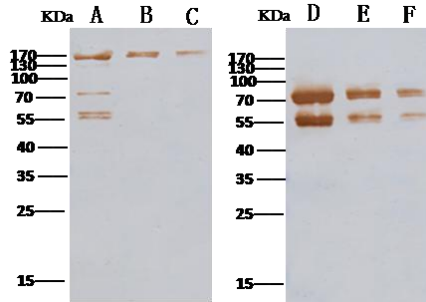
Please Note: Optimal concentrations/dilutions should be determined by the end user.

**MERS-CoV Spike Protein S2 Antibody,
Rabbit PAb, Antigen Affinity Purified**



Sino Biological
Biological Solution Specialist

Catalog Number: 100210-RP02



Anti-Novel coronavirus (HCoV-EMC/2012) Spike Protein S2 (aa 726-1296) rabbit polyclonal antibody at 1:500 dilution.

Sample: Novel coronavirus (HCoV-EMC/2012) Spike protein (ECD, aa 1-1297)

Lane A: 500ng

Lane B: 100ng

Lane C: 50ng

Sample: Novel coronavirus (HCoV-EMC/2012) Spike Protein S2 (aa 726-1296)

Lane D: 500ng

Lane E: 100ng

Lane F: 50ng

Secondary

Goat Anti- Rabbit IgG (H+L)/HRP at 0.4ug/ml dilution.

Performed under reducing conditions.