

# MERS-CoV Nucleocapsid Protein Antibody, Rabbit PAb, Antigen Affinity Purified



Sino Biological  
Biological Solution Specialist

Catalog Number: 100213-RP02

## GENERAL INFORMATION

<b>Immunogen:</b>	A synthetic peptide corresponding to the center region of MERS-CoV (NCoV / Novel coronavirus) Nucleocapsid Protein (NP protein).
<b>Preparation</b>	Produced in rabbits immunized with purified, a synthetic peptide corresponding to the center region of MERS-CoV (NCoV / Novel coronavirus) Nucleocapsid Protein (NP protein), and purified by antigen affinity chromatography.
<b>Ig Type:</b>	Rabbit IgG
<b>Specificity:</b>	The antibody reacts with MERS-CoV (NCoV / Novel coronavirus) Nucleocapsid protein (NP protein)
<b>Formulation:</b>	0.2 µm filtered solution in PBS
<b>Storage:</b>	This antibody can be stored at 2°C-8°C for one month without detectable loss of activity. Antibody products are stable for twelve months from date of receipt when stored at -20°C to -80°C. Preservative-Free. Sodium azide is recommended to avoid contamination (final concentration 0.05%-0.1%). It is toxic to cells and should be disposed of properly. Avoid repeated freeze-thaw cycles.

## APPLICATIONS

<b>Applications:</b>	WB
	IHC, FCM, IF, IP et al. applications haven't been validated. (Antibody's applications haven't been validated with corresponding virus positive samples. Optimal concentrations/dilutions should be determined by the end user.)

## RECOMMENDED CONCENTRATION

<b>Western Blot</b>	WB: 1:1000-1:5000
---------------------	-------------------

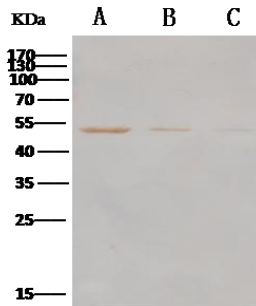
**Please Note: Optimal concentrations/dilutions should be determined by the end user.**

**MERS-CoV (NCoV / Novel coronavirus)  
Nucleocapsid Protein Antibody, Rabbit PAb,  
Antigen Affinity Purified**

Catalog Number: 100213-RP02



Sino Biological  
Biological Solution Specialist



Anti-Novel coronavirus (HCoV-EMC/2012)  
Nucleoprotein / NP rabbit polyclonal antibody  
at 1:1000 dilution.  
Sample: Novel coronavirus (HCoV-EMC/2012)  
Nucleoprotein / NP  
Lane A: 500ng  
Lane B: 200ng  
Lane C: 100ng  
Secondary  
Goat Anti- Rabbit IgG (H+L)/HRP at 0.4ug/ml  
dilution.

Performed under reducing conditions.