

Human PD-L1 / B7-H1 / CD274 Protein (ECD, mFc Tag)

Catalog Number: 10084-H05H



Sino Biological
Biological Solution Specialist

General Information

Gene Name Synonym:

B7-H; B7-H1; B7H1; PD-L1; PDCD1L1; PDCD1LG1; PDL1

Protein Construction:

A DNA sequence encoding the human CD274 (NP_054862.1) (Met1-Thr239) was expressed with the Fc region of mouse IgG1 at the C-terminus.

Source: Human

Expression Host: HEK293 Cells

QC Testing

Purity: > 95 % as determined by SDS-PAGE.

Bio Activity:

1. Measured by its binding ability in a functional ELISA. Immobilized recombinant Human PD1-His (Cat:10377-H08H) at 10 µg/ml (100 µl/well) can bind human PD-L1 (Cat:10084-H05H) with a linear range of 1.28-20 µg/ml.

2. Labeled biotin to PD-L1 Protein, Human, Recombinant (ECD, Fc Tag) by a certain molar ratio;

Using the Octet RED System, the affinity constant (Kd) of PD-L1 Protein, Human, Recombinant (ECD, Fc Tag), Biotinylated (Cat. 10084-H05H-B) bound to Atezolizumab was 0.1 nM.

Endotoxin:

< 1.0 EU per µg protein as determined by the LAL method.

Predicted N terminal: Phe 19

Molecular Mass:

The recombinant human CD274 consists of 455 amino acids and predicts a molecular mass of 51.7 kDa. As a result of glycosylation, the human CD274 migrates as an approximately 66 kDa protein in SDS-PAGE under reducing conditions.

Formulation:

Lyophilized from 20 mM Tris, 150 mM NaCl, 10 % Glycerol, pH 8.5.

Normally 5 % - 8 % trehalose, mannitol and 0.01% Tween80 are added as protectants before lyophilization. Specific concentrations are included in the hardcopy of COA. Please contact us for any concerns or special requirements.

Usage Guide

Stability & Storage:

Samples are stable for twelve months from date of receipt at -20°C to -80°C.

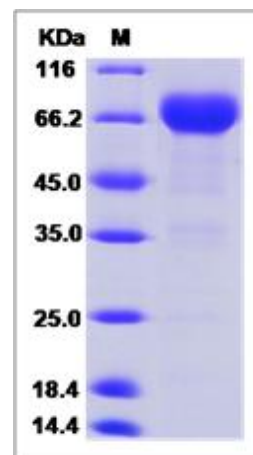
Store it under sterile conditions at -20°C to -80°C upon receiving. Recommend to aliquot the protein into smaller quantities for optimal storage.

Avoid repeated freeze-thaw cycles.

Reconstitution:

Detailed reconstitution instructions are sent along with the products.

SDS-PAGE:



Protein Description

Programmed death-1 ligand-1 (PD-L1, CD274, B7-H1) has been identified as the ligand for the immunoinhibitory receptor programmed death-1(PD1/PDCD1) and has been demonstrated to play a role in the regulation of immune responses and peripheral tolerance. PD-L1/B7-H1 is a member of the growing B7 family of immune molecules and this protein contains one V-like and one C-like Ig domain within the extracellular domain, and together with PD-L2, are two ligands for PD1 which belongs to the CD28/CTLA4 family expressed on activated lymphoid cells. By binding to PD1 on activated T-cells and B-cells, PD-L1 may inhibit ongoing T-cell responses by inducing apoptosis and arresting cell-cycle progression. Accordingly, it leads to growth of immunogenic tumor growth by increasing apoptosis of antigen specific T cells and may contribute to immune evasion by cancers. PD-L1 thus is regarded as promising therapeutic target for human autoimmune disease and malignant cancers.

References

- 1.Iwai Y, et al. (2002) Involvement of PD-L1 on tumor cells in the escape from host immune system and tumor immunotherapy by PD-L1 blockade. Proc Natl Acad Sci U S A. 99(19): 12293-7.
- 2.Ghebeh H, et al. (2006) The B7-H1 (PD-L1) T lymphocyte-inhibitory molecule is expressed in breast cancer patients with infiltrating ductal carcinoma: correlation with important high-risk prognostic factors. Neoplasia. 8(3): 190-8.
- 3.Salih HR, et al. (2006) The role of leukemia-derived B7-H1 (PD-L1) in tumor-T-cell interactions in humans. Exp Hematol. 34(7): 888-94.