

CSF1R / MCSF Receptor / CD115 Antibody, Mouse MAb



Sino Biological
Biological Solution Specialist

Catalog Number: 10161-MM04

GENERAL INFORMATION

Immunogen:	Recombinant Human CSF1R / MCSF Receptor / CD115 Protein (Catalog#10161-H08H)
Preparation	This antibody was produced from a hybridoma resulting from the fusion of a mouse myeloma with B cells obtained from a mouse immunized with purified, recombinant Human CSF1R / MCSF Receptor / CD115 (rh CSF1R / MCSF Receptor / CD115; Catalog#10161-H08H; NP_005202.2; Met1-Glu512). The IgG fraction of the cell culture supernatant was purified by Protein A affinity chromatography.
Ig Type:	Mouse IgG1
Clone ID:	04
Specificity:	Human CSF1R / MCSF Receptor / CD115
Formulation:	0.2 µm filtered solution in PBS
Storage:	This antibody can be stored at 2°C-8°C for one month without detectable loss of activity. Antibody products are stable for twelve months from date of receipt when stored at -20°C to -80°C. Preservative-Free. Sodium azide is recommended to avoid contamination (final concentration 0.05%-0.1%). It is toxic to cells and should be disposed of properly. Avoid repeated freeze-thaw cycles.

APPLICATIONS

Applications:	FCM
----------------------	-----

RECOMMENDED CONCENTRATION

Flow Cytometry	FCM: 1:25-1:100
-----------------------	-----------------

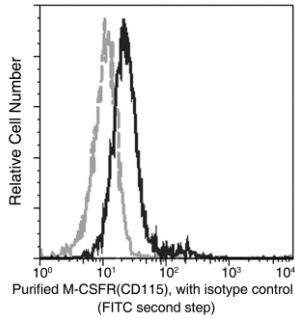
Please Note: Optimal concentrations/dilutions should be determined by the end user.

CSF1R / MCSF Receptor / CD115 Antibody, Mouse MAb



Sino Biological
Biological Solution Specialist

Catalog Number: 10161-MM04



Flow cytometric analysis of Human M-CSFR(CD115) expression on human whole blood monocytes. Cells were stained with purified anti-Human M-CSFR(CD115), then a FITC-conjugated second step antibody. The fluorescence histograms were derived from gated events with the forward and side light-scatter characteristics of viable monocytes.

Flow cytometry was performed on a BD FACSCalibur flow cytometry system. Please refer to www.sinobiological.com/Flow-Cytometry-FACS-Protocols-a-750.html for technical protocols.