

**MCSF Receptor/CSF1R/CD115  
Antibody, Rabbit PAb, Antigen  
Affinity Purified**

Catalog Number: 10161-T24



Sino Biological  
Biological Solution Specialist

**GENERAL INFORMATION**

<b>Immunogen:</b>	Recombinant Human MCSF Receptor/CSF1R/CD115 Protein (Catalog#10161-H08H)
<b>Preparation</b>	Produced in rabbits immunized with purified, recombinant Human MCSF Receptor/CSF1R/CD115 (rh MCSF Receptor/CSF1R/CD115; Catalog#10161-H08H; NP_005202.2; Met1-Glu512). MCSF Receptor/CSF1R/CD115 specific IgG was purified by Human MCSF Receptor/CSF1R/CD115 affinity chromatography.
<b>Ig Type:</b>	Rabbit IgG
<b>Specificity:</b>	Human MCSF Receptor/CSF1R/CD115
<b>Formulation:</b>	0.2 µm filtered solution in PBS
<b>Storage:</b>	This antibody can be stored at 2°C-8°C for one month without detectable loss of activity. Antibody products are stable for twelve months from date of receipt when stored at -20°C to -80°C. Preservative-Free. Sodium azide is recommended to avoid contamination (final concentration 0.05%-0.1%). It is toxic to cells and should be disposed of properly. Avoid repeated freeze-thaw cycles.

**APPLICATIONS**

<b>Applications:</b>	ELISA,IHC-P
----------------------	-------------

**RECOMMENDED CONCENTRATION**

<b>IHC-P</b>	IHC-P: 1:500-1:2000
<b>ELISA</b>	ELISA: 1:5000-1:10000 This antibody can be used at 1:5000-1:10000 with the appropriate secondary reagents to detect Human MCSF Receptor/CSF1R/CD115.

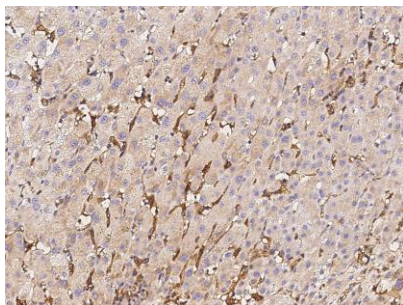
**Please Note: Optimal concentrations/dilutions should be determined by the end user.**

**MCSF Receptor/CSF1R/CD115  
Antibody, Rabbit PAb, Antigen  
Affinity Purified**

Catalog Number: 10161-T24



Sino Biological  
Biological Solution Specialist



Immunohistochemical staining of human MCSFR in human liver with rabbit polyclonal antibody (1:1000, formalin-fixed paraffin embedded sections).