

CD50 / ICAM-3 Antibody, Mouse MAb



Sino Biological
Biological Solution Specialist

Catalog Number: 10333-MM02

GENERAL INFORMATION

Immunogen:	10333-H08H
Preparation	This antibody was produced from a hybridoma resulting from the fusion of a mouse myeloma with B cells obtained from a mouse immunized with purified, recombinant Human CD50 / ICAM-3 (rh CD50 / ICAM-3; Catalog#10333-H08H; CAA49369.1; Met1-His485). The IgG fraction of the cell culture supernatant was purified by Protein A affinity chromatography.
Ig Type:	Mouse IgG2a
Clone ID:	02
Specificity:	Human CD50 / ICAM-3
Formulation:	0.2 µm filtered solution in PBS
Storage:	This antibody can be stored at 2°C-8°C for one month without detectable loss of activity. Antibody products are stable for twelve months from date of receipt when stored at -20°C to -80°C. Avoid repeated freeze-thaw cycles.
Alternative Names:	CD50

APPLICATIONS

Applications:	ELISA(Cap),FCM
----------------------	----------------

RECOMMENDED CONCENTRATION

Flow Cytometry	FCM: 1:25-1:100
Sandwich ELISA (Capture Ab)	ELISA(Cap): 1:250-1:2000 This antibody will detect Human ICAM-3 / CD50 in ELISA pair set (Catalog: # SEK10333). In a sandwich ELISA, it can be used as capture antibody.

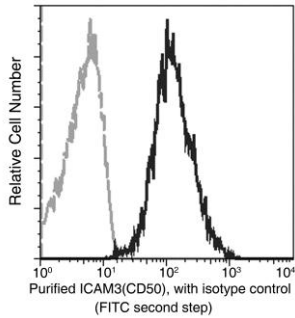
Please Note: Optimal concentrations/dilutions should be determined by the end user.

CD50 / ICAM-3 Antibody, Mouse MAb



Sino Biological
Biological Solution Specialist

Catalog Number: 10333-MM02



Flow cytometric analysis of human ICAM3(CD50) expression on human peripheral blood lymphocytes. Cells were stained with purified anti-Human ICAM3(CD50), then a FITC-conjugated second step antibody. The histogram were derived from events with the forward and side light-scatter characteristics of viable lymphocytes.

Flow cytometry was performed on a BD FACSCalibur flow cytometry system. Please refer to www.sinobiological.com/Flow-Cytometry-FACS-Protocols-a-750.html for technical protocols.