

**CD16/Fc gamma RIII Antibody (FITC),
Rabbit MAb**

Catalog Number: 10389-R221-F

EliteRmab® is a registered trademark of Sino Biological Inc.

GENERAL INFORMATION

Immunogen:	Recombinant Human CD16a/Fc gamma RIIIa Protein (Catalog#10389-H08H)
Reagents:	FITC-conjugated Rabbit monoclonal antibody
Preparation	This antibody was obtained from a rabbit immunized with purified, recombinant Human CD16a/Fc gamma RIIIa (rh CD16a/Fc gamma RIIIa; Catalog#10389-H08H; P08637-1; Met1-Gln208,176F) and conjugated with FITC under optimum conditions, the unreacted FITC was removed.
Ig Type:	Rabbit IgG
Clone ID:	221
Specificity:	Human CD16 (CD16a & CD16b)
Concentration:	10 µl/Test, 0.1 mg/ml
Formulation:	PBS solution containing 0.5% BSA and 0.03%ProClin300
Storage:	This antibody can be stored at 2°C-8°C for twelve months without detectable loss of activity. Protected from prolonged exposure to light. Do not freeze !
Alternative Names:	FCGR3

APPLICATIONS

Applications:	FCM
----------------------	-----

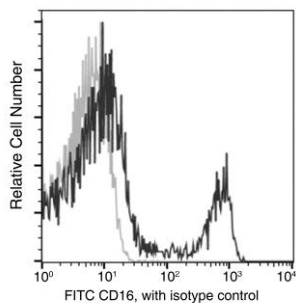
RECOMMENDED CONCENTRATION*Please Note: Optimal concentrations/dilutions should be determined by the end user.*

CD16/Fc gamma RIII Antibody (FITC), Rabbit MAb



Catalog Number: 10389-R221-F

EliteRmab® is a registered trademark of Sino Biological Inc.



Flow cytometric analysis of Human CD16 expression on human whole blood lymphocytes. Cells were stained with FITC-conjugated anti-Human CD16. The fluorescence histograms were derived from gated events with the forward and side light-scatter characteristics of viable lymphocytes.

Flow cytometry was performed on a BD FACSCalibur flow cytometry system. Please refer to www.sinobiological.com/Flow-Cytometry-FACS-Protocols-a-750.html for technical protocols.