

VE-Cadherin / CD144 / CDH5 Antibody, Mouse MAb



Sino Biological
Biological Solution Specialist

Catalog Number: 10433-MM01

GENERAL INFORMATION

Immunogen:	Recombinant Human VE-Cadherin / CD144 / CDH5 Protein
Preparation	This antibody was produced from a hybridoma resulting from the fusion of a mouse myeloma with B cells obtained from a mouse immunized with purified, recombinant Human VE-Cadherin / CD144 / CDH5 (rh VE-Cadherin / CD144 / CDH5; CAA56306.1; Met1-Gln593). The IgG fraction of the cell culture supernatant was purified by Protein A affinity chromatography.
Ig Type:	Mouse IgG1
Clone ID:	01
Specificity:	Human VE-Cadherin / CD144 / CDH5
Formulation:	0.2 µm filtered solution in PBS
Storage:	This antibody can be stored at 2°C-8°C for one month without detectable loss of activity. Antibody products are stable for twelve months from date of receipt when stored at -20°C to -80°C. Preservative-Free. Avoid repeated freeze-thaw cycles.
Alternative Names:	7B4,CD144

APPLICATIONS

Applications:	FCM,ICC/IF
----------------------	------------

RECOMMENDED CONCENTRATION

ICC/IF	ICC/IF: 1:10-1:50
Flow Cytometry	FCM: 1:25-1:100

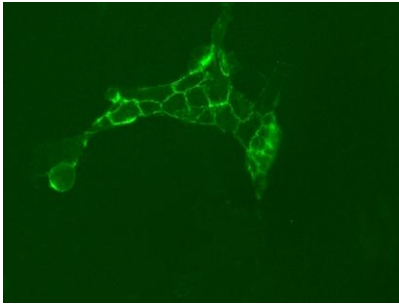
Please Note: Optimal concentrations/dilutions should be determined by the end user.

VE-Cadherin / CD144 / CDH5 Antibody, Mouse MAb

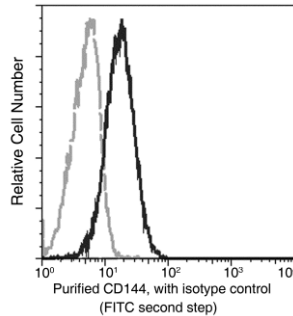


Sino Biological
Biological Solution Specialist

Catalog Number: 10433-MM01



Immunofluorescence staining of CDH5 in HUVEC cells. Cells were fixed with 4% PFA, blocked with 10% serum, and incubated with mouse anti-human CDH5 monoclonal antibody (dilution ratio 1:30) at 4°C overnight. Then cells were stained with the Alexa Fluor®488-conjugated Goat Anti-mouse IgG secondary antibody (green). Positive staining was localized to Cell membrane.



Flow cytometric analysis of Human CD144 expression on HUVEC cells. Cells were stained with purified anti-Human CD144, then a FITC-conjugated second step antibody. The fluorescence histograms were derived from gated events with the forward and side light-scatter characteristics of intact cells.

Flow cytometry was performed on a BD FACSCalibur flow cytometry system. Please refer to www.sinobiological.com/Flow-Cytometry-FACS-Protocols-a-750.html for technical protocols.