

VE-Cadherin / CD144 / CDH5 Antibody, Rabbit MAb



Catalog Number: 10433-R048

EliteRmab® is a registered trademark of Sino Biological Inc.

| GENERAL INFORMATION | |
|--------------------------------------|--|
| Immunogen: | Recombinant Human VE-Cadherin / CD144 / CDH5 Protein |
| Preparation | This antibody was obtained from a rabbit immunized with purified, recombinant Human VE-Cadherin / CD144 / CDH5 (CAA56306.1; Met1-Gln593). |
| Ig Type: | Rabbit IgG |
| Clone ID: | 048 |
| Specificity: | Human VE-Cadherin / CD144 / CDH5 |
| Formulation: | 0.2 µm filtered solution in PBS |
| Storage: | This antibody can be stored at 2°C-8°C for one month without detectable loss of activity. Antibody products are stable for twelve months from date of receipt when stored at -20°C to -80°C. Preservative-Free. Avoid repeated freeze-thaw cycles. |
| Alternative Names: | 7B4,CD144 |
| APPLICATIONS | |
| Applications: | ELISA,ELISA(Det),FCM,ICC/IF |
| RECOMMENDED CONCENTRATION | |
| ICC/IF | ICC/IF: 1:20-1:100 |
| Flow Cytometry | FCM: 1:25-1:100 |
| ELISA | ELISA: 1:5000-1:10000 This antibody can be used at 1:5000-1:10000 with the appropriate secondary reagents to detect Human VE-Cadherin / CD144 / CDH5. |
| Sandwich ELISA (Detection Ab) | ELISA(Det): 1:1000-1:10000 This antibody will detect Human VE-Cadherin / CD144 in ELISA pair set (Catalog: # SEK10433). In a sandwich ELISA, it can be used as detection antibody when paired with (Catalog: # 10433-MM04). |

Please Note: Optimal concentrations/dilutions should be determined by the end user.

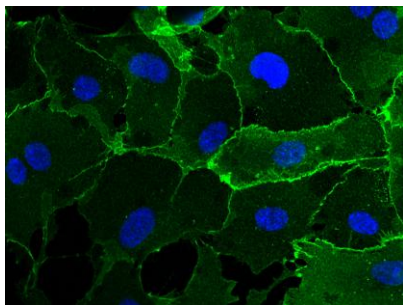
VE-Cadherin / CD144 / CDH5 Antibody, Rabbit MAb

Catalog Number: 10433-R048

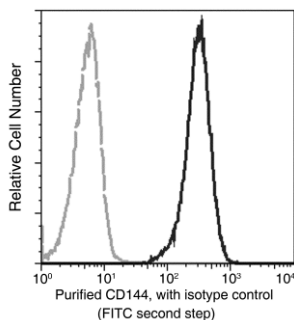


Sino Biological
Biological Solution Specialist

EliteRmab® is a registered trademark of Sino Biological Inc.



Immunofluorescence staining of CDH5 in HUVEC cells. Cells were fixed with 4% PFA, permeabilized with 0.3% Triton X-100 in PBS, blocked with 10% serum, and incubated with rabbit anti-human CDH5 monoclonal antibody (dilution ratio 1:60) at 4°C overnight. Then cells were stained with the Alexa Fluor® 488-conjugated Goat Anti-rabbit IgG secondary antibody (green) and counterstained with DAPI (blue).



Flow cytometric analysis of Human CD144 expression on HUVEC cells. Cells were stained with purified anti-Human CD144, then a FITC-conjugated second step antibody. The fluorescence histograms were derived from gated events with the forward and side light-scatter characteristics of intact cells.

Flow cytometry was performed on a BD FACSCalibur flow cytometry system. Please refer to www.sinobiological.com/Flow-Cytometry-FACS-Protocols-a-750.html for technical protocols.