

# TNF-alpha / TNFA / TNFSF2 Antibody, Rabbit MAb



Catalog Number: 10602-R101

EliteRmab® is a registered trademark of Sino Biological Inc.

GENERAL INFORMATION	
<b>Immunogen:</b>	Recombinant Human TNF-alpha / TNFA / TNFSF2 Protein (Catalog#10602-HNAE)
<b>Preparation</b>	This antibody was obtained from a rabbit immunized with purified, recombinant Human TNF-alpha / TNFA / TNFSF2 (rh TNF-alpha / TNFA / TNFSF2; Catalog#10602-HNAE; NP_000585.2; Val77-Leu233).
<b>Ig Type:</b>	Rabbit IgG
<b>Clone ID:</b>	101
<b>Specificity:</b>	Human TNF-alpha / TNFA / TNFSF2
<b>Formulation:</b>	0.2 µm filtered solution in PBS
<b>Storage:</b>	This antibody can be stored at 2°C-8°C for one month without detectable loss of activity. Antibody products are stable for twelve months from date of receipt when stored at -20°C to -80°C. Preservative-Free. Sodium azide is recommended to avoid contamination (final concentration 0.05%-0.1%). It is toxic to cells and should be disposed of properly. Avoid repeated freeze-thaw cycles.
APPLICATIONS	
<b>Applications:</b>	FCM
RECOMMENDED CONCENTRATION	
<b>Flow Cytometry</b>	FCM: 1:25-1:100

**Please Note: Optimal concentrations/dilutions should be determined by the end user.**

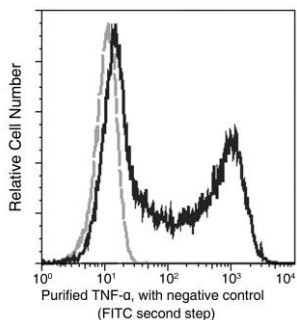
# TNF- $\alpha$ / TNFA / TNFSF2 Antibody, Rabbit MAb

Catalog Number: 10602-R101



Sino Biological  
Biological Solution Specialist

EliteRmab® is a registered trademark of Sino Biological Inc.



Flow cytometric analysis of Human TNF- $\alpha$  expression on human peripheral blood lymphocytes. Human peripheral blood mononuclear cells were stimulated for 4-6 hours with PMA and Ionomycin in the presence of GolgiPlug. The cells were treated according to manufacturer's manual (BD Pharmingen™ Cat. No. 554714), stained with purified anti-Human TNF- $\alpha$ , then a FITC-conjugated second step antibody. The fluorescence histograms were derived from gated events with the forward and side light-scatter characteristics of viable lymphocytes.

Flow cytometry was performed on a BD FACSCalibur flow cytometry system. Please refer to [www.sinobiological.com/Flow-Cytometry-FACS-Protocols-a-750.html](http://www.sinobiological.com/Flow-Cytometry-FACS-Protocols-a-750.html) for technical protocols.