

CD116 / GM-CSFR Antibody (PE), Mouse MAb



Sino Biological
Biological Solution Specialist

Catalog Number: 10701-MM03-P

GENERAL INFORMATION

Immunogen:	Recombinant Human CD116 / GM-CSFR protein (Catalog#10701-H08H)
Reagents:	PE-conjugated Mouse monoclonal antibody
Preparation	This antibody was produced from a hybridoma resulting from the fusion of a mouse myeloma with B cells obtained from a mouse immunized with purified, recombinant Human CD116 / GM-CSFR (rh CD116 / GM-CSFR; Catalog#10701-H08H; P15509-1; Met1-Gly320) and conjugated with PE under optimum conditions, the unreacted PE was removed.
Ig Type:	Mouse IgG1
Clone ID:	03
Specificity:	Human CD116 / GM-CSFR
Concentration:	5 µl/Test, 0.1 mg/ml
Formulation:	Aqueous solution containing 0.5% BSA and 0.09% sodium azide
Storage:	This antibody is stable for 12 months from date of receipt when stored at 2°C-8°C. Protected from prolonged exposure to light. Do not freeze! Sodium azide is toxic to cells and should be disposed of properly. Flush with large volumes of water during disposal.

APPLICATIONS

Applications:	FCM
----------------------	-----

RECOMMENDED CONCENTRATION

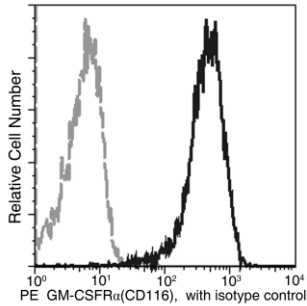
Please Note: Optimal concentrations/dilutions should be determined by the end user.

CD116 / GM-CSFR Antibody (PE), Mouse MAb



Sino Biological
Biological Solution Specialist

Catalog Number: 10701-MM03-P



Flow cytometric analysis of anti-human GM-CSFR α (CD116) on human whole blood monocytes. The fluorescence histograms were derived from events with the forward and side light-scatter characteristics of viable monocytes.

Flow cytometry was performed on a BD FACSCalibur flow cytometry system. Please refer to www.sinobiological.com/Flow-Cytometry-FACS-Protocols-a-750.html for technical protocols.