

CD116 / GM-CSFR Antibody, Mouse MAb



Sino Biological
Biological Solution Specialist

Catalog Number: 10701-MM03

GENERAL INFORMATION

| | |
|---------------------|---|
| Immunogen: | Recombinant Human CD116 / GM-CSFR Protein (Catalog#10701-H08H) |
| Preparation | This antibody was produced from a hybridoma resulting from the fusion of a mouse myeloma with B cells obtained from a mouse immunized with purified, recombinant Human CD116 / GM-CSFR (rh CD116 / GM-CSFR; Catalog#10701-H08H; P15509-1; Met1-Gly320). The IgG fraction of the cell culture supernatant was purified by Protein A affinity chromatography. |
| Ig Type: | Mouse IgG1 |
| Clone ID: | 03 |
| Specificity: | Human CD116 / GM-CSFR |
| Formulation: | 0.2 µm filtered solution in PBS |
| Storage: | This antibody can be stored at 2°C-8°C for one month without detectable loss of activity. Antibody products are stable for twelve months from date of receipt when stored at -20°C to -80°C. Preservative-Free. Sodium azide is recommended to avoid contamination (final concentration 0.05%-0.1%). It is toxic to cells and should be disposed of properly. Avoid repeated freeze-thaw cycles. |

APPLICATIONS

| | |
|----------------------|-----|
| Applications: | FCM |
|----------------------|-----|

RECOMMENDED CONCENTRATION

| | |
|-----------------------|-----------------|
| Flow Cytometry | FCM: 1:25-1:100 |
|-----------------------|-----------------|

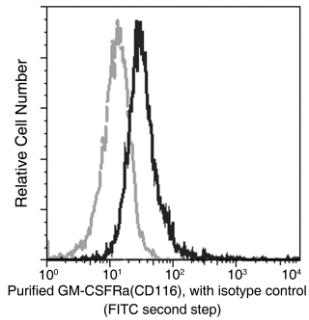
Please Note: Optimal concentrations/dilutions should be determined by the end user.

CD116 / GM-CSFR Antibody, Mouse MAb



Sino Biological
Biological Solution Specialist

Catalog Number: 10701-MM03



Flow cytometric analysis of Human GM-CSFRa(CD116) expression on human whole blood monocytes. Cells were stained with purified anti-Human GM-CSFRa(CD116), then a FITC-conjugated second step antibody. The fluorescence histograms were derived from gated events with the forward and side light-scatter characteristics of viable monocytes.

Flow cytometry was performed on a BD FACSCalibur flow cytometry system. Please refer to www.sinobiological.com/Flow-Cytometry-FACS-Protocols-a-750.html for technical protocols.