

**CD116 / GM-CSFR Antibody (APC),
Rabbit MAb**

Catalog Number: 10701-R009-A

EliteRmab® is a registered trademark of Sino Biological Inc.

GENERAL INFORMATION	
Immunogen:	Recombinant Human CD116 / GM-CSFR Protein (Catalog#10701-H08H)
Reagents:	APC-conjugated Rabbit monoclonal antibody
Preparation	This antibody was obtained from a rabbit immunized with purified, recombinant Human CD116 / GM-CSFR (rh CD116 / GM-CSFR; Catalog#10701-H08H; P15509-1; Met1-Gly320) and conjugated with APC under optimum conditions, the unreacted APC was removed.
Ig Type:	Rabbit IgG
Clone ID:	009
Specificity:	Human CD116 / GM-CSFR
Concentration:	10 µl/Test, 0.1 mg/ml
Formulation:	Aqueous solution containing 0.5% BSA and 0.09% sodium azide
Storage:	This antibody can be stored at 2°C-8°C for twelve months without detectable loss of activity. Protected from prolonged exposure to light. Do not freeze ! Sodium azide is toxic to cells and should be disposed of properly. Flush with large volumes of water during disposal.
Alternative Names:	CD116, CDw116, CSF2R, CSF2RAX, CSF2RAY, CSF2RX, CSF2RY, GM-CSF-R-alpha, GMCSFR, GMR, SMDP4
APPLICATIONS	
Applications:	FCM

Please Note: Optimal concentrations/dilutions should be determined by the end user.

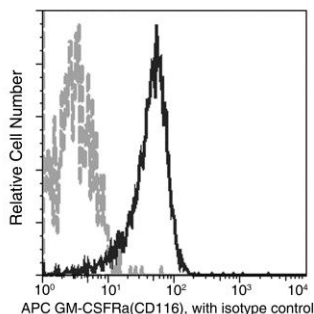
CD116 / GM-CSFR Antibody (APC), Rabbit MAb

Catalog Number: 10701-R009-A



Sino Biological
Biological Solution Specialist

EliteRmab® is a registered trademark of Sino Biological Inc.



Flow cytometric analysis of Human SIGLEC5(CD170) expression on human whole blood granulocytes. Cells were stained with APC-conjugated anti-Human SIGLEC5(CD170). The fluorescence histograms were derived from gated events with the forward and side light-scatter characteristics of viable granulocytes.

Flow cytometry was performed on a BD FACSCalibur flow cytometry system. Please refer to www.sinobiological.com/Flow-Cytometry-FACS-Protocols-a-750.html for technical protocols.