

**CD116 / GM-CSFR Antibody (FITC),
Rabbit MAb**

Catalog Number: 10701-R009-F

EliteRmab® is a registered trademark of Sino Biological Inc.

GENERAL INFORMATION

Immunogen:	Recombinant Human CD116 / GM-CSFR protein (Catalog#10701-H08H)
Reagents:	FITC-conjugated Rabbit monoclonal antibody
Preparation	This antibody was obtained from a rabbit immunized with purified, recombinant Human CD116 / GM-CSFR (rh CD116 / GM-CSFR; Catalog#10701-H08H; P15509-1; Met1-Gly320) and conjugated with FITC under optimum conditions, the unreacted FITC was removed.
Ig Type:	Rabbit IgG
Clone ID:	009
Specificity:	Human CD116 / GM-CSFR
Concentration:	10 µl/Test, 0.1 mg/ml
Formulation:	Aqueous solution containing 0.5% BSA and 0.09% sodium azide
Storage:	This antibody is stable for 12 months from date of receipt when stored at 2°C-8°C. Protected from prolonged exposure to light. Do not freeze! Sodium azide is toxic to cells and should be disposed of properly. Flush with large volumes of water during disposal.

APPLICATIONS

Applications:	FCM
----------------------	-----

RECOMMENDED CONCENTRATION*Please Note: Optimal concentrations/dilutions should be determined by the end user.*

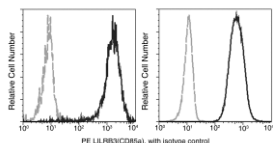
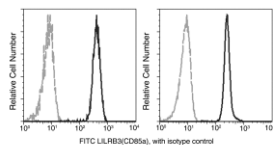
CD116 / GM-CSFR Antibody (FITC), Rabbit MAb

Catalog Number: 10701-R009-F



Sino Biological
Biological Solution Specialist

EliteRmab® is a registered trademark of Sino Biological Inc.



Flow cytometric analysis of anti-human GM-CSFR α (CD116) on human peripheral blood monocytes. The fluorescence histograms were derived from events with the forward and side light-scatter characteristics of viable monocytes.

Flow cytometry was performed on a BD FACSCalibur flow cytometry system. Please refer to www.sinobiological.com/Flow-Cytometry-FACS-Protocols-a-750.html for technical protocols.