

N-Cadherin / CD325 / CDH2 Antibody, Rabbit MAb



Catalog Number: 11039-R014

EliteRmab® is a registered trademark of Sino Biological Inc.

| GENERAL INFORMATION | |
|---------------------------|--|
| Immunogen: | Recombinant Human N-Cadherin / CD325 / CDH2 protein (Catalog#11039-H08H) |
| Preparation | This antibody was obtained from a rabbit immunized with purified, recombinant Human N-Cadherin / CD325 / CDH2 (rh N-Cadherin / CD325 / CDH2; Catalog#11039-H08H; NP_001783.2; Met 1-Ala 724). |
| Ig Type: | Rabbit IgG |
| Clone ID: | 014 |
| Specificity: | Human N-Cadherin / CD325 / CDH2 |
| Formulation: | 0.2 µm filtered solution in PBS |
| Storage: | This antibody can be stored at 2°C-8°C for one month without detectable loss of activity. Antibody products are stable for twelve months from date of receipt when stored at -20°C to -80°C. Preservative-Free. Avoid repeated freeze-thaw cycles. |
| Alternative Names: | CD325,CDHN,CDw325,NCAD |
| APPLICATIONS | |
| Applications: | ELISA,ICC/IF |
| RECOMMENDED CONCENTRATION | |
| ICC/IF | ICC/IF: 1:50-1:1000 |
| ELISA | ELISA: 1:5000-1:10000 This antibody can be used at 1:5000-1:10000 with the appropriate secondary reagents to detect Human CDH2. |

Please Note: Optimal concentrations/dilutions should be determined by the end user.

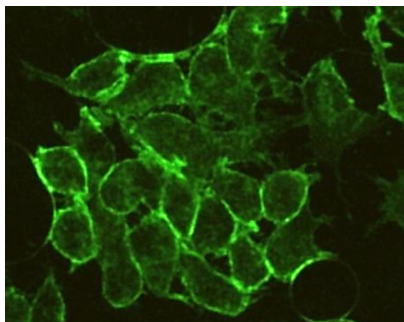
N-Cadherin / CD325 / CDH2 Antibody, Rabbit MAb

Catalog Number: 11039-R014



Sino Biological
Biological Solution Specialist

EliteRmab® is a registered trademark of Sino Biological Inc.



Immunofluorescence staining of human CDH2 in HeLa cells with rabbit monoclonal antibody (1:200). The image showing membrane staining of HeLa cells.