

# N-Cadherin / CD325 / CDH2 Antibody, Rabbit MAb



Catalog Number: 11039-R020

EliteRmab® is a registered trademark of Sino Biological Inc.

GENERAL INFORMATION	
<b>Immunogen:</b>	Recombinant Human N-Cadherin / CD325 / CDH2 Protein (Catalog#11039-H08H)
<b>Preparation</b>	This antibody was obtained from a rabbit immunized with purified, recombinant Human N-Cadherin / CD325 / CDH2 (rh N-Cadherin / CD325 / CDH2; Catalog#11039-H08H; NP_001783.2; Met 1-Ala 724).
<b>Ig Type:</b>	Rabbit IgG
<b>Clone ID:</b>	020
<b>Specificity:</b>	Human N-Cadherin / CD325 / CDH2
<b>Formulation:</b>	0.2 µm filtered solution in PBS
<b>Storage:</b>	This antibody can be stored at 2°C-8°C for one month without detectable loss of activity. Antibody products are stable for twelve months from date of receipt when stored at -20°C to -80°C. Preservative-Free. Avoid repeated freeze-thaw cycles.
<b>Alternative Names:</b>	CD325,CDHN,CDw325,NCAD
APPLICATIONS	
<b>Applications:</b>	WB,ELISA,FCM,ICC/IF
RECOMMENDED CONCENTRATION	
<b>ICC/IF</b>	ICC/IF: 1:20-1:100
<b>Flow Cytometry</b>	FCM: 1:25-1:100
<b>Western Blot</b>	WB: 1:500-1:2000
<b>ELISA</b>	ELISA: 1:5000-1:10000 This antibody can be used at 1:5000-1:10000 with the appropriate secondary reagents to detect Human CDH2.

**Please Note: Optimal concentrations/dilutions should be determined by the end user.**

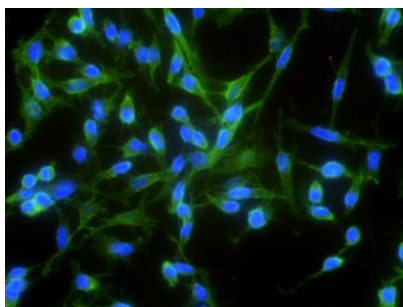
# N-Cadherin / CD325 / CDH2 Antibody, Rabbit MAb

Catalog Number: 11039-R020

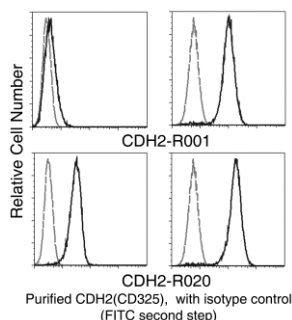


Sino Biological  
Biological Solution Specialist

EliteRmab® is a registered trademark of Sino Biological Inc.

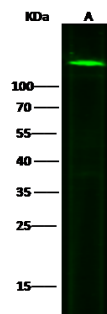


Immunofluorescence staining of Human CDH2 in HeLa cells. Cells were fixed with 4% PFA, blocked with 10% serum, and incubated with rabbit anti-Human CDH2 monoclonal antibody (1:60). Then cells were stained with the Alexa Fluor® 488-conjugated Goat Anti-rabbit IgG secondary antibody (green) and counterstained with DAPI (blue). Positive staining was localized to membrane.



Flow cytometry analysis of N-Cadherin on HeLa cells. HeLa cells were harvested with (Left) or without (Right) trypsinization [please note, the epitope is sensitive to trypsin] and stained with either purified Rabbit IgG isotype control (dashed line) or Rabbit Anti-Human CD325 antibody [solid line, and Clone R001 (upper), Clone R020 (bottom)] at matching concentrations, then a FITC-conjugated second step antibody.

Flow cytometry was performed on a BD FACSCalibur flow cytometry system. Please refer to [www.sinobiological.com/Flow-Cytometry-FACS-Protocols-a-750.html](http://www.sinobiological.com/Flow-Cytometry-FACS-Protocols-a-750.html) for technical protocols.



Anti-CDH2 rabbit monoclonal antibody at 1:500 dilution

Lane A: HeLa Whole Cell Lysate

Lysates/proteins at 30 µg per lane.

Secondary  
Goat Anti-Rabbit IgG H&L (Dylight800) at 1/10000 dilution.

Developed using the Odyssey technique.  
Performed under reducing conditions.

Predicted band size: 99 kDa  
Observed band size: 130 kDa