

Influenza A H1N1 (Swine Flu 2009) Hemagglutinin / HA Antibody, Mouse MAb

Catalog Number: 11055-MM08



Sino Biological
Biological Solution Specialist

GENERAL INFORMATION

Immunogen:	Recombinant H1N1 HA protein
Preparation	This antibody was produced from a hybridoma resulting from the fusion of a mouse myeloma with B cells obtained from a mouse immunized with purified, recombinant Influenza A virus H1N1 hemagglutinin (HA) extracellular domain. The IgG fraction of the cell culture supernatant was purified by Protein A affinity chromatography.
Ig Type:	Mouse IgG2b
Clone ID:	9G1G8
Specificity:	H1N1 (A/California/04/2009) HA H1N1 (A/California/07/2009) HA
	Has cross-reactivity in ELISA with H1N2 (A/swine/Guangxi/13/2006) HA H1N3 (A/duck/NZL/160/1976) HA H5N1 (A/Anhui/1/2005) HA H5N1 (A/Viet nam/1194/2004) HA H5N1 (A/Indonesia/5/2005) HA H5N1 (A/turkey/Turkey/1/2005) HA H5N1 (A/bar-headed goose/Qinghai/14/2008) HA No cross-reactivity in ELISA with H1N1 (A/Brisbane/59/2007) HA H1N1 (A/BrevigMission/1/1918) HA H1N1 (A/Solomon Islands/3/2006) HA H1N1 (A/Ohio/UR06-0091/2007) HA H1N1 (A/New Caledonia/20/1999) HA H1N1 (A/Puerto Rico/8/1934) HA H1N1 (A/WSN/1933) HA H3N2 (A/Brisbane/10/2007) HA Influenza B (B/Florida/4/2006) HA
Formulation:	0.2 µm filtered solution in PBS
Storage:	This antibody can be stored at 2°C-8°C for one month without detectable loss of activity. Antibody products are stable for twelve months from date of receipt when stored at -20°C to -80°C. Preservative-Free. Sodium azide is recommended to avoid contamination (final concentration 0.05%-0.1%). It is toxic to cells and should be disposed of properly. Avoid repeated freeze-thaw cycles.

APPLICATIONS

Applications:	WB, ELISA
	IHC, FCM, IF, IP et al. applications haven't been validated. (Antibody's applications haven't been validated with corresponding virus positive samples. Optimal concentrations/dilutions should be determined by the end user.)

RECOMMENDED CONCENTRATION

Flow Cytometry	FCM: 1:25-1:100
Western Blot	This antibody can be used at 1:500-1:1000 with the appropriate secondary reagents to detect H1N1 HA in WB.
ELISA	ELISA: 1:1000-1:2000 This antibody can be used at 1:1000-1:2000 with the appropriate secondary reagents to detect H1N1 HA.

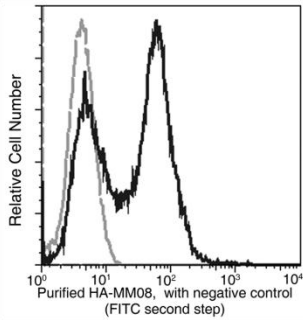
Please Note: Optimal concentrations/dilutions should be determined by the end user.

Influenza A H1N1 (Swine Flu 2009) Hemagglutinin / HA Antibody, Mouse MAb

Catalog Number: 11055-MM08



Sino Biological
Biological Solution Specialist



High Five cells were infected by Bac-HA, cells were collected at 48 hours postinfection, and the cell surface expression of HA were measured by flow cytometry. $10^{6.6}$ Cells were stained with 1 μ g Purified Mouse Anti-H1N1-HA (11055-MM08) antibody for 20 min on ice. Cells were washed twice and incubated with 1 μ g of a FITC Goat Anti-Mouse Ig secondary antibody for 20 min on ice. Cells were washed twice and analyzed by flow cytometry.

Flow cytometry was performed on a BD FACSCalibur flow cytometry system. Please refer to www.sinobiological.com/Flow-Cytometry-FACS-Protocols-a-750.html for technical protocols.