

**Influenza A H7N7 (A/Netherlands/219/2003)  
Hemagglutinin / HA Antibody, Rabbit PAb,  
Antigen Affinity Purified**

Catalog Number: 11082-T62



Sino Biological  
Biological Solution Specialist

#### GENERAL INFORMATION

<b>Immunogen:</b>	Recombinant Influenza A H7N7 (A/Netherlands/219/2003) Hemagglutinin / HA Protein (Catalog#11082-V08B)
<b>Preparation</b>	Produced in rabbits immunized with purified, recombinant Influenza A H7N7 (A/Netherlands/219/2003) Hemagglutinin / HA ( Catalog#11082-V08B; AAR02640.1; Met8-Phe544). Influenza A H7N7 (A/Netherlands/219/2003) Hemagglutinin / HA specific IgG was purified by Influenza A H7N7 (A/Netherlands/219/2003) Hemagglutinin / HA affinity chromatography.
<b>Ig Type:</b>	Rabbit IgG
<b>Specificity:</b>	Influenza A H7N7 (A/Netherlands/219/2003) Hemagglutinin / HA
<b>Formulation:</b>	0.2 µm filtered solution in PBS
<b>Storage:</b>	This antibody can be stored at 2°C-8°C for one month without detectable loss of activity. Antibody products are stable for twelve months from date of receipt when stored at -20°C to -80°C. Preservative-Free. Avoid repeated freeze-thaw cycles.
<b>Alternative Names:</b>	Hemagglutinin,HA

#### APPLICATIONS

<b>Applications:</b>	WB,ELISA
	IHC, FCM, IF, IP et al. applications haven't been validated. (Antibody's applications haven't been validated with corresponding virus positive samples. Optimal concentrations/dilutions should be determined by the end user.)

#### RECOMMENDED CONCENTRATION

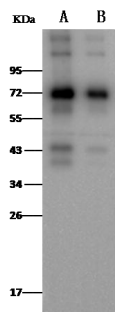
<b>Western Blot</b>	WB: 1:1000-1:5000
<b>ELISA</b>	ELISA: 1:5000-1:10000 This antibody can be used at 1:5000-1:10000 with the appropriate secondary reagents to detect Influenza A H7N7 (A/Netherlands/219/2003) Hemagglutinin / HA.

***Please Note: Optimal concentrations/dilutions should be determined by the end user.***

**Influenza A H7N7 (A/Netherlands/219/2003)  
Hemagglutinin / HA Antibody, Rabbit PAb,  
Antigen Affinity Purified**  
Catalog Number: 11082-T62



Sino Biological  
Biological Solution Specialist



Anti-Influenza A H7N7  
(A/Netherlands/219/2003) Hemagglutinin / HA  
Protein rabbit polyclonal antibody at 1:1000  
dilution.  
Sample: Influenza A H7N7  
(A/Netherlands/219/2003) Hemagglutinin / HA  
Recombinant Protein  
Lane A: 5ng  
Lane B: 1ng

Secondary  
Goat Anti-Rabbit IgG (H+L)/HRP at 1/10000  
dilution.

Developed using the ECL technique.  
Performed under reducing conditions.