

**Influenza A H1N1 (A/California/07/2009)  
Hemagglutinin / HA (DQ239-240 deletion)  
Antibody, Rabbit PAb, Antigen Affinity Purified**

Catalog Number: 11085-T62



Sino Biological  
Biological Solution Specialist

GENERAL INFORMATION	
<b>Immunogen:</b>	Recombinant Influenza H1N1 (A/California/07/2009) Hemagglutinin / HA Protein (Catalog#11085-V08H)
<b>Preparation</b>	Produced in rabbits immunized with purified, recombinant Influenza H1N1 (A/California/07/2009) Hemagglutinin / HA ( Catalog#11085-V08H; ACP41953.1; Met1-Gln529). Influenza H1N1 (A/California/07/2009) Hemagglutinin / HA specific IgG was purified by Influenza H1N1 (A/California/07/2009) Hemagglutinin / HA affinity chromatography.
<b>Ig Type:</b>	Rabbit IgG
<b>Specificity:</b>	Influenza H1N1 (A/California/07/2009) Hemagglutinin / HA
<b>Formulation:</b>	0.2 µm filtered solution in PBS
<b>Storage:</b>	This antibody can be stored at 2°C-8°C for one month without detectable loss of activity. Antibody products are stable for twelve months from date of receipt when stored at -20°C to -80°C. Preservative-Free. Avoid repeated freeze-thaw cycles.
<b>Alternative Names:</b>	Hemagglutinin,HA
APPLICATIONS	
<b>Applications:</b>	WB, ELISA
	IHC, FCM, IF, IP et al. applications haven't been validated. (Antibody's applications haven't been validated with corresponding virus positive samples. Optimal concentrations/dilutions should be determined by the end user.)
RECOMMENDED CONCENTRATION	
<b>Western Blot</b>	WB: 1:1000-1:5000
<b>ELISA</b>	ELISA: 1:5000-1:10000

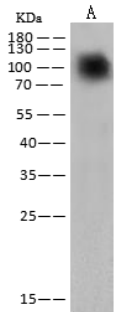
*Please Note: Optimal concentrations/dilutions should be determined by the end user.*

**Influenza A H1N1 (A/California/07/2009)  
Hemagglutinin / HA (DQ239-240 deletion)  
Antibody, Rabbit PAb, Antigen Affinity Purified**

Catalog Number: 11085-T62



Sino Biological  
Biological Solution Specialist



Anti-HA rabbit polyclonal antibody at 1:2000 dilution.

Sample: Influenza A H1N1  
(A/California/07/2009) Hemagglutinin / HA  
(DQ239-240 deletion) Protein(Cat#11085-  
V08H)  
Lane A: 20ng

Secondary  
Goat Anti-Rabbit IgG (H+L)/HRP at 1/10000 dilution

Developed using the ECL technique.  
Performed under reducing conditions.

**For Research Use Only. Not for use in diagnostic or therapeutic procedures.**

**Tel: +86-400-890-9989 (Global), +1-215-583-7898 (USA), +49(0)6196 9678656 (Europe)**

**Website: <http://www.sinobiological.com>**