

Clusterin / Apolipoprotein J / Apo-J Antibody (FITC), Rabbit MAb



Catalog Number: 11297-R013-F

EliteRmab® is a registered trademark of Sino Biological Inc.

GENERAL INFORMATION

Immunogen:	Recombinant Human Clusterin / Apolipoprotein J / Apo-J protein (Catalog#11297-H08H)
Reagents:	FITC-conjugated Rabbit monoclonal antibody
Preparation	This antibody was obtained from a rabbit immunized with purified, recombinant Human Clusterin / Apolipoprotein J / Apo-J (rh Clusterin / Apolipoprotein J / Apo-J; Catalog#11297-H08H; NP_001822.2; Met1-Glu501) and conjugated with FITC under optimum conditions, the unreacted FITC was removed.
Ig Type:	Rabbit IgG
Clone ID:	013
Specificity:	Human Clusterin / Apolipoprotein J / Apo-J
Concentration:	10 µl/Test, 0.1 mg/ml
Formulation:	PBS solution containing 0.5% BSA and 0.09% sodium azide
Storage:	This antibody can be stored at 2°C-8°C for twelve months without detectable loss of activity. Protected from prolonged exposure to light. Do not freeze ! Sodium azide is toxic to cells and should be disposed of properly. Flush with large volumes of water during disposal.
Alternative Names:	CLU

APPLICATIONS

Applications:	FCM
----------------------	-----

RECOMMENDED CONCENTRATION

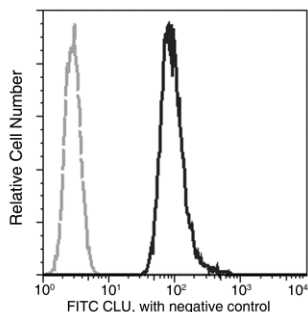
Please Note: Optimal concentrations/dilutions should be determined by the end user.

Clusterin / Apolipoprotein J / Apo-J Antibody (FITC), Rabbit MAb



Catalog Number: 11297-R013-F

EliteRmab® is a registered trademark of Sino Biological Inc.



Flow cytometric analysis of Human CLU expression in A549 cells. The cells were treated according to manufacturer's manual (BD Pharmingen™ Cat. No. 554714), and then stained with FITC Rabbit anti-Human CLU. The fluorescence histograms were derived from gated events with the forward and side light-scatter characteristics of intact cells.

Flow cytometry was performed on a BD FACSCalibur flow cytometry system. Please refer to www.sinobiological.com/Flow-Cytometry-FACS-Protocols-a-750.html for technical protocols.