

# Clusterin / Apolipoprotein J / Apo-J Antibody, Rabbit MAb



Catalog Number: 11297-R013

EliteRmab® is a registered trademark of Sino Biological Inc.

GENERAL INFORMATION	
<b>Immunogen:</b>	Recombinant Human Clusterin / Apolipoprotein J / Apo-J protein (Catalog#11297-H08H)
<b>Preparation</b>	This antibody was obtained from a rabbit immunized with purified, recombinant Human Clusterin / Apolipoprotein J / Apo-J (rh Clusterin / Apolipoprotein J / Apo-J; Catalog#11297-H08H; NP_001822.2; Met1-Glu501).
<b>Ig Type:</b>	Rabbit IgG
<b>Clone ID:</b>	13
<b>Specificity:</b>	Human Clusterin / Apolipoprotein J / Apo-J
<b>Formulation:</b>	0.2 µm filtered solution in PBS
<b>Storage:</b>	This antibody can be stored at 2°C-8°C for one month without detectable loss of activity. Antibody products are stable for twelve months from date of receipt when stored at -20°C to -80°C. Preservative-Free. Avoid repeated freeze-thaw cycles.
<b>Alternative Names:</b>	AAG4,APO-J,APOJ,CLI,CLU1,CLU2,KUB1,NA1/NA2,SGP-2,SGP2,SP-40,TRPM-2,TRPM2
APPLICATIONS	
<b>Applications:</b>	FCM,ICC/IF
RECOMMENDED CONCENTRATION	
<b>ICC/IF</b>	ICC/IF: 1:20-1:100
<b>Flow Cytometry</b>	FCM: 1:25-1:100

**Please Note: Optimal concentrations/dilutions should be determined by the end user.**

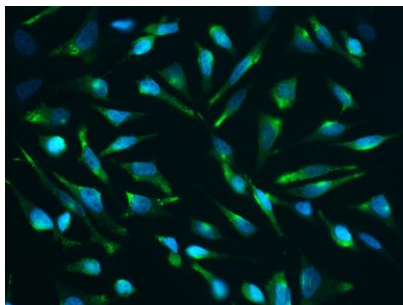
# Clusterin / Apolipoprotein J / Apo-J Antibody, Rabbit MAb

Catalog Number: 11297-R013

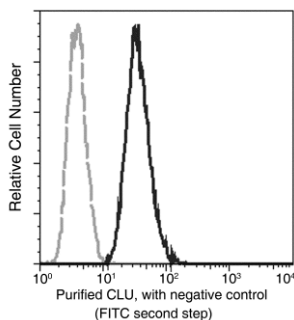


Sino Biological  
Biological Solution Specialist

EliteRmab® is a registered trademark of Sino Biological Inc.



Immunofluorescence staining of Human CLU in Hela cells. Cells were fixed with 4% PFA, permeabilized with 1% Triton X-100 in PBS, blocked with 10% serum, and incubated with Rabbit anti-Human CLU monoclonal antibody (1:60) at 37°C 1 hour. Then cells were stained with the Alexa Fluor® 488-conjugated Goat Anti-rabbit IgG secondary antibody (green). Positive staining was localized to cytoplasm.



Flow cytometric analysis of Human CLU on A549 cells. Cells were treated according to manufacturer's manual (BD Pharmingen™ Cat. No. 554714), stained with purified anti-Human CLU, then a FITC-conjugated second step antibody. The histogram were derived from gated events with the forward and side light-scatter characteristics of intact cells.

Flow cytometry was performed on a BD FACSCalibur flow cytometry system. Please refer to [www.sinobiological.com/Flow-Cytometry-FACS-Protocols-a-750.html](http://www.sinobiological.com/Flow-Cytometry-FACS-Protocols-a-750.html) for technical protocols.