

Clusterin/Apolipoprotein J/Apo-J Antibody, Rabbit PAb, Antigen Affinity Purified

Catalog Number: 11297-T04



Sino Biological
Biological Solution Specialist

GENERAL INFORMATION

Immunogen:	Recombinant Human Clusterin/Apolipoprotein J/Apo-J Protein (Catalog#11297-H08H)
Preparation	Produced in rabbits immunized with purified, recombinant Human Clusterin/Apolipoprotein J/Apo-J (rh Clusterin/Apolipoprotein J/Apo-J; Catalog#11297-H08H; NP_001822.2; Met1-Glu501). Clusterin/Apolipoprotein J/Apo-J specific IgG was purified by Human Clusterin/Apolipoprotein J/Apo-J affinity chromatography.
Ig Type:	Rabbit IgG
Specificity:	Human Clusterin/Apolipoprotein J/Apo-J
Formulation:	0.2 µm filtered solution in PBS
Storage:	This antibody can be stored at 2°C-8°C for one month without detectable loss of activity. Antibody products are stable for twelve months from date of receipt when stored at -20°C to -80°C. Preservative-Free. Sodium azide is recommended to avoid contamination (final concentration 0.05%-0.1%). It is toxic to cells and should be disposed of properly. Avoid repeated freeze-thaw cycles.

APPLICATIONS

Applications:	IP
----------------------	----

RECOMMENDED CONCENTRATION

Immunoprecipitation	IP: 1-5 µL/mg of lysate
----------------------------	-------------------------

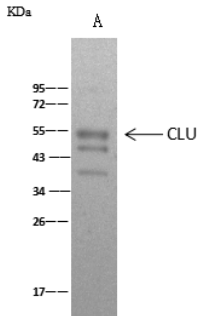
Please Note: Optimal concentrations/dilutions should be determined by the end user.

Clusterin/Apolipoprotein J/Apo-J Antibody, Rabbit PAb, Antigen Affinity Purified

Catalog Number: 11297-T04



Sino Biological
Biological Solution Specialist



CLU was immunoprecipitated using:
Lane A: 0.5 mg HeLa Whole Cell Lysate

2 μ L anti-CLU rabbit polyclonal antibody and
60 μ g of Immunomagnetic beads Protein A/G.

Primary antibody:
Anti-CLU rabbit polyclonal antibody, at 1:100
dilution

Secondary antibody:
Clean-Blot IP Detection Reagent (HRP) at
1:1000 dilution

Developed using the ECL technique.
Performed under reducing conditions.

Predicted band size: 52 kDa
Observed band size: 55 kDa