

# Clusterin/Apolipoprotein J/Apo-J Antibody, Rabbit PAb, Antigen Affinity Purified

Catalog Number: 11297-T34



Sino Biological  
Biological Solution Specialist

## GENERAL INFORMATION

<b>Immunogen:</b>	Recombinant Human Clusterin/Apolipoprotein J/Apo-J Protein (Catalog#11297-H08H)
<b>Preparation</b>	Produced in rabbits immunized with purified, recombinant Human Clusterin/Apolipoprotein J/Apo-J (rh Clusterin/Apolipoprotein J/Apo-J; Catalog#11297-H08H; NP_001822.2; Met1-Glu501). Clusterin/Apolipoprotein J/Apo-J specific IgG was purified by Human Clusterin/Apolipoprotein J/Apo-J affinity chromatography.
<b>Ig Type:</b>	Rabbit IgG
<b>Specificity:</b>	Human Clusterin/Apolipoprotein J/Apo-J
<b>Formulation:</b>	0.2 µm filtered solution in PBS
<b>Storage:</b>	This antibody can be stored at 2°C-8°C for one month without detectable loss of activity. Antibody products are stable for twelve months from date of receipt when stored at -20°C to -80°C. Preservative-Free. Avoid repeated freeze-thaw cycles.
<b>Alternative Names:</b>	AAG4,APO-J,APOJ,CLI,CLU1,CLU2,KUB1,NA1/NA2,SGP-2,SGP2,SP-40,TRPM-2,TRPM2

## APPLICATIONS

<b>Applications:</b>	WB,ICC/IF
----------------------	-----------

## RECOMMENDED CONCENTRATION

<b>ICC/IF</b>	ICC/IF: 1:300-1:10000
<b>Western Blot</b>	WB: 1:500-1:2000

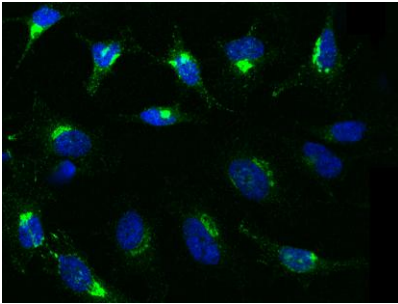
*Please Note: Optimal concentrations/dilutions should be determined by the end user.*

# Clusterin/Apolipoprotein J/Apo-J Antibody, Rabbit PAb, Antigen Affinity Purified

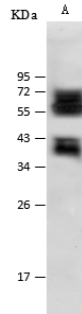
Catalog Number: 11297-T34



Sino Biological  
Biological Solution Specialist



Immunofluorescence staining of CLU-His in HELA cells. Cells were fixed with 4% PFA, permeabilized with 0.3% Triton X-100 in PBS, blocked with 10% serum, and incubated with rabbit anti-Human CLU-His polyclonal antibody (dilution ratio 1:1000) at 4°C overnight. Then cells were stained with the Alexa Fluor 488-conjugated Goat Anti-rabbit IgG secondary antibody (green) and counterstained with DAPI (blue). Positive staining was localized to cytoplasm.



Anti-CLU rabbit polyclonal antibody at 1:500 dilution

Lane A: Hela Whole Cell Lysate

Lysates/proteins at 30 µg per lane.

Secondary  
Goat Anti-Rabbit IgG (H+L)/HRP at 1/10000 dilution.

Developed using the ECL technique. Performed under reducing conditions.

Predicted band size: 52 kDa  
Observed band size: 55 kDa