

**Influenza A H1N1 (A/New Caledonia/20/1999)  
Hemagglutinin / HA Antibody, Rabbit PAb,  
Antigen Affinity Purified**

Catalog Number: 11683-T54



Sino Biological  
Biological Solution Specialist

**GENERAL INFORMATION**

<b>Immunogen:</b>	Recombinant Influenza A H1N1 (A/New Caledonia/20/1999) Hemagglutinin / HA Protein (Catalog#11683-V08H)
<b>Preparation</b>	Produced in rabbits immunized with purified, recombinant Influenza A H1N1 (A/New Caledonia/20/1999) Hemagglutinin / HA ( Catalog#11683-V08H; AAP34324.1; Met1-Gln528). Influenza A H1N1 (A/New Caledonia/20/1999) Hemagglutinin / HA specific IgG was purified by Influenza A H1N1 (A/New Caledonia/20/1999) Hemagglutinin / HA affinity chromatography.
<b>Ig Type:</b>	Rabbit IgG
<b>Specificity:</b>	Influenza A H1N1 (A/New Caledonia/20/1999) Hemagglutinin / HA
<b>Formulation:</b>	0.2 µm filtered solution in PBS
<b>Storage:</b>	This antibody can be stored at 2°C-8°C for one month without detectable loss of activity. Antibody products are stable for twelve months from date of receipt when stored at -20°C to -80°C. Preservative-Free. Avoid repeated freeze-thaw cycles.
<b>Alternative Names:</b>	Hemagglutinin,HA

**APPLICATIONS**

<b>Applications:</b>	WB,ELISA
	IHC, FCM, IF, IP et al. applications haven't been validated. (Antibody's applications haven't been validated with corresponding virus positive samples. Optimal concentrations/dilutions should be determined by the end user.)

**RECOMMENDED CONCENTRATION**

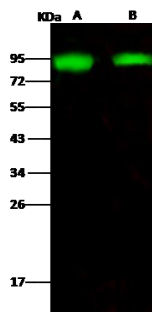
<b>Western Blot</b>	WB: 1:1000-1:5000
<b>ELISA</b>	ELISA: 1:5000-1:10000 This antibody can be used at 1:5000-1:10000 with the appropriate secondary reagents to detect Influenza A H1N1 (A/New Caledonia/20/1999) Hemagglutinin / HA.

***Please Note: Optimal concentrations/dilutions should be determined by the end user.***

**Influenza A H1N1 (A/New Caledonia/20/1999)  
Hemagglutinin / HA Antibody, Rabbit PAb,  
Antigen Affinity Purified**  
Catalog Number: 11683-T54



Sino Biological  
Biological Solution Specialist



Anti-Influenza A H1N1 (A/New Caledonia/20/1999) Hemagglutinin / HA rabbit polyclonal antibody at 1:1000 dilution.  
Sample: Influenza A H1N1 (A/New Caledonia/20/1999) Hemagglutinin / HA Recombinant Protein  
Lane A: 50ng  
Lane B: 10ng

Secondary  
Goat Anti- Rabbit IgG H&L (Dylight 800) at 1/10000 dilution.

Developed using the Odyssey technique.  
Performed under reducing conditions.