

# CD62L/L-Selectin Antibody (PerCP), Mouse MAb



Sino Biological  
Biological Solution Specialist

Catalog Number: 11838-MM01-C

## GENERAL INFORMATION

<b>Immunogen:</b>	Recombinant Human CD62L/L-Selectin Protein (Catalog#11838-H08H)
<b>Reagents:</b>	PerCP-conjugated Mouse monoclonal antibody
<b>Preparation</b>	This antibody was produced from a hybridoma resulting from the fusion of a mouse myeloma with B cells obtained from a mouse immunized with purified, recombinant Human CD62L/L-Selectin (rh CD62L/L-Selectin; Catalog#11838-H08H; P14151-1; Met1-Asn332) and conjugated with PerCP under optimum conditions, the unreacted PerCP was removed.
<b>Ig Type:</b>	Mouse IgG1
<b>Clone ID:</b>	01
<b>Specificity:</b>	Human CD62L/L-Selectin
<b>Concentration:</b>	5 µl/Test, 0.1 mg/ml
<b>Formulation:</b>	PBS solution containing 0.5% BSA and 0.09% sodium azide
<b>Storage:</b>	This antibody can be stored at 2°C-8°C for twelve months without detectable loss of activity. Protected from prolonged exposure to light. Do not freeze ! Sodium azide is toxic to cells and should be disposed of properly. Flush with large volumes of water during disposal.
<b>Alternative Names:</b>	SELL

## APPLICATIONS

**Applications:** FCM

## RECOMMENDED CONCENTRATION

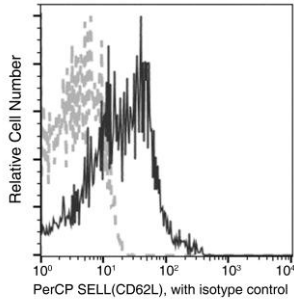
*Please Note: Optimal concentrations/dilutions should be determined by the end user.*

# CD62L/L-Selectin Antibody (PerCP), Mouse MAb



Sino Biological  
Biological Solution Specialist

Catalog Number: 11838-MM01-C



Flow cytometric analysis of Human SELL(CD62L) expression on human whole blood lymphocytes. Cells were stained with PerCP-conjugated anti-Human SELL(CD62L). The fluorescence histograms were derived from gated events with the forward and side light-scatter characteristics of viable lymphocytes.

Flow cytometry was performed on a BD FACSCalibur flow cytometry system. Please refer to [www.sinobiological.com/Flow-Cytometry-FACS-Protocols-a-750.html](http://www.sinobiological.com/Flow-Cytometry-FACS-Protocols-a-750.html) for technical protocols.