

IL2 Antibody (PE), Mouse MAb



Sino Biological
Biological Solution Specialist

Catalog Number: 11848-MM03-P

GENERAL INFORMATION

Immunogen:	Recombinant Human IL2 Protein (Catalog#11848-HNAE)
Reagents:	PE-conjugated Mouse monoclonal antibody
Preparation	This antibody was produced from a hybridoma resulting from the fusion of a mouse myeloma with B cells obtained from a mouse immunized with purified, recombinant Human IL2 (rh IL2; Catalog#11848-HNAE; P60568-1; Ala21-Thr153) and conjugated with PE under optimum conditions, the unreacted PE was removed.
Ig Type:	Mouse IgG2a
Clone ID:	03
Specificity:	Human IL2
Concentration:	5 µl/Test, 0.1 mg/ml
Formulation:	PBS solution containing 0.5% BSA and 0.09% sodium azide
Storage:	This antibody can be stored at 2°C-8°C for twelve months without detectable loss of activity. Protected from prolonged exposure to light. Do not freeze ! Sodium azide is toxic to cells and should be disposed of properly. Flush with large volumes of water during disposal.
Alternative Names:	IL2

APPLICATIONS

Applications: FCM

RECOMMENDED CONCENTRATION

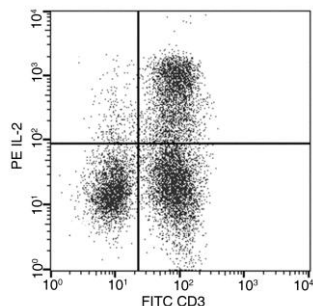
Please Note: Optimal concentrations/dilutions should be determined by the end user.

IL2 Antibody (PE), Mouse MAb



Sino Biological
Biological Solution Specialist

Catalog Number: 11848-MM03-P



Flow cytometric analysis of Human IL2 expression on human peripheral blood lymphocytes. Human peripheral blood mononuclear cells were stimulated for 4-6 hours with PMA and Ionomycin in the presence of GolgiPlug. The cells were treated according to manufacturer's manual (BD Pharmingen™ Cat. No. 554714), stained with PE-conjugated anti-Human IL2 and FITC-conjugated anti-Human CD3. The dot plots were derived from gated events with the forward and side light-scatter characteristics of viable lymphocytes.

Flow cytometry was performed on a BD FACSCalibur flow cytometry system. Please refer to www.sinobiological.com/Flow-Cytometry-FACS-Protocols-a-750.html for technical protocols.

For Research Use Only. Not for use in diagnostic or therapeutic procedures.

Tel: +86-400-890-9989 (Global), +1-215-583-7898 (USA), +49(0)6196 9678656 (Europe)

Website: <http://www.sinobiological.com>