

Rabbit Monoclonal Antibody to GFP



Catalog Number: 13105-R208

GENERAL INFORMATION

Immunogen:	Recombinant Aequorea victoria GFP protein (Catalog#13105-S07E)
Antibody Type:	Rabbit Monoclonal Antibody
Clone ID:	208
Preparation	This antibody was obtained from a rabbit immunized with purified, recombinant Aequorea victoria GFP (Catalog#13105-S07E; AAB65663; Ser2-Lys238).
Ig Type:	Rabbit IgG
Specificity:	Aequorea victoria GFP
Formulation:	0.2 µm filtered solution in PBS ,pH7.4
Storage:	This antibody can be stored at 2°C-8°C for one month without detectable loss of activity. Antibody products are stable for twelve months from date of receipt when stored at -20°C to -80°C. Preservative-Free. Sodium azide is recommended to avoid contamination (final concentration 0.05%-0.1%). It is toxic to cells and should be disposed of properly. Avoid repeated freeze-thaw cycles.

APPLICATIONS

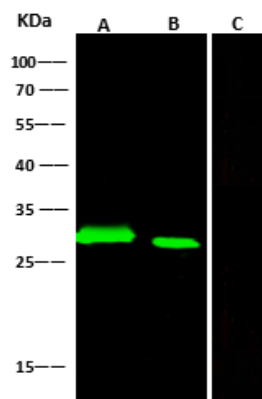
Applications: WB, ELISA, IP

RECOMMENDED CONCENTRATION

Western Blot	WB: 1/1000-1/5000
ELISA	ELISA: 1/10000-1/20000
Immunoprecipitation	IP: 1/500-1/2000

Please Note: Optimal concentrations/dilutions should be determined by the end user.

WB: 1/1000-1/5000



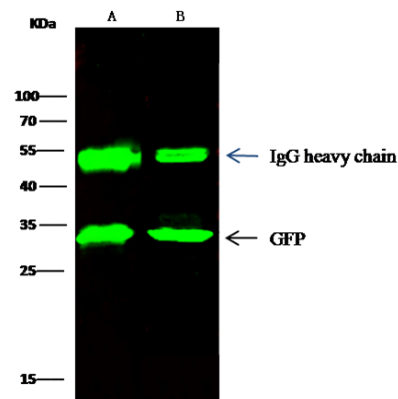
Anti-GFP rabbit monoclonal antibody at 1:500 dilution
Lane A: GFP transfected E.coli lysate (5ug)
Lane B: GFP transfected 293 Cell lysate (30ug)
Lane C: Non-transfected 293 Cells lysate (30ug)

Secondary
Goat Anti-Rabbit IgG H&L (Dylight800) at 1/10000 dilution.

Developed using the Odyssey technique.
Performed under reducing conditions.

Predicted band size:27 kDa
Observed band size:27 kDa

IP: 1/500-1/2000



Anti-GFP Tag was immunoprecipitated using:
Lane A: GFP transfected E.coli cell lysate (0.5mg)
Lane B: GFP transfected 293 cell lysate (0.5mg)

Anti-GFP Tag mouse monoclonal antibody at 1/500-1/2000 dilution and 60µg of Immunomagnetic beads Protein G.

Primary antibody:
Anti-GFP Tag rabbit monoclonal antibody, at 1:1000-1/5000 dilution

Secondary
Goat Anti-Mouse IgG H&L (Dylight800) at 1/10000 dilution.

Developed using the Odyssey technique.
Performed under reducing conditions.

Manufactured By Sino Biological Inc., FOR RESEARCH USE ONLY. NOT FOR USE IN HUMANS.

Fax :+86-10-58628220

Tel: 215-583-7898 (US); +86-400-890-9989(Global)

<http://www.sinobiological.com>