

MCP-1 / CCL2 Antibody, Rabbit PAb, Antigen Affinity Purified



Sino Biological
Biological Solution Specialist

Catalog Number: 201199-T08

GENERAL INFORMATION

| | |
|---------------------|---|
| Immunogen: | E. coli-derived Human MCP-1 / CCL2 fragment |
| Preparation | Produced in rabbits immunized with E. coli-derived Human MCP-1 / CCL2 fragment, and purified by antigen affinity chromatography. |
| Ig Type: | Rabbit IgG |
| Specificity: | Human MCP-1 / CCL2 |
| Formulation: | PBS, pH7.0 with 0.03% Proclin300 |
| Storage: | This antibody can be stored at 2°C-8°C for one month without detectable loss of activity. Antibody products are stable for twelve months from date of receipt when stored at -20°C to -80°C. Avoid repeated freeze-thaw cycles. |

APPLICATIONS

Applications: IHC-P

RECOMMENDED CONCENTRATION

IHC-P IHC-P: 1:50-1:200

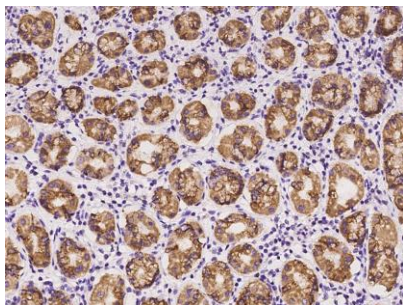
Please Note: Optimal concentrations/dilutions should be determined by the end user.

MCP-1 / CCL2 Antibody, Rabbit PAb, Antigen Affinity Purified



Sino Biological
Biological Solution Specialist

Catalog Number: 201199-T08



Immunochemical staining of human CCL2 in human stomach with rabbit polyclonal antibody at 1:100 dilution, formalin-fixed paraffin embedded sections.