

MERS-CoV Spike Antibody, Rabbit PAb, Antigen Affinity Purified



Sino Biological
Biological Solution Specialist

Catalog Number: 40069-T46

GENERAL INFORMATION

Immunogen:	Recombinant MERS-CoV (NCoV / Novel coronavirus) Spike Protein (Catalog#40069-V08B)
Preparation	Produced in rabbits immunized with purified, recombinant MERS-CoV (NCoV / Novel coronavirus) Spike (Catalog#40069-V08B; AFS88936.1; Met1-Trp1297). MERS-CoV (NCoV / Novel coronavirus) Spike specific IgG was purified by MERS-CoV (NCoV / Novel coronavirus) Spike affinity chromatography.
Ig Type:	Rabbit IgG
Specificity:	MERS-CoV (NCoV / Novel coronavirus) Spike
Formulation:	0.2 µm filtered solution in PBS
Storage:	This antibody can be stored at 2°C-8°C for one month without detectable loss of activity. Antibody products are stable for twelve months from date of receipt when stored at -20°C to -80°C. Preservative-Free. Sodium azide is recommended to avoid contamination (final concentration 0.05%-0.1%). It is toxic to cells and should be disposed of properly. Avoid repeated freeze-thaw cycles.

APPLICATIONS

Applications:	WB
	IHC, FCM, IF, IP et al. applications haven't been validated. (Antibody's applications haven't been validated with corresponding virus positive samples. Optimal concentrations/dilutions should be determined by the end user.)

RECOMMENDED CONCENTRATION

Western Blot	WB: 1:1000-1:5000
---------------------	-------------------

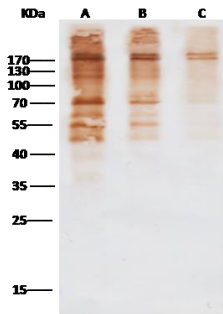
Please Note: Optimal concentrations/dilutions should be determined by the end user.

MERS-CoV Spike Antibody, Rabbit PAb, Antigen Affinity Purified



Sino Biological
Biological Solution Specialist

Catalog Number: 40069-T46



Anti-MERS-CoV (NCoV / Novel coronavirus)
Spike Protein (ECD, aa 1-1297) rabbit
polyclonal antibody at 1:1000 dilution.
Sample: MERS-CoV (NCoV / Novel
coronavirus) Spike Protein (ECD, aa 1-1297)
Recombinant Protein
Lane A: 5ng
Lane B: 1ng
Lane C: 0.5ng

Secondary
HRP Conjugated Goat anti-Rabbit IgG (H+L)
at 1/1000 dilution

Performed under reducing conditions.