

MERS-CoV Spike Protein S1 Antibody, Rabbit PAb, Antigen Affinity Purified



Sino Biological
Biological Solution Specialist

Catalog Number: 40069-T52

| GENERAL INFORMATION | |
|---------------------------|---|
| Immunogen: | Recombinant MERS-CoV (NCoV / Novel coronavirus) Spike Protein S1 Protein (Catalog#40069-V08H) |
| Preparation | Produced in rabbits immunized with purified, recombinant MERS-CoV (NCoV / Novel coronavirus) Spike Protein S1 (Catalog#40069-V08H; AFS88936.1; Met1-Glu725). MERS-CoV (NCoV / Novel coronavirus) Spike Protein S1 specific IgG was purified by MERS-CoV (NCoV / Novel coronavirus) Spike Protein S1 affinity chromatography. |
| Ig Type: | Rabbit IgG |
| Specificity: | MERS-CoV (NCoV / Novel coronavirus) Spike Protein S1 |
| Formulation: | 0.2 µm filtered solution in PBS |
| Storage: | This antibody can be stored at 2°C-8°C for one month without detectable loss of activity. Antibody products are stable for twelve months from date of receipt when stored at -20°C to -80°C. Preservative-Free. Sodium azide is recommended to avoid contamination (final concentration 0.05%-0.1%). It is toxic to cells and should be disposed of properly. Avoid repeated freeze-thaw cycles. |
| APPLICATIONS | |
| Applications: | WB,ELISA |
| | IHC, FCM, IF, IP et al. applications haven't been validated. (Antibody's applications haven't been validated with corresponding virus positive samples. Optimal concentrations/dilutions should be determined by the end user.) |
| RECOMMENDED CONCENTRATION | |
| Western Blot | WB: 1:1000-1:5000 |
| ELISA | ELISA: 1:5000-1:10000 This antibody can be used at 1:5000-1:10000 with the appropriate secondary reagents to detect MERS-CoV (NCoV / Novel coronavirus) Spike Protein S1. |

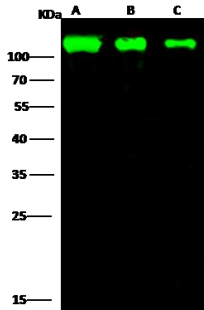
Please Note: Optimal concentrations/dilutions should be determined by the end user.

**MERS-CoV Spike Protein S1 Antibody,
Rabbit PAb, Antigen Affinity Purified**



Sino Biological
Biological Solution Specialist

Catalog Number: 40069-T52



Anti-MERS-CoV (NCoV / Novel coronavirus)
Spike Protein S1 rabbit polyclonal antibody at
1:1000 dilution.

Sample: MERS-CoV (NCoV / Novel
coronavirus) Spike Protein S1 Recombinant
Protein

Lane A: 20ng

Lane B: 5ng

Lane C: 1ng

Secondary

Goat Anti- Rabbit IgG H&L (Dylight 800) at
1/5000 dilution.

Developed using the Odyssey technique.

Performed under reducing conditions