

MERS-CoV Spike Antibody, Rabbit PAb, Antigen Affinity Purified



Sino Biological
Biological Solution Specialist

Catalog Number: 40069-T62

GENERAL INFORMATION	
Immunogen:	Recombinant MERS-CoV (NCoV / Novel coronavirus) Spike Protein (ECD, aa 1-1297) (Catalog#40069-V08B)
Preparation	Produced in rabbits immunized with purified, recombinant MERS-CoV (NCoV / Novel coronavirus) Spike Protein (Catalog#40069-V08B; AFS88936.1; Met1-Trp1297). Spike Protein specific IgG was purified by MERS-CoV (NCoV / Novel coronavirus) Spike Protein affinity chromatography.
Ig Type:	Rabbit IgG
Specificity:	The antibody reacts with MERS-CoV (NCoV / Novel coronavirus) full-length Spike protein (S protein).
Formulation:	0.2 µm filtered solution in PBS
Storage:	This antibody can be stored at 2°C-8°C for one month without detectable loss of activity. Antibody products are stable for twelve months from date of receipt when stored at -20°C to -80°C. Preservative-Free. Avoid repeated freeze-thaw cycles.
Alternative Names:	S
APPLICATIONS	
Applications:	WB,ELISA
	IHC, FCM, IF, IP et al. applications haven't been validated. (Antibody's applications haven't been validated with corresponding virus positive samples. Optimal concentrations/dilutions should be determined by the end user.)
RECOMMENDED CONCENTRATION	
Western Blot	WB: 1:1000-1:5000
ELISA	ELISA: 1:5000-1:10000 This antibody can be used at 1:5000-1:10000 with the appropriate secondary reagents to detect MERS-CoV (NCoV / Novel coronavirus) Spike Protein (ECD, aa 1-1297) (Catalog#40069-V08B) in ELISA.

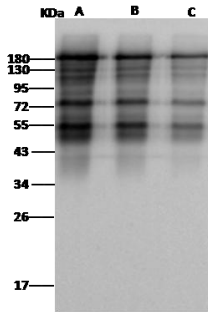
Please Note: Optimal concentrations/dilutions should be determined by the end user.

MERS-CoV Spike Antibody, Rabbit PAb, Antigen Affinity Purified



Sino Biological
Biological Solution Specialist

Catalog Number: 40069-T62



Anti-MERS-CoV (NCoV / Novel coronavirus)
(NCoV / Novel coronavirus) Spike protein
(ECD, aa 1-1297) rabbit polyclonal antibody at
1:1000 dilution.

Sample: MERS-CoV (NCoV / Novel
coronavirus) (NCoV / Novel coronavirus) Spike
protein (ECD, aa 1-1297)

Lane A: 5ng
Lane B: 2ng
Lane C: 1ng

Secondary

Goat Anti-Rabbit IgG (H+L)/HRP at 1/10000
dilution.

Developed using the ECL technique.
Performed under reducing conditions.