

**MERS-CoV (NCoV / Novel coronavirus)
Spike Protein S2 Antibody, Rabbit PAb,
Antigen Affinity Purified**

Catalog Number: 40070-T60



Sino Biological
Biological Solution Specialist

GENERAL INFORMATION	
Immunogen:	Recombinant MERS-CoV (NCoV / Novel coronavirus) Spike glycoprotein Protein (Catalog#40070-V08B)
Preparation	Produced in rabbits immunized with purified, recombinant MERS-CoV (NCoV / Novel coronavirus) Spike Protein S2 (Catalog#40070-V08B; AFS88936.1; Asp726-Pro1296), and purified by antigen affinity chromatography.
Ig Type:	Rabbit IgG
Specificity:	MERS-CoV (NCoV / Novel coronavirus) Spike Protein S2
Formulation:	0.2 µm filtered solution in PBS
Storage:	This antibody can be stored at 2°C-8°C for one month without detectable loss of activity. Antibody products are stable for twelve months from date of receipt when stored at -20°C to -80°C. Preservative-Free. Sodium azide is recommended to avoid contamination (final concentration 0.05%-0.1%). It is toxic to cells and should be disposed of properly. Avoid repeated freeze-thaw cycles.
APPLICATIONS	
Applications:	WB,ELISA
	IHC, FCM, IF, IP et al. applications haven't been validated. (Antibody's applications haven't been validated with corresponding virus positive samples. Optimal concentrations/dilutions should be determined by the end user.)
RECOMMENDED CONCENTRATION	
Western Blot	WB: 1:1000-1:5000
ELISA	ELISA: 1:5000-1:10000 This antibody can be used at 1:5000-1:10000 with the appropriate secondary reagents to detect MERS-CoV (NCoV / Novel coronavirus) Spike Protein S2.

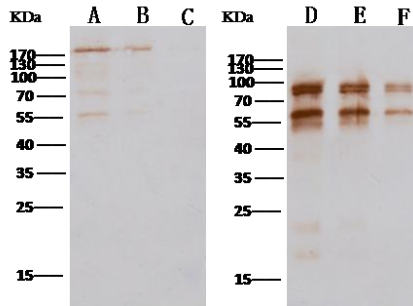
Please Note: Optimal concentrations/dilutions should be determined by the end user.

**MERS-CoV (NCoV / Novel coronavirus)
Spike Protein S2 Antibody, Rabbit PAb,
Antigen Affinity Purified**

Catalog Number: 40070-T60



Sino Biological
Biological Solution Specialist



Anti-Novel coronavirus (HCoV-EMC/2012) Spike Protein S2 (aa 726-1296) rabbit polyclonal antibody at 1:1000 dilution
Sample: Novel coronavirus (HCoV-EMC/2012) Spike protein (ECD, aa 1-1297)

Lane A: 5ng
Lane B: 1ng
Lane C: 0.5ng

Sample: Novel coronavirus (HCoV-EMC/2012) Spike Protein S2 (aa 726-1296)

Lane D: 10ng
Lane E: 5ng
Lane F: 2ng

Secondary

Goat anti Rabbit IgG (H+L)/HRP at 0.4ug/ml.

Performed under reducing conditions.