

**MERS-CoV (NCoV / Novel coronavirus)  
Spike Protein S2 Antibody, Rabbit PAb,  
Antigen Affinity Purified**

Catalog Number: 40070-T62



Sino Biological  
Biological Solution Specialist

GENERAL INFORMATION	
<b>Immunogen:</b>	Recombinant MERS-CoV (NCoV / Novel coronavirus) Spike glycoprotein Protein (Catalog#40070-V08B)
<b>Preparation</b>	Produced in rabbits immunized with purified, recombinant MERS-CoV (NCoV / Novel coronavirus) Spike Protein S2 (Catalog#40070-V08B; AFS88936.1; Asp726-Pro1296), and purified by antigen affinity chromatography.
<b>Ig Type:</b>	Rabbit IgG
<b>Specificity:</b>	MERS-CoV (NCoV / Novel coronavirus) Spike Protein S2
<b>Formulation:</b>	0.2 µm filtered solution in PBS
<b>Storage:</b>	This antibody can be stored at 2°C-8°C for one month without detectable loss of activity. Antibody products are stable for twelve months from date of receipt when stored at -20°C to -80°C. Preservative-Free. Sodium azide is recommended to avoid contamination (final concentration 0.05%-0.1%). It is toxic to cells and should be disposed of properly. Avoid repeated freeze-thaw cycles.
APPLICATIONS	
<b>Applications:</b>	WB,ELISA
	IHC, FCM, IF, IP et al. applications haven't been validated. (Antibody's applications haven't been validated with corresponding virus positive samples. Optimal concentrations/dilutions should be determined by the end user.)
RECOMMENDED CONCENTRATION	
<b>Western Blot</b>	WB: 1:1000-1:5000
<b>ELISA</b>	ELISA: 1:5000-1:10000 This antibody can be used at 1:5000-1:10000 with the appropriate secondary reagents to detect MERS-CoV (NCoV / Novel coronavirus) Spike Protein S2.

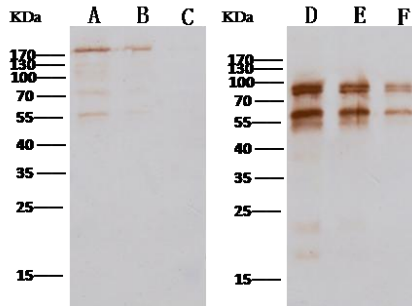
***Please Note: Optimal concentrations/dilutions should be determined by the end user.***

**MERS-CoV (NCoV / Novel coronavirus)  
Spike Protein S2 Antibody, Rabbit PAb,  
Antigen Affinity Purified**

Catalog Number: 40070-T62



Sino Biological  
Biological Solution Specialist



Anti-Novel coronavirus (HCoV-EMC/2012) Spike Protein S2 (aa 726-1296) rabbit polyclonal antibody at 1:1000 dilution  
Sample: Novel coronavirus (HCoV-EMC/2012) Spike protein (ECD, aa 1-1297)

Lane A: 5ng  
Lane B: 1ng  
Lane C: 0.5ng

Sample: Novel coronavirus (HCoV-EMC/2012) Spike Protein S2 (aa 726-1296)

Lane D: 10ng  
Lane E: 5ng  
Lane F: 2ng

Secondary

Goat anti Rabbit IgG (H+L)/HRP at 0.4ug/ml.

Performed under reducing conditions.