

# SARS-CoV Nucleoprotein / NP Antibody, Mouse MAb



Sino Biological  
Biological Solution Specialist

Catalog Number: 40143-MM05

GENERAL INFORMATION	
<b>Immunogen:</b>	Recombinant SARS-CoV Nucleoprotein / NP Protein (Catalog#40143-V08B)
<b>Preparation</b>	This antibody was produced from a hybridoma resulting from the fusion of a mouse myeloma with B cells obtained from a mouse immunized with purified, recombinant SARS-CoV Nucleoprotein / NP (Catalog#40143-V08B; NP_828858.1; Met1-Ala422). The IgG fraction of the cell culture supernatant was purified by Protein A affinity chromatography.
<b>Ig Type:</b>	Mouse IgG1
<b>Clone ID:</b>	05
<b>Specificity:</b>	SARS-CoV Nucleocapsid Protein Has cross-reactivity in ELISA and WB with SARS-CoV-2 (2019-nCoV) Nucleocapsid Protein (Cat# 40588-V08B)  No cross-reactivity in ELISA with MERS-CoV Nucleoprotein protein (40068-V08B) HCoV-229E Nucleoprotein protein (40640-V07E) HCoV-NL63 Nucleoprotein protein (40641-V07E) HCoV-HKU1(isolate N5) Nucleoprotein protein (40642-V07E) HCoV-OC43 Nucleoprotein (40643-V07E)
<b>Formulation:</b>	0.2 µm filtered solution in PBS
<b>Storage:</b>	This antibody can be stored at 2°C-8°C for one month without detectable loss of activity. Antibody products are stable for twelve months from date of receipt when stored at -20°C to -80°C. Preservative-Free. Avoid repeated freeze-thaw cycles.
<b>Alternative Names:</b>	NP
APPLICATIONS	
<b>Applications:</b>	WB,ELISA,IHC-P,FCM  (Antibody's applications have not been validated with corresponding viruses. Optimal concentrations/dilutions should be determined by the end user.)
RECOMMENDED CONCENTRATION	
<b>Western Blot</b>	WB: 1:1000-1:10000
<b>ELISA</b>	ELISA: 1:1000-1:2000
<b>IHC-P</b>	IHC-P: 1:1000-1:5000
<b>FCM</b>	FCM: 1:25-1:100

**Please Note: Optimal concentrations/dilutions should be determined by the end user.**

Manufactured By Sino Biological Inc.

Tel: 215-583-7898 (US); +86-400-890-9989(Global) ●

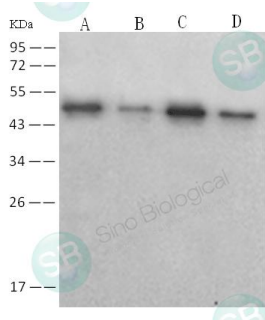
<http://www.sinobiological.com>

# SARS-CoV Nucleoprotein / NP Antibody, Mouse MAb



Sino Biological  
Biological Solution Specialist

Catalog Number: 40143-MM05

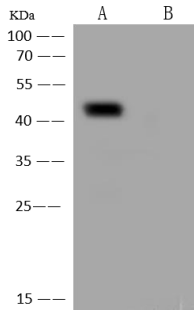


Anti-SARS-NP mouse monoclonal antibody at 1:1000 dilution.

Lane A: SARS-CoV NP Protein (Cat#40143-V08B) (30ng)  
Lane B: SARS-CoV NP Protein (Cat#40143-V08B) (5ng)  
Lane C: SARS-CoV-2 (2019-nCoV) NP Protein (Cat#40588-V08B) (30ng)  
Lane D: SARS-CoV-2 (2019-nCoV) NP Protein (Cat#40588-V08B) (5ng)

Secondary  
Goat Anti-Mouse IgG (H+L)/HRP at 1/10000 dilution.

Developed using the ECL technique.  
Performed under reducing conditions.



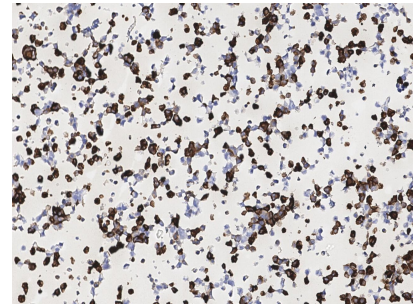
Anti-SARS-CoV / SARS-CoV-2 Nucleocapsid mouse monoclonal antibody at 1:5000 dilution.

Lane A: SARS-COV-2 Nucleocapsid overexpressed HEK293 Whole Cell Lysate  
Lane B: HEK293 Whole Cell Lysate

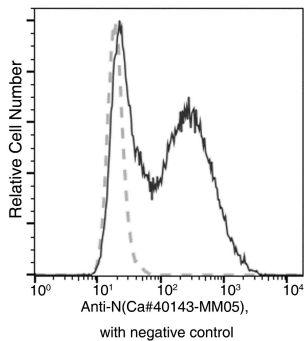
Lysates/proteins at 10 µg per lane.

Secondary  
Goat Anti-Mouse IgG (H+L)/HRP at 1/10000 dilution

Developed using the ECL technique.  
Performed under reducing condition



Immunochemical analysis of Nucleocapsid overexpressed Hek293 Cells were stained with purified anti-SARS-CoV-2 Nucleocapsid Mouse Mab, then a HRP-conjugated second step antibody.



Flow cytometric analysis of SARS-COV-2 Nucleocapsid overexpressed HEK293 Cells were stained with purified anti-SARS-COV-2 Nucleocapsid Mouse MAb, then a FITC-conjugated second step antibody. The fluorescence histograms were derived from gated events with the forward and side light-scatter characteristics of intact cells.

Manufactured By Sino Biological Inc.

Tel: 215-583-7898 (US); +86-400-890-9989(Global) ●

<http://www.sinobiological.com>