

# SARS-CoV / SARS-CoV-2 Nucleocapsid Antibody, Chimeric MAb



Sino Biological  
Biological Solution Specialist

Catalog Number: 40143-R004A

GENERAL INFORMATION	
<b>Immunogen:</b>	Recombinant SARS-CoV Nucleoprotein / NP Protein (Catalog#40143-V08B)
<b>Preparation</b>	It is a chimeric monoclonal antibody combining the constant domains of the human IgG1 molecule with rabbit variable regions, and the variable region was from rabbit monoclonal antibody (Cat#40143-R004). The chimeric monoclonal antibody was produced using recombinant antibody technology.
<b>Ig Type:</b>	Rabbit (variable region) / human (kappa / IgG1 constant) chimeric antibody
<b>Clone ID:</b>	004
<b>Specificity:</b>	SARS-CoV Nucleocapsid Protein  <b>Has cross-reactivity in ELISA with</b> SARS-CoV-2 (2019-nCoV) Nucleocapsid Protein (Cat# 40588-V08B)  <b>No cross-reactivity in ELISA with</b> MERS-CoV Nucleoprotein protein (40068-V08B) HCoV-229E Nucleoprotein protein (40640-V07E) HCoV-NL63 Nucleoprotein protein (40641-V07E) HCoV-HKU1(isolate N5) Nucleoprotein protein (40642-V07E) HCoV-OC43 Nucleoprotein (40643-V07E)
<b>Formulation:</b>	0.2 µm filtered solution in PBS
<b>Storage:</b>	This antibody can be stored at 2°C-8°C for one month without detectable loss of activity. Antibody products are stable for twelve months from date of receipt when stored at -20°C to -80°C. Preservative-Free. Avoid repeated freeze-thaw cycles.
<b>Alternative Names:</b>	NP
APPLICATIONS	
<b>Applications:</b>	WB,ELISA,FCM,IHC-P,ICC/IF  (Antibody's applications have not been validated with corresponding viruses. Optimal concentrations/dilutions should be determined by the end user.)
RECOMMENDED CONCENTRATION	
<b>Western Blot</b>	WB: 1:2000-1:5000
<b>ELISA</b>	ELISA: 1:5000-1:10000
<b>FCM</b>	FCM: 1:25-1:100
<b>IHC-P</b>	IHC-P: 1:20-1:100
<b>ICC/IF</b>	IF: 1:20-1:100

**Please Note: Optimal concentrations/dilutions should be determined by the end user.**

Manufactured By Sino Biological Inc.

Tel: 215-583-7898 (US); +86-400-890-9989(Global) ●

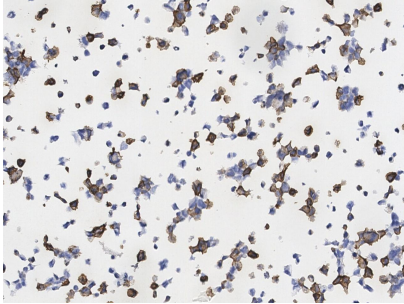
<http://www.sinobiological.com>

# SARS-CoV / SARS-CoV-2 Nucleocapsid Antibody, Chimeric MAb

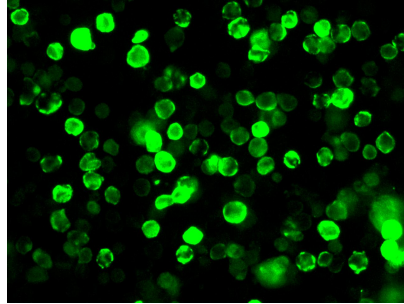


Sino Biological  
Biological Solution Specialist

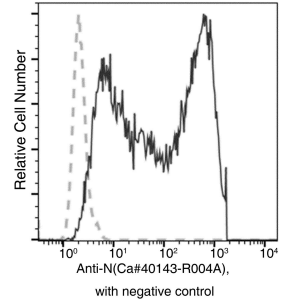
Catalog Number: 40143-R004A



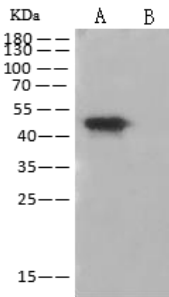
Immunohistochemical analysis of SARS-CoV-2 Nucleocapsid overexpressed HEK293 Cells were stained with purified anti-SARS Nucleocapsid Chimera Mab, then a HRP-conjugated second step antibody.



Immunofluorescence analysis of SARS-CoV-2 Nucleocapsid overexpressed HEK293 Cells were stained with purified anti-SARS Nucleocapsid Chimera Mab, then a FITC-conjugated second step antibody.



Flow cytometric analysis of SARS-CoV-2 Nucleocapsid overexpressed HEK293 Cells were stained with purified anti-SARS-CoV-2 Nucleocapsid Chimeric MAb, then a FITC-conjugated second step antibody. The fluorescence histograms were derived from gated events with the forward and side light-scatter characteristics of intact cells.



**Anti-SARS-CoV / SARS-CoV-2 Nucleocapsid Chimeric monoclonal antibody at 1:2000 dilution.**

Lane A: SARS-CoV-2 Nucleocapsid overexpressed HEK293 Whole Cell Lysate  
Lane B: HEK293 Whole Cell Lysate

Lysates/proteins at 30 µg per lane.

### Secondary

Goat Anti-Human IgG Fc/HRP at 1/1000 dilution

Developed using the ECL technique.  
Performed under reducing conditions.

Manufactured By Sino Biological Inc.

Tel: 215-583-7898 (US); +86-400-890-9989(Global) ●

<http://www.sinobiological.com>