

# SARS-CoV Nucleocapsid Antibody, Rabbit PAb, Antigen Affinity Purified

Has cross-reactivity in ELISA and WB with SARS-CoV-2 (2019-nCoV) Nucleocapsid Protein (Cat# 40588-V08B).

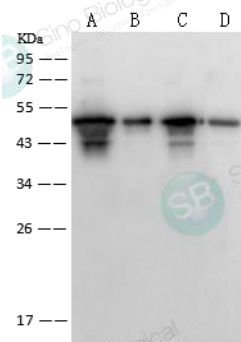
Catalog Number: 40143-T62



Sino Biological  
Biological Solution Specialist

GENERAL INFORMATION	
<b>Immunogen:</b>	Recombinant SARS-CoV Nucleocapsid Protein (Catalog#40143-V08B)
<b>Preparation</b>	Produced in rabbits immunized with purified, recombinant SARS-CoV Nucleocapsid (Catalog#40143-V08B; NP_828858.1; Met1-Ala422). SARS-CoV Nucleocapsid specific IgG was purified by SARS-CoV Nucleocapsid affinity chromatography.
<b>Ig Type:</b>	Rabbit IgG
<b>Specificity:</b>	SARS-CoV Nucleocapsid Has cross-reactivity in ELISA and WB with SARS-CoV-2 (2019-nCoV) Nucleocapsid Protein (Cat# 40588-V08B).
<b>Formulation:</b>	0.2 µm filtered solution in PBS
<b>Storage:</b>	This antibody can be stored at 2°C-8°C for one month without detectable loss of activity. Antibody products are stable for twelve months from date of receipt when stored at -20°C to -80°C. Preservative-Free. Avoid repeated freeze-thaw cycles.
<b>Alternative Names:</b>	NP
APPLICATIONS	
<b>Applications:</b>	WB, ELISA IHC, FCM, IF, IP et al. applications haven't been validated. (Antibody's applications haven't been validated with corresponding virus positive samples. Optimal concentrations/dilutions should be determined by the end user.)
RECOMMENDED CONCENTRATION	
<b>Western Blot</b>	WB: 1:1000-1:5000
<b>ELISA</b>	ELISA: 1:5000-1:10000

**Please Note: Optimal concentrations/dilutions should be determined by the end user.**



Anti-SARS-NP rabbit polyclonal antibody at 1:2000 dilution.

Lane A: SARS-CoV NP Protein (Cat#40143-V08B) (30ng)

Lane B: SARS-CoV NP Protein (Cat#40143-V08B) (5ng)

Lane C: SARS-CoV-2 (2019-nCoV) NP Protein (Cat# 40588-V08B) (30ng)

Lane D: SARS-CoV-2 (2019-nCoV) NP Protein (Cat# 40588-V08B) (5ng)

Secondary

Goat Anti-Rabbit IgG (H+L)/HRP at 1/10000 dilution.

Developed using the ECL technique.

Performed under reducing conditions.

Manufactured By Sino Biological Inc.

Tel: 215-583-7898 (US); +86-400-890-9989(Global) ●

<http://www.sinobiological.com>