

Influenza H18N11 (A/flat-faced bat/Peru/033/2010) Hemagglutinin / HA1 Antibody, Rabbit PAb, Antigen Affinity Purified

Catalog Number: 40324-T62



Sino Biological
Biological Solution Specialist

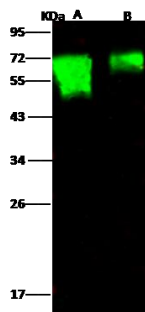
GENERAL INFORMATION	
Immunogen:	Recombinant Influenza H18N11 (A/flat-faced bat/Peru/033/2010) Hemagglutinin / HA1 Protein (Catalog#40324-V08H1)
Preparation	Produced in rabbits immunized with purified, recombinant Influenza H18N11 (A/flat-faced bat/Peru/033/2010) Hemagglutinin / HA1 (Catalog#40324-V08H1; AGX84934.1; Met1-Arg339). Influenza H18N11 (A/flat-faced bat/Peru/033/2010) Hemagglutinin / HA1 specific IgG was purified by Influenza H18N11 (A/flat-faced bat/Peru/033/2010) Hemagglutinin / HA1 affinity chromatography.
Ig Type:	Rabbit IgG
Specificity:	Influenza H18N11 (A/flat-faced bat/Peru/033/2010) Hemagglutinin / HA1
Formulation:	0.2 µm filtered solution in PBS
Storage:	This antibody can be stored at 2°C-8°C for one month without detectable loss of activity. Antibody products are stable for twelve months from date of receipt when stored at -20°C to -80°C. Preservative-Free. Avoid repeated freeze-thaw cycles.
Alternative Names:	Hemagglutinin,HA1
APPLICATIONS	
Applications:	WB,ELISA
	IHC, FCM, IF, IP et al. applications haven't been validated. (Antibody's applications haven't been validated with corresponding virus positive samples. Optimal concentrations/dilutions should be determined by the end user.)
RECOMMENDED CONCENTRATION	
Western Blot	WB: 1:1000-1:5000
ELISA	ELISA: 1:5000-1:10000 This antibody can be used at 1:5000-1:10000 with the appropriate secondary reagents to detect Influenza H18N11 (A/flat-faced bat/Peru/033/2010) Hemagglutinin / HA1.

Please Note: Optimal concentrations/dilutions should be determined by the end user.

**Influenza H18N11 (A/flat-faced
bat/Peru/033/2010) Hemagglutinin / HA1
Antibody, Rabbit PAb, Antigen Affinity
Purified**
Catalog Number: 40324-T62



Sino Biological
Biological Solution Specialist



Anti-Influenza A H18N11 (A/flat-faced
bat/Peru/033/2010) Hemagglutinin / HA1
rabbit polyclonal antibody at 1:1000 dilution.
Sample: Influenza A H18N11 (A/flat-faced
bat/Peru/033/2010) Hemagglutinin / HA1
Recombinant Protein
Lane A: 50ng
Lane B: 10ng

Secondary
Goat Anti- Rabbit IgG H&L (Dylight 800) at
1/10000 dilution.

Developed using the Odyssey technique.
Performed under reducing conditions.