

Influenza A H6N2
(A/chicken/Guangdong/C273/2011)
Hemagglutinin / HA1 Antibody, Rabbit PAb,
Antigen Affinity Purified
Catalog Number: 40398-T62



Sino Biological
Biological Solution Specialist

GENERAL INFORMATION

Immunogen:	Recombinant Influenza A H6N2 (A/chicken/Guangdong/C273/2011) Hemagglutinin / HA1 Protein (Catalog#40398-V08H1)
Preparation	Produced in rabbits immunized with purified, recombinant Influenza A H6N2 (A/chicken/Guangdong/C273/2011) Hemagglutinin / HA1 (Catalog#40398-V08H1; AFJ19048.1; Met1-Arg344). Influenza A H6N2 (A/chicken/Guangdong/C273/2011) Hemagglutinin / HA1 specific IgG was purified by Influenza A H6N2 (A/chicken/Guangdong/C273/2011) Hemagglutinin / HA1 affinity chromatography.
Ig Type:	Rabbit IgG
Specificity:	Influenza A H6N2 (A/chicken/Guangdong/C273/2011) Hemagglutinin / HA1
Formulation:	0.2 µm filtered solution in PBS
Storage:	This antibody can be stored at 2°C-8°C for one month without detectable loss of activity. Antibody products are stable for twelve months from date of receipt when stored at -20°C to -80°C. Preservative-Free. Avoid repeated freeze-thaw cycles.
Alternative Names:	Hemagglutinin,HA1

APPLICATIONS

Applications:	WB,ELISA
	IHC, FCM, IF, IP et al. applications haven't been validated. (Antibody's applications haven't been validated with corresponding virus positive samples. Optimal concentrations/dilutions should be determined by the end user.)

RECOMMENDED CONCENTRATION

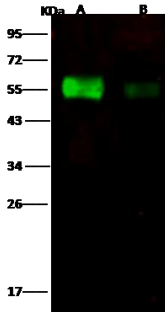
Western Blot	WB: 1:1000-1:5000
ELISA	ELISA: 1:5000-1:10000 This antibody can be used at 1:5000-1:10000 with the appropriate secondary reagents to detect Influenza A H6N2 (A/chicken/Guangdong/C273/2011) Hemagglutinin / HA1.

Please Note: Optimal concentrations/dilutions should be determined by the end user.

Influenza A H6N2
(A/chicken/Guangdong/C273/2011)
Hemagglutinin / HA1 Antibody, Rabbit PAb,
Antigen Affinity Purified
Catalog Number: 40398-T62



Sino Biological
Biological Solution Specialist



Anti-Influenza A H6N2
(A/chicken/Guangdong/C273/2011)
Hemagglutinin / HA1 polyclonal antibody at
1:1000 dilution.
Sample: Influenza A H6N2
(A/chicken/Guangdong/C273/2011)
Hemagglutinin / HA1 Recombinant Protein
Lane A: 50ng
Lane B: 10ng

Secondary
Goat Anti- Rabbit IgG H&L (Dylight 800) at
1/10000 dilution.

Developed using the Odyssey technique.
Performed under reducing conditions.