

# SARS-CoV-2 (2019-nCoV) Nucleocapsid Antibody, Rabbit Mab



Sino Biological  
Biological Solution Specialist

Catalog Number: 40588-R0002

GENERAL INFORMATION	
<b>Immunogen:</b>	Recombinant SARS-CoV-2 (2019-nCoV) Nucleocapsid Protein (Catalog#40588-V08B)
<b>Preparation</b>	This product is a recombinant monoclonal antibody expressed from HEK293 cells.
<b>Ig Type:</b>	Rabbit IgG
<b>Clone ID:</b>	0002
<b>Specificity</b>	2019-nCoV Coronavirus Nucleocapsid <b>Has cross-reactivity in ELISA and WB with</b> SARS-CoV Nucleocapsid Protein (His Tag) (Cat# 40143-V08B) <b>No cross-reactivity in ELISA with</b> MERS-CoV Nucleocapsid Protein (His Tag) (Cat# 40068-V08B) HCoV-229E Nucleoprotein protein (40640-V07E) HCoV-NL63 Nucleoprotein protein (40641-V07E) HCoV-HKU1(isolate N5) Nucleoprotein protein (40642-V07E) HCoV-OC43 Nucleoprotein (40643-V07E)
<b>Formulation:</b>	0.2 µm filtered solution in PBS
<b>Storage:</b>	This antibody can be stored at 2°C-8°C for one month without detectable loss of activity. Antibody products are stable for twelve months from date of receipt when stored at -20°C to -80°C. Preservative-Free.
APPLICATIONS	
<b>Applications:</b>	WB,ELISA,ELISA(Cap)
	IHC, FCM, IF, IP et al. applications haven't been validated. (Antibody's applications haven't been validated with corresponding virus positive samples. Optimal concentrations/dilutions should be determined by the end user.)
RECOMMENDED CONCENTRATION	
<b>WB</b>	WB: 1:1000-1:5000
<b>ELISA</b>	ELISA: 1:5000-1:10000
<b>ELISA(Cap)</b>	ELISA(Cap): 1:250-1:2000 In a sandwich ELISA, Cat# 40588-R0002 can be used as capture antibody when paired with Cat# 40588-R0006-1

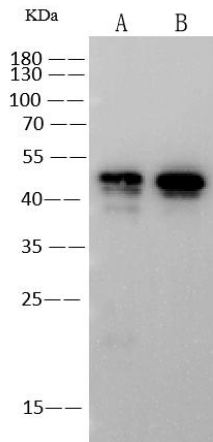
**Please Note: Optimal concentrations/dilutions should be determined by the end user.**

# SARS-CoV-2 (2019-nCoV) Nucleocapsid Antibody, Rabbit Mab



Sino Biological  
Biological Solution Specialist

Catalog Number: 40588-R0002



Anti-SARS-NP rabbit monoclonal antibody at 1:1000 dilution.

Lane A: SARS-CoV NP Protein (Cat#40143-V08B) (10ng)

Lane B: SARS-CoV-2 (2019-nCoV) NP Protein (Cat#40588-V08H) (10ng)

Secondary

Goat Anti-Rabbit IgG (H+L)/HRP at 1/10000 dilution.

Developed using the ECL technique.

Performed under reducing conditions.

Manufactured By Sino Biological Inc.

Tel: 215-583-7898 (US); +86-400-890-9989(Global) • <http://www.sinobiological.com>