

# SARS-CoV-2 (2019-nCoV) Nucleocapsid Antibody, Rabbit MAb



Sino Biological  
Biological Solution Specialist

Catalog Number: 40588-R001

GENERAL INFORMATION	
<b>Immunogen:</b>	Recombinant SARS-CoV-2 (2019-nCoV) Nucleocapsid Protein (Catalog#40588-V08B)
<b>Preparation</b>	This product is a recombinant monoclonal antibody expressed from HEK293 cells.
<b>Ig Type:</b>	Rabbit IgG
<b>Clone ID:</b>	001
<b>Specificity</b>	SARS-CoV-2 (2019-nCoV) Nucleocapsid Protein  Has cross-reactivity in WB and ELISA with SARS-CoV NP Protein (Cat#40143-V08B)  No cross-reactivity in ELISA with MERS-CoV NP Protein (Cat# 40068-V08B) HCoV-229E NP Protein (Cat# 40640-V07E) HCoV-NL63 NP Protein (Cat# 40641-V07E) HCoV-HKU1 NP Protein (Cat# 40642-V07E) HCoV-OC43 NP Protein (Cat# 40643-V07E)
<b>Formulation:</b>	0.2 µm filtered solution in PBS
<b>Storage:</b>	This antibody can be stored at 2°C-8°C for one month without detectable loss of activity. Antibody products are stable for twelve months from date of receipt when stored at -20°C to -80°C. Preservative-Free.
APPLICATIONS	
<b>Applications:</b>	WB,ELISA,ELISA(Det),IHC-P  (Antibody's applications have not been validated with corresponding viruses. Optimal concentrations/dilutions should be determined by the end user.)
RECOMMENDED CONCENTRATION	
<b>WB</b>	WB: 1:1000-1:10000
<b>ELISA</b>	ELISA: 1:5000-1:10000
<b>IHC-P</b>	IHC-P: 1:100-1:500
<b>ELISA(Det)</b>	ELISA(Det): 1:1000-1:10000 In a sandwich ELISA, Cat# 40588-R001 can be used as detection antibody when paired with Cat# 40143-MM05, Cat# 40588-MM123, Cat# 40143-R040, Cat# 40143-R004.

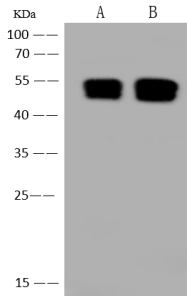
**Please Note: Optimal concentrations/dilutions should be determined by the end user.**

# SARS-CoV-2 (2019-nCoV) Nucleocapsid Antibody, Rabbit MAb



Sino Biological  
Biological Solution Specialist

Catalog Number: 40588-R001

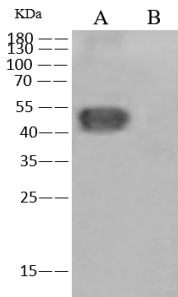


Anti-SARS-CoV-2 (2019-nCoV) Nucleocapsid rabbit monoclonal antibody at 1:10000 dilution.

Lane A: SARS-CoV Nucleoprotein / NP Protein (Cat#40143-V08B) (10ng)  
Lane B: SARS-CoV-2 (2019-nCoV) Nucleocapsid-His recombinant Protein (Cat#40588-V08B) (10ng)

Secondary  
Goat Anti-Rabbit IgG (H+L)/HRP at 1/10000 dilution

Developed using the ECL technique.  
Performed under reducing conditions.



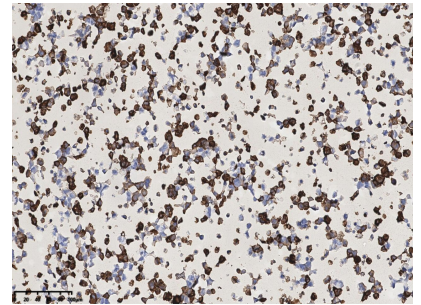
Anti-SARS-CoV-2 (2019-nCoV) Nucleocapsid rabbit monoclonal antibody at 1:5000 dilution.

Lane A: SARS-CoV-2 Nucleocapsid overexpressed HEK293 Whole Cell Lysate  
Lane B: HEK293 Whole Cell Lysate

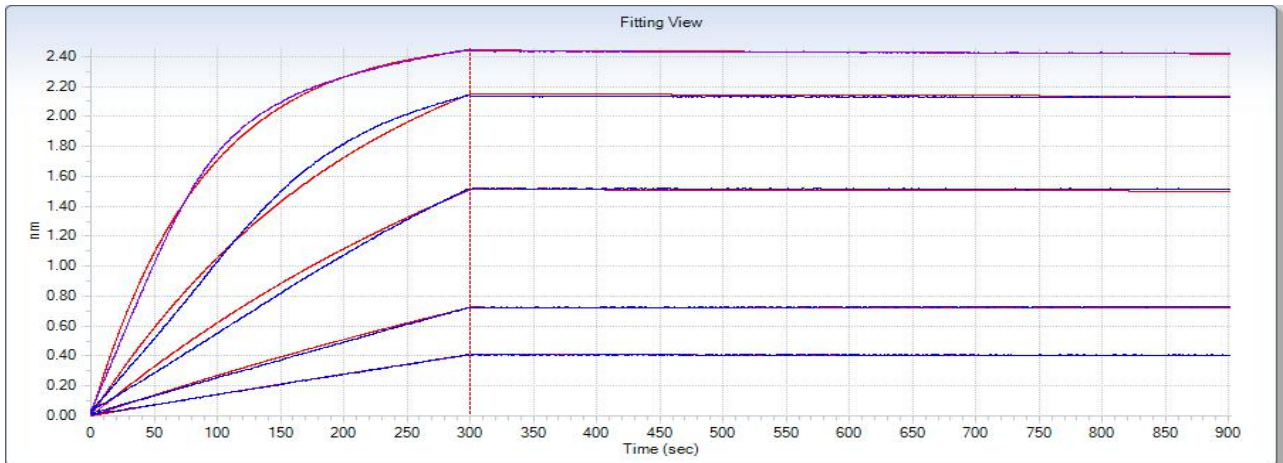
Lysates/proteins at 10 µg per lane.

Secondary  
Goat Anti-Rabbit IgG (H+L)/HRP at 1/10000 dilution

Developed using the ECL technique.  
Performed under reducing conditions.



Immunofluorescence analysis of Nucleocapsid overexpressed HEK293 Cells were stained with purified anti-SARS-CoV-2 Nucleocapsid Rabbit MAb, then a HRP-conjugated second step antibody.



Loaded SARS-CoV-2 (2019-nCoV) Nucleocapsid-His recombinant Protein, Biotinylated (Cat. No. 40588-V08B-B) on SA Biosensor, can bind SARS-CoV-2 (2019-nCoV) Nucleocapsid Antibody, Rabbit MAb (Cat. No. 40588-R001) with an affinity constant of 0.04 nM as determined by Octet RED System.

Manufactured By Sino Biological Inc.

Tel: 215-583-7898 (US); +86-400-890-9989 (Global) • <http://www.sinobiological.com>