

# SARS-CoV-2 (2019-nCoV) Nucleocapsid Antibody, Rabbit MAb



Sino Biological  
Biological Solution Specialist

Catalog Number: 40588-R704

## GENERAL INFORMATION

<b>Immunogen:</b>	Recombinant SARS-CoV-2 (2019-nCoV) Nucleocapsid Protein (Catalog#40588-V08B)
<b>Preparation</b>	This product is a recombinant monoclonal antibody expressed from HEK293 cells.
<b>Ig Type:</b>	Rabbit IgG
<b>Clone ID:</b>	704
<b>Specificity</b>	SARS-CoV-2 (2019-nCoV) Nucleocapsid Protein
	<b>Has cross-reactivity in ELISA and WB with</b> SARS-CoV-2 Nucleocapsid Protein (Cat# 40588-V07E)
	<b>No cross-reactivity in ELISA and WB with</b> SARS-CoV-2 Nucleocapsid CTD Protein (Cat# 40588-V07E5) SARS-CoV-2 Nucleocapsid (aa 248-407) Protein (Cat# 40588-V07E6) SARS-CoV-2 Nucleocapsid NTD Protein (Cat# 40588-V07E10)
<b>Formulation:</b>	0.2 µm filtered solution in PBS
<b>Storage:</b>	This antibody can be stored at 2°C-8°C for one month without detectable loss of activity. Antibody products are stable for twelve months from date of receipt when stored at -20°C to -80°C. Preservative-Free.

## APPLICATIONS

<b>Applications:</b>	WB,ELISA,FCM,IHC-P,IP,ELISA(Det)
	(Antibody's applications have not been validated with corresponding viruses. Optimal concentrations/dilutions should be determined by the end user.)

## RECOMMENDED CONCENTRATION

<b>Western Blot</b>	WB: 1:1000-1:10000
<b>ELISA</b>	ELISA: 1:5000-1:10000
<b>FCM</b>	FCM: 1:25-1:100
<b>IHC-P</b>	IHC-P: 1:200-1:1000
<b>IP</b>	IP:1-5µL/mg of lysate
<b>ELISA(Det)</b>	ELISA(Det): 1:1000-1:10000 In a sandwich ELISA, Cat# 40588-R704 can be used as detection antibody when paired with Cat# 40588-MM137 + 40143-MM05.

**Please Note: Optimal concentrations/dilutions should be determined by the end user.**

Manufactured By Sino Biological Inc.

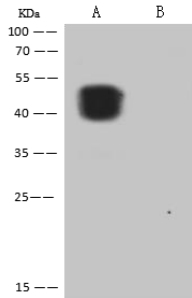
Tel: 215-583-7898 (US); +86-400-890-9989(Global) ● <http://www.sinobiological.com>

# SARS-CoV-2 (2019-nCoV) Nucleocapsid Antibody, Rabbit MAb



Sino Biological  
Biological Solution Specialist

Catalog Number: 40588-R704



### Anti-SARS-CoV-2 (2019-nCoV) Nucleocapsid rabbit monoclonal antibody at 1:5000 dilution.

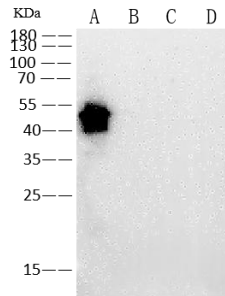
Lane A: SARS-CoV-2 Nucleocapsid overexpressed HEK293 Whole Cell Lysate  
Lane B: HEK293 Whole Cell Lysate

Lysates/proteins at 30 µg per lane.

#### Secondary

Goat Anti-Rabbit IgG (H+L)/HRP at 1/10000 dilution

Developed using the ECL technique. Performed under reducing conditions.



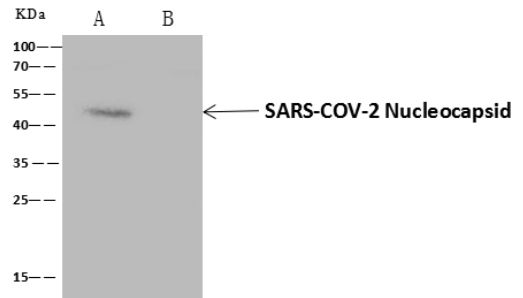
### Anti-SARS-CoV-2 Nucleocapsid rabbit monoclonal antibody at 1:1000 dilution.

Lane A: SARS-CoV-2 Nucleocapsid-His Recombinant Protein(Cat: 40588-V07E) (10ng)  
Lane B: SARS-CoV-2 Nucleocapsid CTD Protein(Cat: 40588-V07E5) (10ng)  
Lane C: SARS-CoV-2 Nucleocapsid (aa 248-407) Protein(Cat: 40588-V07E6) (10ng)  
Lane D: SARS-CoV-2 Nucleocapsid NTD Protein(Cat: 40588-V07E10) (10ng)

#### Secondary

Goat Anti-Rabbit IgG (H+L)/HRP at 1/10000 dilution

Developed using the ECL technique. Performed under reducing conditions. Performed under reducing conditions.



### SARS-CoV-2 Nucleocapsid was immunoprecipitated using:

Lane A: 0.5 mg SARS-CoV-2 Nucleocapsid overexpressed HEK293 Whole Cell Lysate  
Lane B: 0.5 mg HEK293 Whole Cell Lysate

4 µL anti- SARS-CoV-2 Nucleocapsid rabbit polyclonal antibody and 60 µg of Immunomagnetic beads Protein A/G.

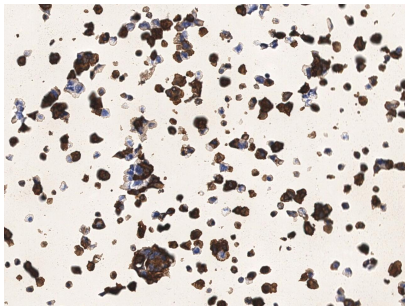
#### Primary antibody:

Anti- SARS-CoV-2 Nucleocapsid rabbit polyclonal antibody, at 1:100 dilution

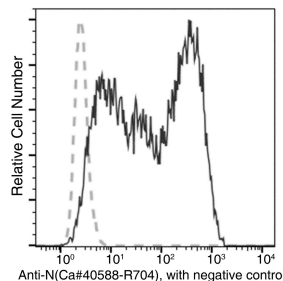
#### Secondary antibody:

Clean-Blot IP Detection Reagent (HRP) at 1:1000 dilution

Developed using the ECL technique. Performed under reducing conditions.



Immunocytochemistry analysis of SARS-CoV-2 Nucleocapsid overexpressed HEK293 Cells were stained with purified anti-SARS-CoV-2 Nucleocapsid Rabbit Mab, then a HRP-conjugated second step antibody.



Flow cytometric analysis of SARS-CoV-2 Nucleocapsid overexpressed HEK293 Cells were stained with purified anti-SARS-CoV-2 Nucleocapsid Rabbit Mab, then a FITC-conjugated second step antibody. The fluorescence histograms were derived from gated events with the forward and side light-scatter characteristics of intact cells.

Manufactured By Sino Biological Inc.

Tel: 215-583-7898 (US); +86-400-890-9989(Global) • <http://www.sinobiological.com>