

SARS-CoV-2 / 2019-nCoV Spike Antibody, Rabbit PAb, Antigen Affinity Purified



Sino Biological
Biological Solution Specialist

Catalog Number: 40591-T62

GENERAL INFORMATION	
Immunogen:	Recombinant SARS-CoV-2 (2019-nCoV) Spike S-His Protein (Catalog#40591-V08H)
Preparation	Produced in rabbits immunized with purified, recombinant SARS-CoV-2 (2019-nCoV) Spike S1-His Recombinant Protein (HPLC-verified) (Catalog#40591-V08H; YP_009724390.1; Val16-Arg685). The specific IgG was purified by SARS-CoV-2 / 2019-nCoV Spike affinity chromatography.
Ig Type:	Rabbit IgG
Specificity:	SARS-CoV-2 (2019-nCoV) Spike S-His Protein (Catalog#40591-V08H) Has cross-reactivity in ELISA and WB with SARS-CoV-2 (2019-nCoV) Spike RBD-mFc Protein (Catalog#40592-V05H) SARS-CoV Spike S1-His Protein (Catalog#40150-V08B1) SARS-CoV Spike RBD-His Protein (Catalog#40150-V08B2)
Formulation:	0.2 µm filtered solution in PBS
Storage:	This antibody can be stored at 2°C-8°C for one month without detectable loss of activity. Antibody products are stable for twelve months from date of receipt when stored at -20°C to -80°C. Preservative-Free.
APPLICATIONS	
Applications:	WB,ELISA IHC, FCM, IF, IP et al. applications haven't been validated. (Antibody's applications haven't been validated with corresponding virus positive samples. Optimal concentrations/dilutions should be determined by the end user.)
RECOMMENDED CONCENTRATION	
Western Blot	WB: 1:1000-1:5000
ELISA	ELISA: 1:5000-1:10000

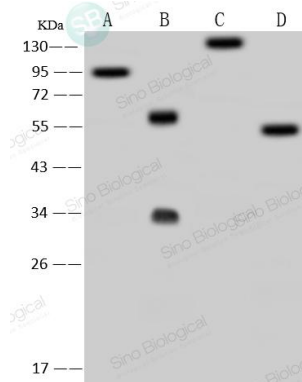
Please Note: Optimal concentrations/dilutions should be determined by the end user.

SARS-CoV-2 / 2019-nCoV Spike Antibody, Rabbit PAb, Antigen Affinity Purified



Sino Biological
Biological Solution Specialist

Catalog Number: 40591-T62



Anti-SARS-S1 rabbit polyclonal antibody at 1:2000 dilution.

Lane A: SARS-CoV Spike S1 (Cat# 40150-V08B1) (5ng)
Lane B: SARS-CoV Spike RBD (Cat# 40150-V08B2) (5ng)
Lane C: SARS-CoV-2 (2019-nCoV) Spike S1 (Cat# 40591-V08H) (5ng)
Lane D: SARS-CoV-2 (2019-nCoV) Spike RBD (Cat# 40592-V05H) (5ng)

Secondary

Goat Anti-Rabbit IgG (H+L)/HRP at 1/10000 dilution.

Developed using the ECL technique.
Performed under reducing conditions.

Manufactured By Sino Biological Inc.

Tel: 215-583-7898 (US); +86-400-890-9989(Global) ● <http://www.sinobiological.com>