

SARS-CoV-2 (2019-nCoV) Spike Non-Neutralizing Antibody, Mouse MAb



Sino Biological
Biological Solution Specialist

Catalog Number: 40592-MM55

GENERAL INFORMATION

Immunogen:	Recombinant SARS-CoV-2 (2019-nCoV) Spike RBD-mFc Protein (Catalog#40592-V05H)
Preparation	This antibody was produced from a hybridoma resulting from the fusion of a mouse myeloma with B cells obtained from a mouse immunized with purified, Recombinant SARS-CoV-2 (2019-nCoV) Spike RBD-mFc Protein (Catalog#40592-V05H; YP_009724390.1; Arg319-Phe541). The IgG fraction of the cell culture supernatant was purified by Protein A affinity chromatography.
Ig Type:	Mouse IgG1
Clone ID:	55
Specificity	SARS-CoV-2 (2019-nCoV) Spike Protein Has cross-reactivity in ELISA with SARS-CoV-2 (2019-nCoV) Spike S1-His Protein (Catalog#40591-V08B1) SARS-CoV Spike S1-His Protein (Catalog#40150-V08B1) No cross-reactivity in ELISA with MERS-CoV Spike S1 Protein (Cat# 40069-V08B1) HCoV-HKU1 (isolate N5) Spike S1 Protein (Cat# 40602-V08H) HCoV-HKU1 (isolate N1) Spike S1 Protein (Cat# 40021-V08H) HCoV-229E Spike S1 Protein (Cat# 40601-V08H) HCoV-NL63 Spike S1 Protein (Cat# 40600-V08H) HCoV-OC43 Spike S1+S2 ECD Protein (Cat# 40607-V08B)
Formulation:	0.2 µm filtered solution in PBS
Storage:	This antibody can be stored at 2°C-8°C for one month without detectable loss of activity. Antibody products are stable for twelve months from date of receipt when stored at -20°C to -80°C. Preservative-Free.

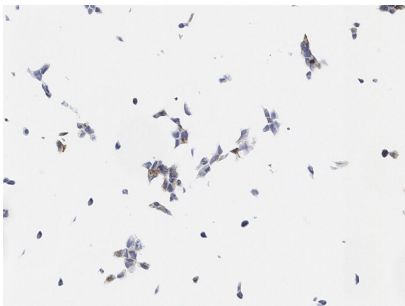
APPLICATIONS

Applications:	ELISA,IHC-P
	(Antibody's applications have not been validated with corresponding viruses. Optimal concentrations/dilutions should be determined by the end user.)

RECOMMENDED CONCENTRATION

ELISA	ELISA: 1:1000-1:2000
IHC-P	IHC-P: 1:20-1:100

Please Note: Optimal concentrations/dilutions should be determined by the end user.



Immunochemical analysis of SARS-CoV-2 Spike overexpressed HEK293 Cells were stained with purified anti-SARS-CoV-2 Spike Mouse Mab, then a HRP-conjugated second step antibody.

Manufactured By Sino Biological Inc.

Tel: 215-583-7898 (US); +86-400-890-9989(Global) ● <http://www.sinobiological.com>